

# IT 认证电子书



质 量 更 高 服 务 更 好

半年免费升级服务

<http://www.itrenzheng.com>

**Exam : 070-215**

**Title :** Installing, Configuring and  
Administering Microsoft  
Windows 2000 Server

**Version :** DEMO

**1.You are the administrator of your company's network.You are implementing a virtual private network (VPN). You want to use the VPN to allow remote users using the PPTP or L2TP protocol to access resources on your company's network. The Routing and Remote Access server that will provide VPN access is located behind a firewall. The firewall is configured to allow the GRE protocol. The firewall is also configured to pass ICMP, port 1701, port 1723 for the PPTP control service,TCP port 25 for SMTP, port 4500 for IPSec NAT-T, and port 80 for HTTP. These are the only ports enabled for TCP. After successfully configuring the Remote Access Server, your attempt to connect over the Internet by using an L2TP connection fails. However, you are able to connect successfully using PPTP. What action should you take at the firewall to allow access to the VPN server using an L2TP connection? (Each correct answer presents part of the solution. Choose two.)**

- A.Enable ports 137, 138, and 139 for NetBIOS.
- B.Enable UDP Port 53 for DNS.
- C.Enable UDP port 500 for IKE.
- D.Enable port 50 for IPSec ESP.
- E.Enable port 135 for the RPC port mapper service.

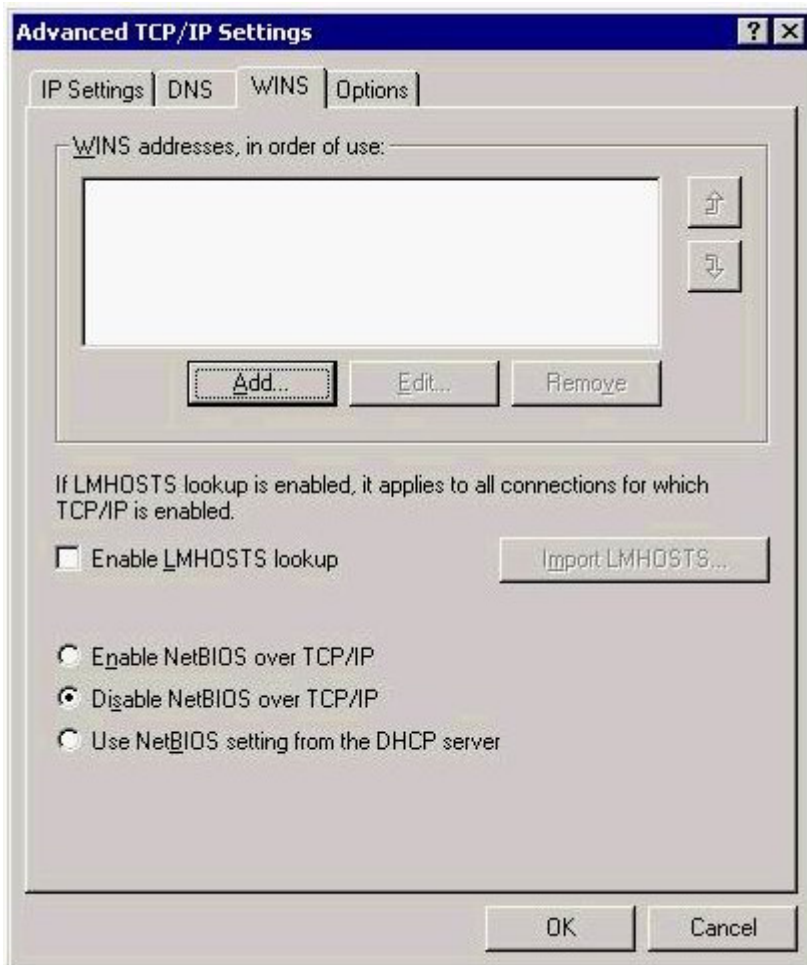
**Correct:C D**

**2.You are the administrator of your company's network.Your network contains Windows 2000 Server computers. All servers are configured as SNMP agents. Two management consoles named Monitor1 and Monitor2 are used to monitor all servers in the company. Monitor1 and Monitor2 run a network management software application that uses SNMP. You are responsible for monitoring a server named Server1. You monitor this server from Monitor1. Other administrators are able to monitor servers from Monitor2.You must ensure that only Monitor1 is able to monitor Server1 using the network management software application.What should you do?**

- A.Remove all community names from Server1.
- B.Remove all community names from Monitor2.
- C.Configure the SNMP service on Server1. Select the Only Accept SNMP Packets from These Hosts option. Add the host name for Monitor1.
- D.Configure the SNMP service on Monitor1. Select the Only Accept SNMP Packets from These Hosts option. Add the host name for Server1.

**Correct:C**

**3.You are the administrator of your company's network.Your network has 50 Windows 2000 Professional client computers and 10 Windows NT Workstation 4.0 client computers. The network uses TCP/IP as the only network protocol. One server on the network acts as a DNS server. The IP address of this server is 192.168.1.10. All of the client computers are configured to use this server for DNS service. Users of Windows NT Workstation computers cannot connect to a file server named FS\_1. However, users of Windows 2000 Professional computers can access FS\_1. FS\_1 has a statically assigned address of 192.168.1.11. The TCP/IP settings for FS\_1 are shown in the Advanced TCP/IP Settings Dialog Box. (Click the Exhibit button.) You want to allow the Windows NT Workstation 4.0 computers to connect to FS\_1.What should you do?**



A.Add a WINS address.

B.Select the Enable LMHOSTS lookup check box and import the Lmhosts file used by the Windows NT Workstation computers.

C.Select the Enable NetBIOS over TCP/IP option button. Select the Enable LMHOSTS lookup check box and import the Lmhosts file used by the Windows NT Workstation computers.

D.Select the Use NetBIOS setting from the DHCP server option button and select the Enable LMHOSTS lookup check box.

**Correct:C**

**4.You are the administrator of your company's network.The network consists of Windows 2000 Server computers, NetWare servers and Windows 2000 Professional client computers. All of the Windows 2000 Server and Windows 2000 Professional computers are members of a single domain. You want the client computers to be able to connect to resources on the NetWare servers with the least amount of administrative effort.What should you do?**

A.Install and configure Gateway Services for NetWare on a Windows 2000 Server computer.

B.Install and configure File and Print Services for NetWare on a Windows 2000 Server computer.

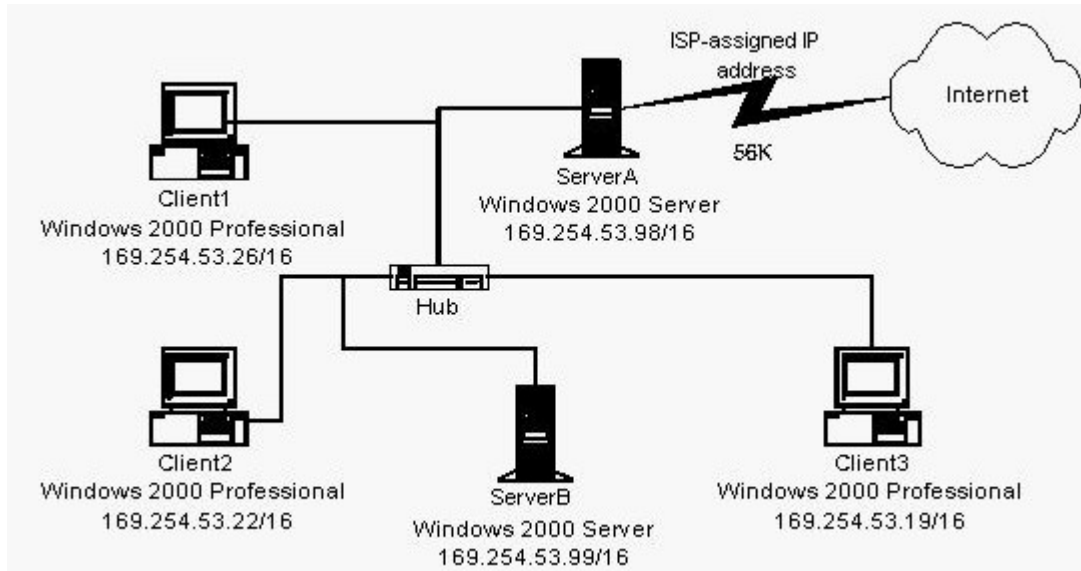
C.Install and configure Client Services for NetWare on a Windows 2000 Server computer.

D.Install and configure Client Services for NetWare on the Windows 2000 Professional computers.

**Correct:A**

**5.You are the network administrator of a Windows 2000 workgroup. The network is part of a small office that is configured as shown in the Network Diagram. (Click the Exhibit button.) There is no**

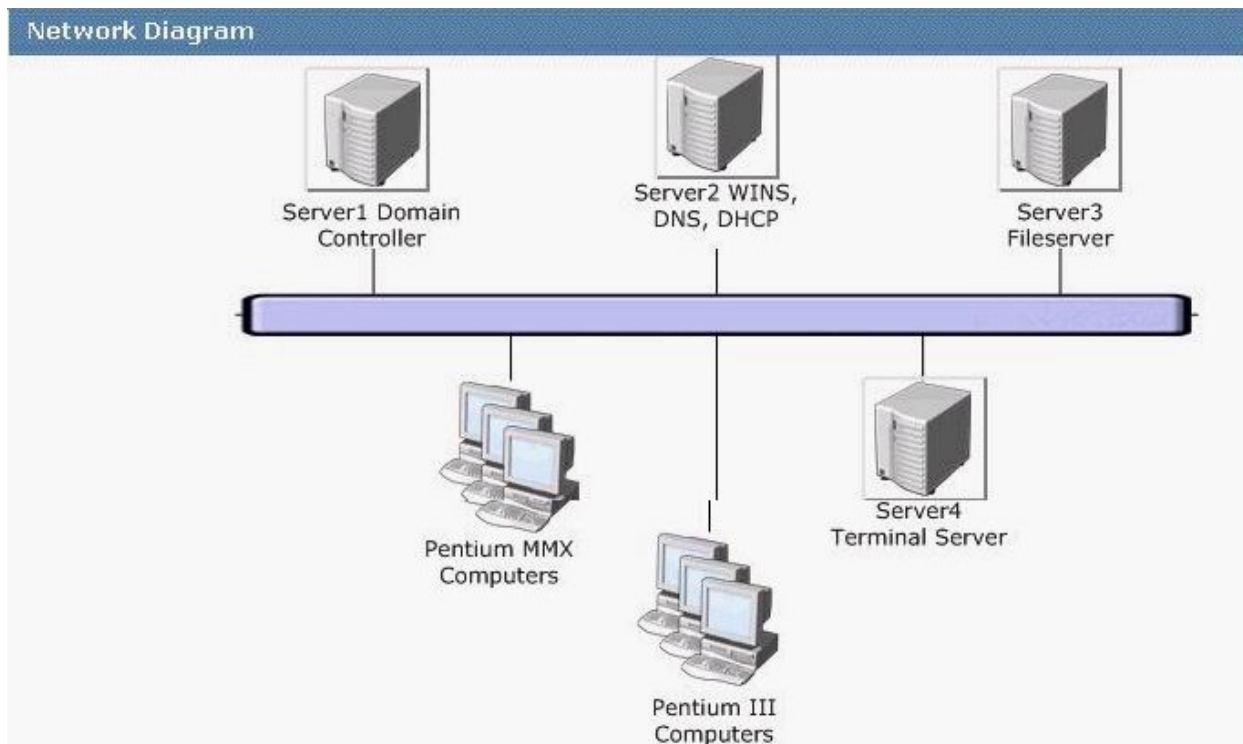
DHCP server on the network. All Windows 2000 Professional client computers use APIPA addresses. ServerB is configured to have a static IP address. However, no applications on ServerB require a static IP address. ServerA uses a dial-up connection to connect to the Internet. After you enable Internet Connection Sharing on ServerA you discover that ServerB cannot access the Internet. You want to ensure that all network computers can connect to ServerA and access the Internet. What should you do?



- A. On all of the computers, configure static IP addresses in the range of 192.168.0.2 to 192.168.255.255.
- B. On ServerB, configure static IP addresses in the range of 192.168.0.2 to 192.168.255.255.
- C. Configure ServerA with a static IP address of 169.254.53.98.
- D. Configure ServerB to obtain its IP address automatically.
- E. Configure ServerA to obtain its IP address automatically.
- F. On all of the computers, configure a subnet mask of 255.255.255.0.

**Correct: D**

6. You are the network administrator for your company's network. The domain and network configuration is a Windows 2000 network that is configured as shown in the Network Diagram. You plan to deploy Terminal Services to the Pentium MMX client computers. You install Terminal Services on Server4. You want to be able to manage user licenses and enable users to access Server4. What server should you install licensing services on? To answer, select the appropriate server in the Network Diagram.



**Correct:**

7.You are the network administrator for your company.You install the Routing and Remote Access service on a Windows 2000 Server computer on your network. Your network is not directly connected to the Internet and uses the private IP address range 172.16.30.0. You use a DHCP server to provide addresses to computers on your local subnet.When you use Routing and Remote Access to dial in to the server, your Windows 98 computer connects successfully, but you are unable to access any resources. When you try to ping servers by using their IP addresses, you receive the following message: "Request timed out." When you run the winipcfg command, it shows that your dial-up connection has been given the IP address 0.0.0.0.You need to be able to access internal network resources through a dial-up connection.What should you do?

- A.Configure the remote access server to act as a DHCP Relay Agent.
- B.Configure the remote access server with the address of a DHCP server.
- C.Authorize the remote access server to receive multiple addresses from a DHCP server.
- D.Configure an address pool for the Routing and Remote Access service that does not overlap with the DHCP server.

**Correct:D**

8.Your company has a main office and 50 branch offices. The main office has a private network with 1,000 computers. Each branch office has a private network with between 10 and 20 computers and a 56-Kbps connection to the Internet.The company plans to use the Network Address Translation (NAT) feature of Routing and Remote Access to provide each office with access to the Internet. When you test this configuration, you discover that connections cannot be made to sites by using fully qualified domain names. However, connections can be made to these sites by using their IP addresses.You want to be able to make connections by using fully qualified domain names. What should you do?

- A.Configure the computers on each of the branch office networks with the address of a WINS server.
- B.Configure the computers on each of the branch office networks with the address of a DNS server on the

Internet.

C.Configure a filter on the NAT servers to pass DNS packets.

D.Create a host file on each of the NAT servers.

**Correct:B**

**9.You are the administrator of your company's network.Your network contains a mail hosting server named Server1 and a domain controller named Server2. Server2 runs the DNS service for the network. Both servers are Windows 2000 Server computers. Both servers use TCP/IP as the only network protocol and have statically configured IP addresses. You take Server2 offline for maintenance. After Server2 is brought back online, some client computers cannot connect to Server1. When you examine the DNS entries on Server2, you find that there is no entry for Server1. You want Server1 to re-create its dynamic DNS entries with the least disruption to users. What should you do?**

A.From a command prompt on Server1, run the nbtstat -RR command.

B.Restart the DNS client service on Server1.

C.From a command prompt on Server1, run the ipconfig /registerdns command.

D.From Network and Dial-up Connections on Server1, disable and then enable the local area connection.

**Correct:C**

**10.You are the administrator of a Microsoft Windows 2000 domain. You plan to deploy 10 new computers as Windows 2000 member servers. The new computers were purchased from different vendors and use different hardware abstraction layers (HALs). You plan to install the Windows 2000 Server computer operating system by using an automated process. You want to perform the installation with minimal manual configuration and intervention. What should you do? To answer, drag the appropriate Action Choice into the correct Action Step in the correct order.**

Action Choices	Action Steps
Create a CD-based image on a RIS server.	Step One
Create an RIPrep image of a configured source computer on a RIS server.	
Run the Setup Manager utility to create an answer file and a uniqueness database file.	Step Two
Run the Sysprep.exe utility to prepare a disk image of a configured source computer.	
Use third party software to duplicate the image to a CD-ROM.	
Use the Winnt.exe utility and specify the unattended installation and udf switches.	
Use the Windows 2000 Installation CD-ROM and the Winnt.sif answer file on a floppy disk .	
Start each installation using a boot disk and specify the RIS server.	
Start each installation using a Windows 2000 Installation CD-ROM to start the server.	

**Correct:**

**Green choice3---->Yellow Choice1**

**Green choice6---->Yellow Choice2**



**11.You are the network administrator for your company. Your company has 50 offices. The employees in these offices have limited knowledge of Windows 2000. Each office has a network of between five and 20 client computers. The office networks are connected to each other. The company is buying 50 identical computers to run Windows 2000 Server in these offices. The servers must be installed to the company's standard configuration. You use Setup Manager to create a network shared distribution folder and an Unattend.txt file that specifies the company's standard configuration. You want to automate the installation process as much as possible, in the least possible amount of time. What should you do?**

- A.Run Makebt32.exe to create four installation startup disks and add the Unattend.txt file to the first disk. Instruct an employee at each office to start the installation by using these disks.
- B.Create a Microsoft MS-DOS network boot disk that makes a connection to the network shared distribution folder and runs the winnt command with the /s and /u switches. Instruct an employee at each office to start the installation by using this disk.
- C.Create a floppy disk that contains only the Unattend.txt file. Instruct an employee at each office to start the installation by using the Windows 2000 Server compact disc, with the floppy disk inserted.
- D.Create a Windows 2000 folder on a hard disk. Copy the Windows 2000 Server compact disc to the folder. Add the Unattend.txt file to the folder. Copy the folder to a writable CD. Instruct an employee at each office to start the installation by using this CD.

**Correct:B**

**12.You are the network administrator for your company. You are installing Windows 2000 Server on a new computer by using the Windows 2000 Server compact disc. The computer has five 18-GB hard disks: Disk0, Disk1, Disk2, Disk3, and Disk4. The disks do not have any partitions defined. You want to use as much space on Disk0 as possible for the partition on which Windows 2000 Server is installed. You want the disk on which you install Windows 2000 Server to be fault tolerant. You also want as much disk space as possible across the other disks to be available for data storage and to be fault tolerant. What should you do? (Each correct answer presents part of the solution. Choose three.)**

- A.Install Windows 2000 Server on a 4-GB NTFS partition on Disk 0. Configure the five disks as dynamic disks.
- B.Install Windows 2000 Server on a 18-GB NTFS partition on Disk 0. Configure the five disks as dynamic disks.
- C.Create a RAID-5 volume using Disk2, Disk3, and Disk4.
- D.Create a striped volume using Disk2, Disk3, and Disk4.
- E.Create a RAID-5 volume using all disks.
- F.Create a striped volume using all disks.
- G.Select the volume on Disk0 and add a mirror using Disk1.

**Correct:B C G**

**13.You are the network administrator for your company. You are planning to upgrade Windows NT Server 4.0 computers to Windows 2000 Server. You want to perform the upgrades by means of a distribution folder. You want to install a custom application as part of the upgrade. You need to include the necessary commands so that the custom application is automatically installed as part of the upgrade process. What should you do?**

- A.Create a command file named Cmdlines.txt to install the application. Copy the Cmdlines.txt file to the subfolder named \$OEM\$ under the i386 folder.



B.Create a command file named Unattend.txt to install the application. Copy the Unattend.txt file to the subfolder \$OEM\$\textmode under the i386 folder.

C.Create a subfolder named \$OEM\$\C\Applications under the i386 folder. Copy the application files to that subfolder.

D.Create a second network shared folder named \$OEM\$. Copy the application to that share point.

**Correct:C**

**14.You are the network administrator for your company. The network includes a Microsoft Windows NT Server 4.0 member server computer that has a non-Plug and Play ISA network adapter. You want to upgrade this computer to Microsoft Windows 2000 Server. You also want to ensure that you maintain the current device configuration during the upgrade. What should you do? (Each correct answer presents part of the solution. Choose two.)**

A.Install the latest driver for the network adapter.

B.Disable the network adapter.

C.Start the upgrade process by using Winnt32.exe.

D.Start the upgrade process by booting from the Windows 2000 Server compact disc.

E.Configure BIOS to reserve the IRQ currently in use by the network adapter.

F.Press F6 at the beginning of the text mode setup to specify an additional driver.

**Correct:C D**

**15.You are the network administrator for your company. You are configuring a new Windows 2000 Server computer. The server contains five physical disks. You plan to implement a Windows 2000 software RAID.You need to ensure that all disk volumes are fault tolerant. You want to minimize disk access time and maximize available storage.What should you do?**

A.Configure the system volume as a simple volume and the other volumes as striped volumes.

B.Configure the system volume as a simple volume and the other volumes as RAID-5 volumes.

C.Configure the system volume as a mirrored volume and the other volumes as mirrored volumes.

D.Configure the system volume as a mirrored volume and the other volumes as RAID-5 volumes.

**Correct:C**

**16.You are the administrator of a Windows 2000 Server computer. Your Windows 2000 Server computer contains data files that users of client computers access throughout the day. You install a new driver for the tape device on the computer. After restarting the computer, you log on as Administrator. Shortly after you log on, you receive the following STOP error: "IRQL\_NOT\_LESS\_OR\_EQUAL." You want the server to start properly. What should you do?**

A.Restart the server by using a Windows 2000 boot disk.

B.Restart the computer by using the Last Known Good Configuration.

C.Perform an emergency repair and select Fast Repair. Restart the computer.

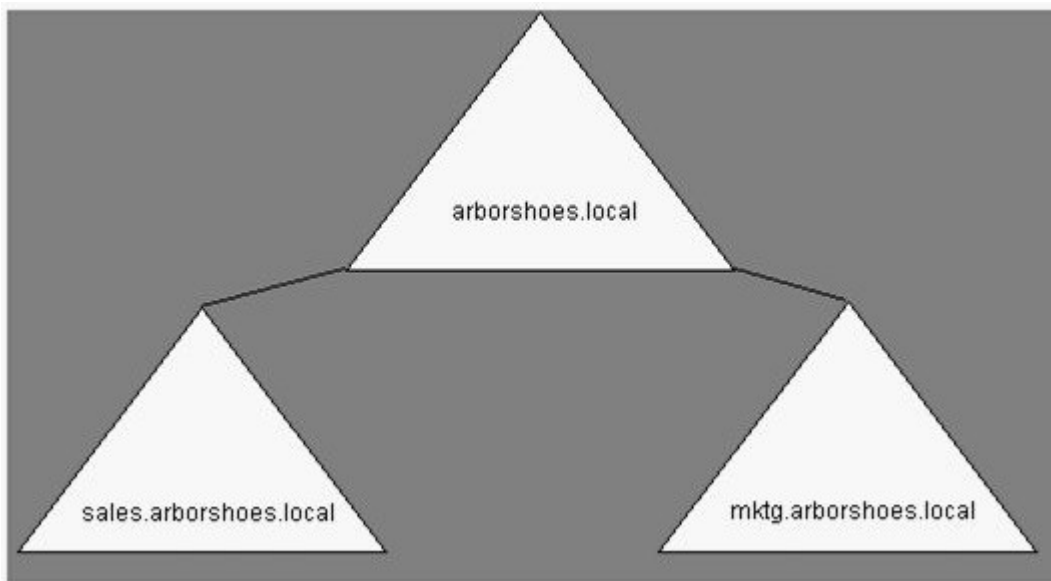
D.Restart the computer in safe mode. Remove the driver. Restart the computer.

E.Start the computer by using the Windows 2000 Server compact disc. Perform an emergency repair. Reinstall the old driver for the tape device.

**Correct:D**

**17.You are the administrator of a Windows 2000 Server network at Arbor Shoes. Your Windows 2000 forest contains three domains as shown in the network diagram. (Click the Exhibit button.) Each domain contains two domain controllers named DC1 and DC2. The Arbor Shoes Active Directory structure contains two sites named Denver and Toronto. The DC1 domain controllers for each domain reside at the company's main office site in Denver. The DC2 domain controllers for**

each domain reside at the company's branch office site in Toronto. You want to ensure that you have a backup copy of the entire Active Directory structure at the Denver site. What should you do?



- A. Back up the system state data for DC1.arborshoes.local.
- B. Back up the system state data for DC2.arborshoes.local.
- C. Back up the system state data for DC1.sales.arborshoes.local and DC1.mktg.arborshoes.local.
- D. Back up the system state data for DC2.sales.arborshoes.local and DC2.mktg.arborshoes.local.
- E. Back up the system state data for each DC1 domain controller.
- F. Back up the system state data for each DC2 domain controller.

**Correct:A**

**18. You are the administrator of your company's network. Your network includes a Windows 2000 Server computer that runs a client/server application. This server intermittently has slow response time. During these occurrences, you notice that the computer experiences high processor utilization. You suspect the application is causing the high processor utilization. You want to be notified when the application on the server reaches a high processor utilization threshold. What should you do?**

- A. Use Network Monitor. Configure the Capture Trigger option to Trigger on Pattern Match. In the Pattern field, type the name of the application.
- B. Create a chart in System Monitor. Monitor the % Processor Time counter for the process that corresponds to the application.
- C. Configure the SNMP Service properties on the computer. Add a trap destination and specify the host name of your computer. Select the Send authentication trap check box.
- D. Use System Monitor to create a new alert setting. Add the % Processor Time counter for the process that corresponds to the application on the server. Select the Send a network message to check box and specify the NetBIOS name of your computer.

**Correct:D**

**19. You are the server administrator for your company. You install and run a third-party accounting application named Accounts on your Windows 2000 Server computer. After several days, the response from the application becomes very slow. You end the application. However, you see that the CPU usage on the server is still near 100 percent. Task Manager shows no other applications**

running. You then examine the Processes page in Task Manager and confirm that several of the child processes of the Accounts application are still running. You want to find out which child process is taking up the largest percentage of the server CPU . What should you do?

- A. Use the Performance page in Task Manager. Select the View menu to Show Kernel Times.
- B. Use the Performance page in Task Manager. Select the View menu to show CPU History.
- C. Use the Processes page in Task Manager. Select the Show processes for all users option.
- D. Use the Processes page in Task Manager. Sort on the CPU column.

**Correct: D**

**20. You are the administrator of a Windows 2000 Server computer. The server has a single hard disk with a single NTFS partition. You use a third-party tool to add a new partition to the disk. When you restart the server, you receive the following error message: "Windows 2000 could not start because the following file is missing or corrupt: \system32\ntoskrnl.exe. Please re-install a copy of the above file." What should you do to resolve the problem?**

- A. Start the computer by using the Recovery Console. Run System File Checker.
- B. Start the computer by using the Recovery Console. Modify the Partition parameter in the operating system path in C:\Boot.ini.
- C. Start the emergency repair process. Choose the option to repair system files.
- D. Start the computer in safe mode with command prompt. Modify the Partition parameter in the operating system path in C:\Boot.ini.

**Correct: B**