

# IT 认证电子书



质 量 更 高 服 务 更 好

半年免费升级服务

<http://www.itrenzheng.com>

**Exam : 156-315.77**

**Title : Check Point Certified  
Security Expert**

**Version : DEMO**

1. In the following cluster configuration; if you reboot sgldonon\_1 which device will be active when sgldonon\_1 is back up and running? Why?

- A. sgldonon\_1 because it the first configured object with the lowest IP.
- B. sgldonon\_2 because sgldonon\_1 has highest IP.
- C. sgldonon\_1, because it is up again, sgldonon\_2 took over during reboot.
- D. sgldonon\_2 because it has highest priority.

**Answer: D**

2. You find that Gateway fw2 can NOT be added to the cluster object.

What are possible reasons for that?

- 1) fw2 is a member in a VPN community.
- 2) ClusterXL software blade is not enabled on fw2.
- 3) fw2 is a DAIP Gateway.

- A. 2 or 3
- B. 1 or 2
- C. 1 or 3
- D. All

**Answer: C**

3. Review the Rule Base displayed.

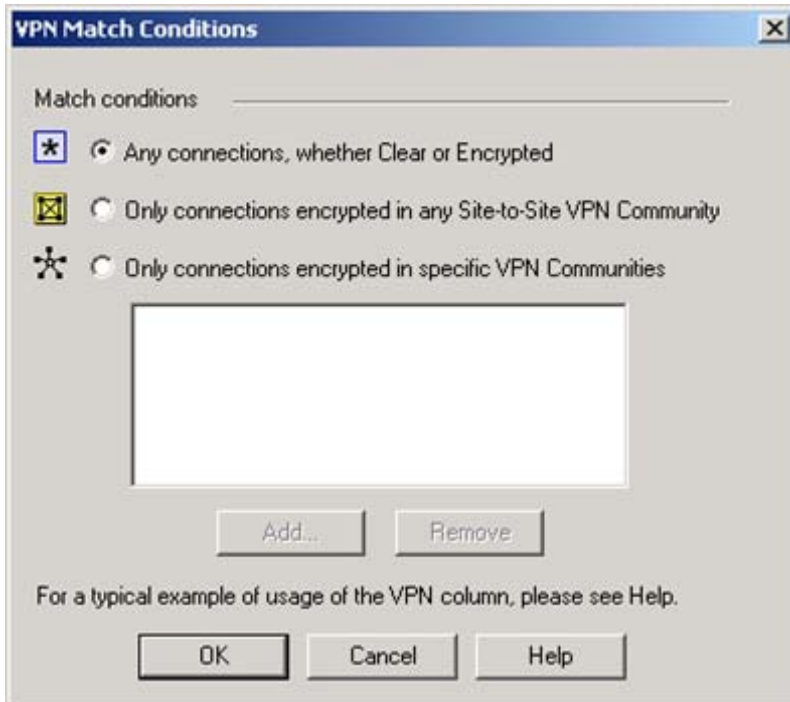
For which rules will the connection templates be generated in SecureXL?

- A. Rules 2 and 5
- B. Rules 2 through 5
- C. Rule 2 only
- D. All rules except Rule 3

**Answer: D**

4. You are trying to configure Directional VPN Rule Match in the Rule Base. But the Match column does not have the option to see the Directional Match. You see the following window. What must you enable to see the Directional Match?

Exhibit:



- A. directional\_match(true) in the objects\_5\_0.C file on Security Management Server
- B. VPN Directional Match on the Gateway object's VPN tab
- C. VPN Directional Match on the VPN advanced window, in Global Properties
- D. Advanced Routing on each Security Gateway

**Answer: C**

5.MultiCorp is running Smartcenter R71 on an IPSO platform and wants to upgrade to a new Appliance with R77. Which migration tool is recommended?

- A. Download Migration Tool R77 for IPSO and Splat/Linux from Check Point website.
- B. Use already installed Migration Tool.
- C. Use Migration Tool from CD/ISO
- D. Fetch Migration Tool R71 for IPSO and Migration Tool R77 for Splat/Linux from CheckPoint website

**Answer: A**

6.MegaCorp is running Smartcenter R70, some Gateways at R65 and some other Gateways with R60. Management wants to upgrade to the most comprehensive IPv6 support. What should the administrator do first?

- A. Upgrade Smartcenter to R77 first.
- B. Upgrade R60-Gateways to R65.
- C. Upgrade every unit directly to R77.
- D. Check the ReleaseNotes to verify that every step is supported.

**Answer: D**

7.MicroCorp experienced a security appliance failure. (LEDs of all NICs are off.) The age of the unit required that the RMA-unit be a different model. Will a revert to an existing snapshot bring the new unit up and running?

- A. There is no dynamic update at reboot.
- B. No. The revert will most probably not match to hard disk.
- C. Yes. Everything is dynamically updated at reboot.
- D. No. At installation the necessary hardware support is selected. The snapshot saves this state.

**Answer: D**

8.Which is the lowest Gateway version manageable by SmartCenter R77?

- A. R65
- B. S71
- C. R55
- D. R60A

**Answer: A**

9.Can you implement a complete IPv6 deployment without IPv4 addresses?

- A. No. SmartCenter cannot be accessed from everywhere on the Internet.
- B. Yes. Only one TCP stack (IPv6 or IPv4) can be used at the same time.
- C. Yes, There is no requirement for managing IPv4 addresses.
- D. No. IPv4 addresses are required for management.

**Answer: C**

10.A ClusterXL configuration is limited to \_\_\_\_ members.

- A. There is no limit.
- B. 16
- C. 6
- D. 2

**Answer: C**

11.Select the command set best used to verify proper failover function of a new ClusterXL configuration.

- A. reboot
- B. cphaprob -d failDevice -s problem -t 0 register / cphaprob -d failDevice unregister
- C. clusterXL\_admin down / clusterXL\_admin up
- D. cpstop/cpstart

**Answer: C**

12.You are troubleshooting a HTTP connection problem. You've started fw monitor -o http.pcap. When you open http.pcap with Wireshark there is only one line. What is the most likely reason?

- A. fw monitor was restricted to the wrong interface.
- B. Like SmartView Tracker only the first packet of a connection will be captured by fw monitor.
- C. By default only SYN packets are captured.
- D. Acceleration was turned on and therefore fw monitor sees only SYN.

**Answer: D**

13.Which two processes are responsible on handling Identity Awareness?

- A. pdp and lad

- B. pdp and pdp-11
- C. pep and lad
- D. pdp and pep

**Answer: D**

14.Which three of the following are ClusterXL member requirements? 1) same operating systems 2) same Check Point version 3) same appliance model 4) same policy

- A. 1, 3, and 4
- B. 1, 2, and 4
- C. 2, 3, and 4
- D. 1, 2, and 3

**Answer: B**

15.CORRECT TEXT

Fill in the blank. You can set Acceleration to ON or OFF using command syntax \_\_\_\_\_ .

**Answer: fwaccel off/on**

16.You run cphaprob -a if. When you review the output, you find the word DOWN. What does DOWN mean?

- A. The cluster link is down.
- B. The physical interface is administratively set to DOWN.
- C. The physical interface is down.
- D. CCP packets couldn't be sent to or didn't arrive from neighbor member.

**Answer: D**

17.Which three of the following components are required to get a SmartEvent up and running?

- 1) SmartEvent SIC
  - 2) SmartEvent Correlation Unit
  - 3) SmartEvent Server
  - 4) SmartEvent Analyzer
  - 5) SmartEvent Client
- A. 2, 3, and 5
- B. 1, 2, and 4
- C. 1, 2, and 3
- D. 3, 4, and 5

**Answer: A**

18.MegaCorp is using SmartCenter Server with several gateways. Their requirements result in a heavy log load. Would it be feasible to add the SmartEvent Correlation Unit and SmartEvent Server to their SmartCenter Server?

- A. No. SmartCenter SIC will interfere with the function of SmartEvent.
- B. No. If SmartCenter is already under stress, the use of a separate server for SmartEvent is recommended.
- C. No, SmartEvent and Smartcenter cannot be installed on the same machine at the same time.
- D. Yes. SmartEvent must be installed on your SmartCenter Server.

**Answer: B**

19.CORRECT TEXT

Fill in the blank. To verify that a VPN Tunnel is properly established, use the command \_\_\_\_\_

**Answer: vpn tunnelutil**

20.CORRECT TEXT

MultiCorp is located in Atlanta. It has a branch office in Europe, Asia, and Africa. Each location has its own AD controller for local user login. How many ADqueries have to be configured?

**Answer: 4**