

IT 认证电子书



质 量 更 高 服 务 更 好

半年免费升级服务

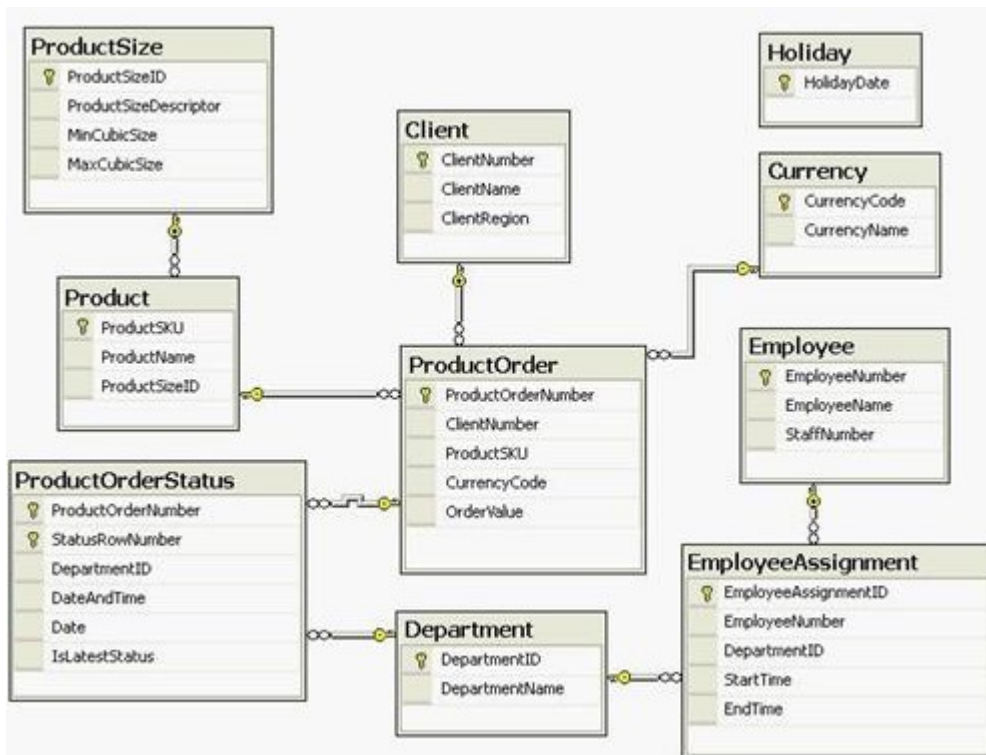
<http://www.itrenzheng.com>

Exam : **70-446**

Title : PRO:Design a Business
Intellig Infrastr Usi MS SQL
Serv 2005

Version : DEMO

1.BACKGROUND Fabrikam,Inc,is a manufacturing company that provides components for the engineering industry, fabrikam has a sister company named contoso,Ltd, Work order are processed by the following departments: The Production department handles request for components that are not in stock, The Warehouse department handles the storage and stock management of pre-manufactured components. The Warehouse department handles the packaging of stock in the warehouse or the production department. The Distribution department handles the delivery of orders to clients. The company uses a flexible resourcing structure where individual employees can be reassigned between department. Productivity is higher when specific groups of staff members are assigned to a particular department. **EXISTING ENVIRONMENT** Fabrikam uses a Microsoft SQL Server 2005 database named FabrikamSQLDB to control and route client requests as work order to the respective department. New Client and Product Order records can be added to the FabrikamSQLDB database throughout the day ,these records must be reflected correctly in any reports with zero latency. The FabrikamSQLDB schema is shown in the following exhibit.(Click the Case Study Exhibits button to view the FabrikamSQLDB schema.)



Correct:

2.You need to ensure the Client dimension is able to support new orders and new client records. Which setting should you configure?

- A.ROLAP storage
- B.Lazy aggregations
- C.Write Enabled property
- D.Unknown Member functionality

Correct:A

3.You need to meet the requirements of the accounts team. What should you do?

- A.Set the Dimension type to Currency.
- B.Set the Currency member name as a unique attribute.

- C.Hide non-leaf data within the Currency dimension key attribute.
- D.Disable the All member of the Currency dimension key attribute.

Correct:D

4.You need to make structural changes to the cube. You also need to ensure that appropriate aggregations are created after the changes are made. What should you do?

- A.Record a weeks user activity by using SQL Profiler. Apply structural changes. Replay the activity and then run the Usage Based Optimization Wizard.
- B.Apply structural changes. Run the Database Engine Tuning Advisor.
- C.Apply structural changes. Run the Usage Based Optimization Wizard.
- D.Record a weeks user activity by using SQL Profiler. Apply structural changes. Run the Database Engine Tuning Advisor.

Correct:A

5.You need to select appropriate processing methods for the EmployeeAssignment measure group and the Employee dimension. Which method should you choose?

- A.Run a Process Update against the Employee dimension. Run a Process Full against the EmployeeAssignment measure group.
- B.Run a Process Full against the EmployeeAssignment measure group. Run a Process Update against the Employee dimension.
- C.Run a Process Full against the Employee dimension. Run a Process Incremental against the EmployeeAssignment measure group.
- D.Run a Process Incremental against the EmployeeAssignment measure group. Run a Process Full against the Employee dimension.

Correct:A

6.You need to ensure that the new sales manager is able to view clients within only the North and South regions. What should you do?

- A.Add a Denied member set for the West clients to NorthRole.
- B.Add an Allowed member set for the South clients to NorthRole.
- C.Create a new role for the sales manager and add a Denied member set for the South clients.
- D.Create a new role for the sales manager and add an Allowed member set for the South clients. Remove the sales manager from SouthAndWestRole.

Correct:D

7.You need to meet the business requirements of the packaging department. What should you do?

- A.Add the ProductSize data table and the ProductSizeDescriptor column to the Product dimension. Set the order of the ProductSKU attribute to the ProductSizeDescriptor column.
- B.Add the ProductSize data table as a dimension and then add this dimension to the cube as a Referenced dimension. Set the order of the key attribute of the ProductSize dimension to the ProductSizeDescriptor column.
- C.Add the ProductSize data table and the ProductSizeDescriptor column to the Product dimension. Create a user-defined hierarchy that has ProductSKU as the top-level attribute and ProductSizeDescriptor as the bottom-level attribute.
- D.Add the ProductSize data table as a dimension and then add this dimension to the cube as a Referenced dimension. Create a user-defined hierarchy within the ProductSize dimension. Set the ProductSizeDescriptor attribute as the top-level attribute.

Correct:A

8.You need to ensure the Order Control team is able to track the number of orders that reach the production department. What should you do?

- A.Create a new Time dimension based on the Holiday table. Use derived columns for the month and the year.
- B.Create a Server Time dimension. Within this dimension, enable the time periods year, month, and date. Select the Additional Manufacturing calendar option.
- C.Create a new Time dimension based on the date values within the ProductOrderStatus table. Flag those days on which no orders were received as Holiday.
- D.Create a new Time dimension based on a data source view named query. Derive the data for this data source view from unique dates within the ProductOrderStatus table. Use a subquery to identify the holidays and derived columns for the month and the year.

Correct:D

9.You need to design a storage mode for the ProductOrderStatus measure group. What should you do?

- A.Use ROLAP for the Historical partition and MOLAP for the CurrentDay partition.
- B.Use MOLAP for the Historical partition and ROLAP for the CurrentDay partition.
- C.Use ROLAP for the Historical partition and Automatic MOLAP for the CurrentDay partition.
- D.Use HOLAP for the Historical partition and Low-latency MOLAP for the CurrentDay partition.

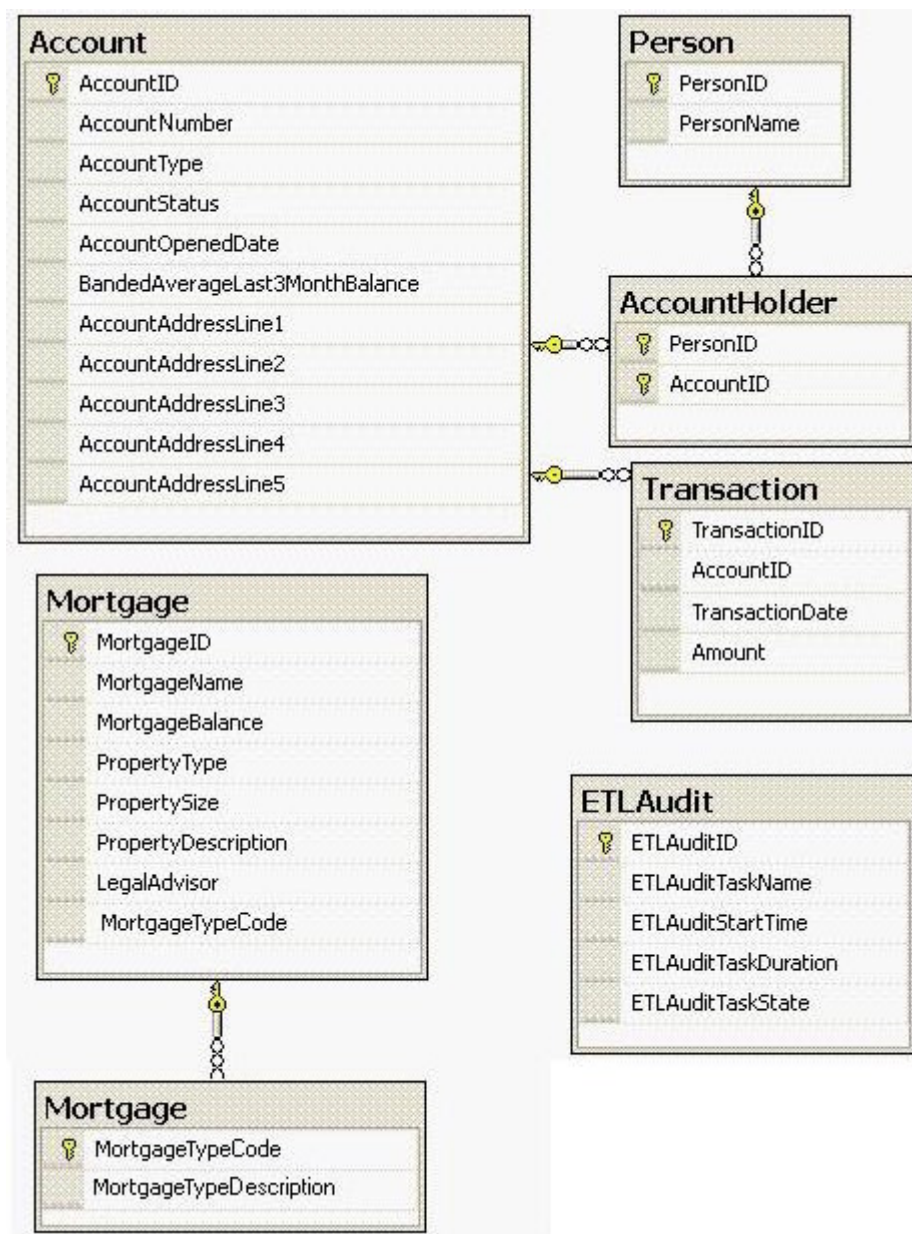
Correct:B

10.You need to maintain the partitions on the ProductOrderStatus measure group. What should you do?

- A.Create a Microsoft SQL Server 2005 Integration Services (SSIS) package that alters the partition queries and processes aggregated partitions every evening.
- B.Enable proactive caching on the partitions. Set the cache to update periodically with a latency of 24 hours.
- C.Set the rebuild interval of the partitions to 36 hours. Create a Microsoft SQL Server 2005 Integration Services (SSIS) package that processes aggregated partitions every evening.
- D.Enable proactive caching on the ProductOrderStatus measure group. Set scheduled polling that re-processes the measure group whenever the system dates change.

Correct:A

11.BACKGROUN Woodgrove Bank is a banking institution that offers deposit accounts and mortgage accounts. At present, the bank holds 1,000,000 accounts. On an average 50,000 new accounts are added every year. Ten percent of the accounts are mortgage accounts. The balances of mortgage accounts are recalculated every week. Some of the existing Microsoft SQL Server Reporting Services(SSRS) Reports are double-counting transactions where there is more than one account holder for the same account. EXISTING ENVIRONMENT Woodgrove Bank has partially implemented a data warehouse named WoodgrovDW. WoodgrovDW Data Store The WoodgrovDW database schema is shown in the exhibit. (Click the Case Study Exhibits button to view the WoodgrovDW Data Store schema.)



Correct:

12. You need to reduce the duration of the daily full database backup process. What should you do?

- A. Perform transaction log backups every 30 minutes throughout the day.
- B. Partition the Transaction table by a range based on the TransactionID. Daily, back up only the file groups that have changed.
- C. Place the Transaction table in its own file group. Back up the Transaction table and the remaining file groups each evening.
- D. Partition the Transaction table by a range based on the MortgageID. Daily, back up only the file groups that have changed.

Correct: B

13. You need to identify the data mining algorithm that meets the requirements of the credit department. Which algorithm should you use?

- A. Microsoft Clustering
- B. Microsoft Decision Tree

C.Microsoft Nave Bayes

D.Microsoft Association

Correct:B

14.You need to deliver the three reports that detail the previous days transaction activity. What should you do?

A.Create a new report that has three embedded subreports. Create one standard subscription.

B.Create three new reports based on the same dataset. Create one data-driven subscription.

C.Create three data-driven subscriptions on a single shared schedule. Ensure that the e-mail recipient list is identical across all three subscriptions.

D.Create three standard subscriptions on a single shared schedule. Ensure that the mail recipient list and subject are identical across all three subscriptions.

Correct:A

15.You need to meet the fraud detection requirements. What should you do?

A.Use Percentage Sampling in SSIS.

B.Use a Neural Network Data mining algorithm.

C.Create an SSAS Key Performance Indicator for each account.

D.Monitor transactions by using SQL Server Profiler.

Correct:B

16.You need to record package and task outcome in the ETLAudit table. Which components of SSIS should you use?

A.Custom event handlers

B.Data flow error output

C.SSIS log provider for SQL Server

D.Execute SQL tasks with failure precedence constraints

Correct:A

17.You need to resolve the blocking issue that is affecting the performance of the CRM system. What should you do?

A.Replace the named query with an SQL view.

B.Set the transaction isolation level to serializable in the named query.

C.Set the source database to use snapshot isolation.

D.Set the transaction isolation level to repeatable read in the named query.

Correct:C

18.You need to resolve the double counting of transactions issue in the existing reports. What should you do?

A.Apply a many-to-many relationship between the Transaction measure group and the Person dimension in the WoodgroveSSAS database.

B.Apply a Conditional Split transformation in the Transaction data in the SSIS package.

C.Delete the AccountHolder table in the WoodgroveDW database.

D.Apply a foreign key relationship between the Person table and the Transaction table in the WoodgroveDW database.

Correct:A

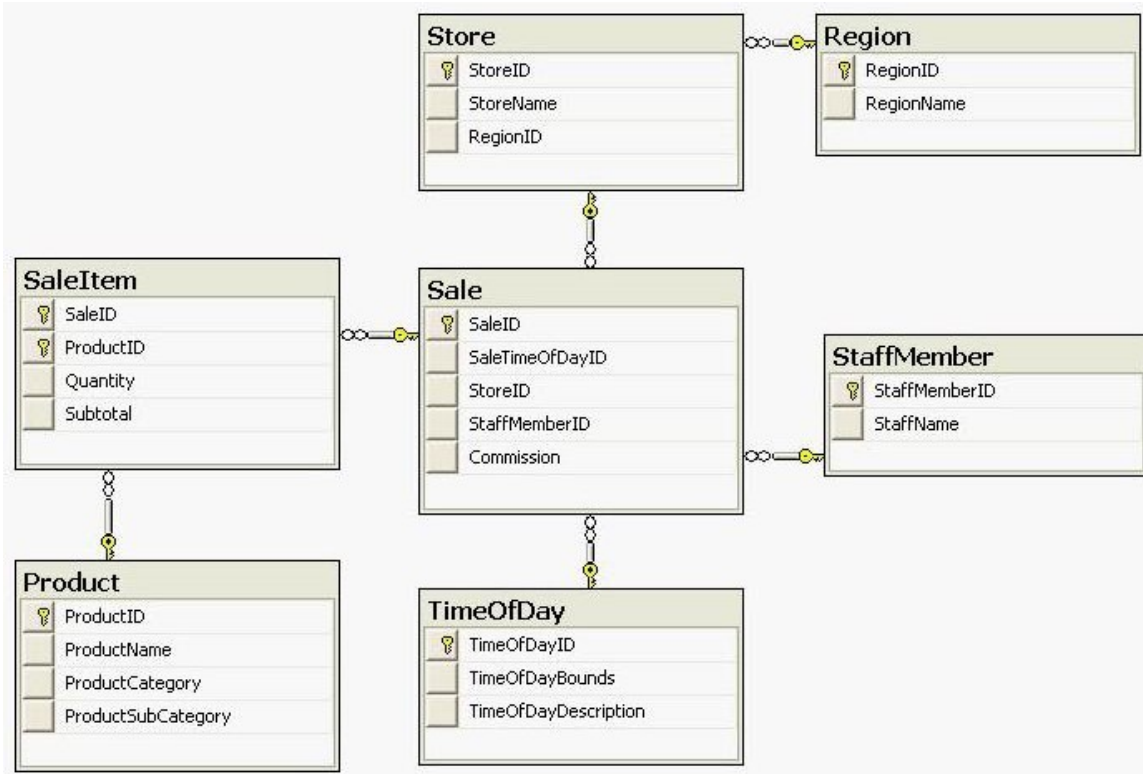
19.You need to select the appropriate edition of SQL Server 2005 for the portable computers that are used in the Mortgage Data Cleansing project. Which edition should you use?

A.Microsoft SQL Server 2005 Mobile Edition

- B. Microsoft SQL Server 2005 Express Edition
- C. Microsoft SQL Server 2005 Standard Edition
- D. Microsoft SQL Server 2005 Workgroup Edition

Correct: B

20.BACKGROUND Fourth Coffee is a chain of coffee shops that operates in North America. Service personnel in the outlets receive commission for each item they sell. The outlets are grouped into geographical reg. **EXISTING ENVIRONMENT** Fourth Coffee Database Schema The Fourth Coffee database schema is shown in the following exhibit. (Click the Case Study Exhibits button to view the Fourth Coffee database schema.)



Correct: