

IT 认证电子书



质 量 更 高 服 务 更 好

半年免费升级服务

<http://www.itrenzheng.com>

Exam : **70-699**

Title : Windows Server 2003,
MCSA Security
Specialization Skills Update

Version : Demo

1.You are the network administrator for your company. The network consists of a single Active Directory domain. All servers run Windows Server 2003. All client computers run Windows XP Professional. The network contains a domain controller named DC1. You create a preconfigured user profile on a client computer named Computer1. You need to ensure that all users receive the preconfigured user profile when they log on to the network for the first time. All users must still be able to personalize their desktop environments.

What should you do?

- A. From Computer1, copy the user profile to \\DC1\netlogon\Default User.
- B. From Computer1, copy the user profile to \\DC1\netlogon\Default User. Change the User Profile path for all users in Active Directory to \\DC1\netlogon\Default User.
- C. On Computer1, copy the user profile to the C:\Documents and Setting\Default User folder. Share the Default User profile on the network.
- D. Create a Folder Redirection policy in Active Directory.

Answer: A

2.Your network consists of an Active Directory domain. All client computers run Windows Vista. All user accounts have roaming user profiles. You have 10 kiosk computers. The kiosk computer accounts are in an organizational unit (OU) named KioskOU. You need to ensure that all users who log on to the kiosk computer have the same user profile. The solution must ensure that users receive their personalized user profiles when they log on to all computers except the kiosk computers.

What should you do?

- A. Modify the profile path settings on the user accounts.
- B. Modify the home directory settings on the user accounts.
- C. Modify the user profile settings by using a Group Policy object (GPO).
- D. Rename %systemdrive%\users\default\ as %systemdrive%\users\default.man on the kiosk computers.

Answer: C

3.Your network consists of an Active Directory domain. You have an organizational unit (OU) named KioskOU and an OU named StaffOU. All user accounts are located in the StaffOU. All user accounts are configured to use roaming profiles. You have a computer named Kiosk1 that runs Windows XP. Kiosk1 is located in KioskOU. You need to prevent user profiles from being stored on Kiosk1. The solution must ensure that users can access their roaming profiles on other computers.

What should you do next?

- A. Link a Group Policy object (GPO) to StaffOU. Enable Limit profile size and set it to 0 KB.
- B. Link a Group Policy object (GPO) to KioskOU. Enable Limit profile size and set it to 0 KB.
- C. Link a Group Policy object (GPO) to StaffOU. Enable Delete cached copies of roaming profiles.
- D. Link a Group Policy object (GPO) to KioskOU. Enable Delete cached copies of roaming profiles.

Answer: D

4.You are the network administrator for your company. The network consists of a single Active Directory domain. All client computers run Windows XP Professional. The finance department uses a specific naming process to audit users and their computers. The process requires that each user's client computer has an account in Active Directory created by the IT Department and that each client computer name corresponds to a specific user account. A user named Maria is a member of only the Domain Users

security group. She reports that the hardware on her computer fails. She receives a new computer. You need to add Maria's new computer to the domain. You need to comply with the finance department naming process.

What should you do?

- A. Instruct Maria to run the `ipconfig /flushdns` command on her new computer and to add the new computer to the domain by using the same computer name as her failed computer.
- B. Assign Maria permissions for adding computer accounts to the default container named Computers. Instruct Maria to add her new computer to the domain.
- C. Reset the computer account for Maria's failed computer. Instruct Maria to add her new computer to the domain by using the same name as her failed computer.
- D. Configure the IP address of Maria's new computer to be the same as the failed computer. Instruct Maria to add the new computer to the domain.

Answer: C

5. Your network consists of a single Active Directory domain. All servers run Windows Server 2003 Service Pack 2 (SP2). The domain contains a member server named Server1. Server1 is a file server. You accidentally delete the computer account for Server1 from the domain. You need to ensure that users can access the file shares on Server1 by using their domain user accounts. You must achieve this goal by using the minimum amount of administrative effort.

What should you do?

- A. On Server1, run the `Netdom reset` command.
- B. On Server1, add the computer to a workgroup and then add the computer to the domain. Restart Server1.
- C. From Active Directory Users and Computers, create a new computer account named Server1 in the domain. Restart Server1.
- D. On a domain controller, perform an authoritative restore in Active Directory for the Server1 computer account. Restart Server1.

Answer: B

6. Your network consists of a single Active Directory domain. You install a new backup program. The backup program requires a service account. You create a service account in the domain. You need to ensure that the service account can back up all member servers and client computers in the domain. You must ensure that the service account cannot be used to restore files and folders.

What should you do?

- A. Add the service account to the domain Backup Operators group.
- B. Add the service account to the Backup Operators group on every server and every client computer.
- C. Assign the Backup files and directories user right by using a Group Policy object (GPO).
- D. Assign the Impersonate a client after authentication user right by using a Group Policy object (GPO).

Answer: C

7. Your network consists of an Active Directory domain. You attempt to log on to a computer that runs Windows XP and receive the following error message. You log on to the computer by using a local user account and verify that you can establish connections to domain controllers on the network. You need to ensure that you can log on to the computer.

What should you do?

- A. From the DNS snap-in, create a host record for the computer account.
- B. From Active Directory Users and Computers, reset the computer account.
- C. From System Properties, join the computer to a workgroup and then join the computer to the domain.
- D. From Active Directory Users and Computers, select Trust computer for delegation for the computer account.

Answer: C

8. Your network consists of an Active Directory domain. You have an organizational unit (OU) name OU1. You have a user named User1. User1 is located in the Users container. You need to ensure that User1 can add computer accounts to OU1.

What should you do?

- A. Open Active Directory Users and Computers. Right-click OU1 and then click Delegate control.
- B. Open Active Directory Users and Computers. Right-click the Users container and then click Delegate control.
- C. Open Group Policy Management. Link a Group Policy object (GPO) to the domain. Configure the Add workstations to domain user right.
- D. Open Group Policy Management Console. Link a Group Policy object (GPO) to OU1. Configure the Add workstations to domain user right.

Answer: A

9. Your network consists of an Active Directory domain. You have 12,000 computer accounts located across several organizational units (OU). You create a new OU named OU1. You need to move all computer accounts that have a description of Sales to OU1.

Which tools should you use?

- A. dsget.exe and csvde.exe
- B. dsget.exe and dsmove.exe
- C. dsquery.exe and csvde.exe
- D. dsquery.exe and dsmove.exe

Answer: D

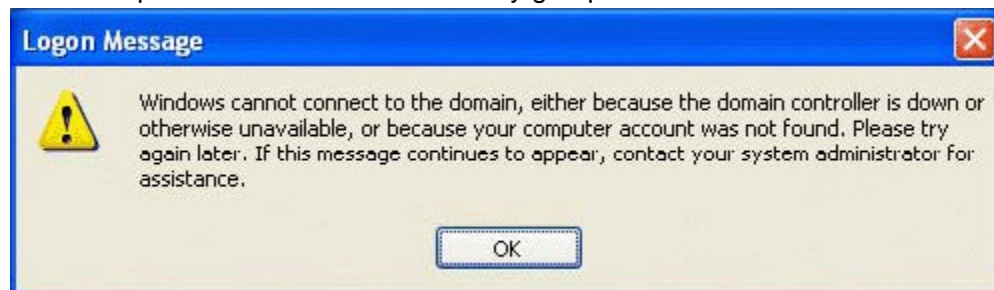
10. You are the network administrator for your company. The network consists of a single Active Directory domain. All domain controllers run Windows Server 2003. The sales department recently hired 10 new employees. User accounts for these employees were created in Active Directory. The manager of the sales department sent you a list of the new users and asked you to add the user accounts to an existing global group named SalesDept. You need to add the users to the SalesDept global group.

What are two possible ways to achieve this goal? (Each correct answer presents a complete solution. Choose two.)

- A. Use the dsadd user command to add the user accounts to the SalesDept global group.
- B. Use the dsmod group command to add the user accounts to the SalesDept global group.
- C. In Active Directory Users and Computers, select all 10 user accounts. Right-click the selected users, and then select the Properties menu command.
- D. In Active Directory Users and Computers, select all 10 user accounts. Right-click the selected users, and then select the Add to a group menu command.

Answer: DB

11. Your network consists of an Active Directory forest that contains two domains named contoso.com and Region1.contoso.com. All servers in the network run Windows Server 2003 Service Pack 2 (SP2). You attempt to create a universal security group and obtain the result shown in the exhibit.



You need to ensure that you can create universal security groups in the contoso.com domain. What should you do in the contoso.com domain?

- A. Modify the Default Domain Policy.
- B. Modify the Default Domain Controllers Policy.
- C. Raise the domain functional level of the contoso.com domain.
- D. Add your user account to the Enterprise Administrators group.

Answer: C

12. Your network consists of a single Active Directory domain named contoso.com. The functional level of the domain is Windows Server 2003. Contoso contains two global groups named Users-Global and Managers-Global. Contoso contains 10 servers that run Windows Server 2003 Service Pack 2 (SP2). Each server has two local groups as shown in the following table.

Local group

Group membership

Users-Resources

Contoso\Users-Global

Managers-Resources

Contoso\Managers-Global

Each Users-Resources local group has access to the local resources on the server.

You need to implement a security solution that meets the following requirements:

Managers-Global members must have access to all the resources that are accessible to Users-Global members.

The solution must minimize administrative effort.

What should you do?

- A. Add the Managers-Global group to the Users-Global group.
- B. Add the Managers-Global group to the Users-Resources local group on each server.
- C. Create two universal groups named Users-Universal and Managers-Universal. Assign the two universal groups permissions to the resources.
- D. Create two domain local groups named Users-Domain-Local and Managers-Domain-Local. Assign the two domain local groups permissions to the resources.

Answer: A

13. You are the domain administrator for your company's Active Directory domain. All domain controllers run Windows Server 2003. The network consists of 10 offices located across South America. The organizational unit (OU) structure consists of one top-level OU for each branch office. Each top-level OU contains eight or more child OUs, one for each department. User accounts are located in the appropriate departmental OU within the appropriate office OU. For security purposes, you routinely disable user accounts for terminated employees. As part of an internal audit, you need to create a list of all disabled user accounts. You need to generate the list of disabled user accounts as quickly as possible. What are two possible ways to achieve this goal? (Each correct answer presents a complete solution. Choose two.)

- A. In Active Directory Users and Computers, create a new saved query.
- B. Run the dsget user command.
- C. Run the dsquery user command.
- D. Run the netsh command.

Answer: DA

14. Your network consists of a single Active Directory domain. You have two global security groups named Group1 and Group2. You discover that you are unable to make Group2 a member of Group1. You need to ensure that you can make Group2 a member of Group1. What should you do?

- A. Modify the properties of Group1.
- B. Modify the properties of Group2.
- C. Raise the domain functional level.
- D. Run the Delegation of Control Wizard.

Answer: C

15. Your network consists of a single Active Directory domain. You have a member server named Server1 that runs Windows Server 2003 Service Pack 2 (SP2). You need to track all authentication attempts on Server1.

What should you do?

- A. Enable auditing of logon event events in Server1s local policy.
- B. Enable auditing of logon event events in the Default Domain Controller Policy.
- C. Enable auditing of account logon event events in Server1s local policy.
- D. Enable auditing of account logon event events in the Default Domain Controller Policy.

Answer: A