

# IT 认证电子书



质 量 更 高 服 务 更 好

半年免费升级服务

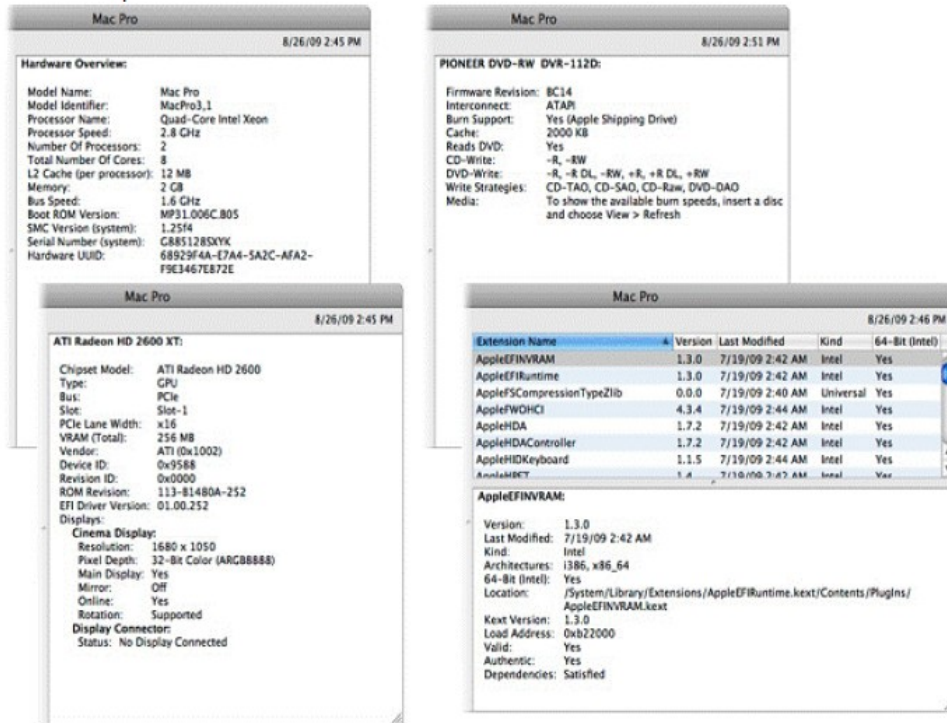
<http://www.itrenzheng.com>

**Exam** : **9L0-410**

**Title** : OS X Support Essentials  
10.7 Exam

**Version** : DEMO

1.Review the four Apple System Profiler screenshots from a single Mac OS X v10.7 computer, and then answer the question below.



What version of EFI firmware is installed on the computer whose profile is shown above?

- A.MP31.006C.B05
- B.1.25f4
- C.68929F4A-E7A4-5A2C-AFA2-F9E3467E872E
- D.01.00.252
- E.BC14
- F.1.3.0

**Answer: A**

2.When a user chooses Shut Down from the Apple menu, what process quits all of the user's open applications and tells the kernel to power down the computer?

- A.init
- B.launchd
- C.kernel\_task
- D.loginwindow

**Answer: D**

3.How do you start up a Mac OS X v10.7 computer in single-user mode?

- A.Type the command reboot -single in Terminal.
- B.Hold down the Command-S keys while the computer restarts.
- C.Hold down the Shift-Option keys while the computer restarts.
- D.Select Single-User Mode in the Startup Disk pane of System Preferences and restart the computer.

**Answer: B**

4.Which folder contains items that are started by the launchd process when a Mac OS X v10.7 computer starts up?

- A./etc/launchd/
- B./var/run/launchd/
- C./Library/Extensions/
- D./System/Library/LaunchDaemons/

**Answer: D**

5.Which statement describes characteristics of starting up a Mac OS X v10.7 computer in Safe Boot?

- A.To simplify troubleshooting, non-core components of the operating system do not load.
- B.To prevent user access to sensitive system files, Simple Finder loads instead of the standard Finder.
- C.To increase data security, local volumes are mounted with read-only privileges assigned to all standard users.
- D.To increase data security, Firewall and Sharing settings are modified to enable only the minimum set of protocols.

**Answer: A**

6.You have restarted a computer from the Mac OS X v10.7 Install DVD in order to repair its hard disk.Which procedure below will let you perform the repair?

- A.Advance to the volume selection pane in the Installer, select the hard disk, and click Verify & Repair.
- B.Quit the Installer, then open Disk Utility from the /Applications/Utilities/ folder on the DVD, select the hard disk, and click Repair Disk.
- C.Without quitting the Installer, open Disk Utility from the Utilities menu in the Installer application, select the hard disk, and click Repair Disk.
- D.Quit the Installer, then open Disk Utility from the /Applications/Utilities/ folder on the computer's hard disk, select the hard disk, and click Repair Disk.

**Answer: C**

7.When a user performs a default installation of Mac OS X v10.7 on a computer that has an earlier version of Mac OS X and existing user accounts, what happens?

- A.The Installer archives the older operating system, and maintains the user accounts.
- B.The Installer replaces the older operating system with the Mac OS X v10.7 operating system
- C.The Installer upgrades the older operating system to Mac OS X v10.7.It archives the user accounts, but they can be restored manually.
- D.The Installer erases the older operating system and installs Mac OS X v10.7.It archives the user accounts, but they can be restored manually.
- E.The Installer presents the options to upgrade, archive, or erase the older operating system and user accounts, and the installation proceeds according to the user's selection.

**Answer: B**

8.When installing onto a blank hard disk, which of these is installed by default by the Mac OS X v10.7 Installer?

- A.X11

- B.Rosetta
- C.Developer Tools
- D.QuickTime Player 7
- E.All printer drivers on the Install DVD

**Answer: A**

9.Which task is NOT performed by loginwindow when a user logs in?

- A.Launch Dock and Finder.
- B.Launch Login Items specified in Accounts preferences.
- C.Scan for new peripheral devices and register them with Launch Services.
- D.Configure input device and system settings according to System Preferences.

**Answer: C**

10.Migration Assistant is running on a Mac OS X v10.7 computer.It CANNOT migrate user files from \_\_\_\_\_.

- A.another volume on the same computer
- B.a Time Machine archive on the same computer
- C.an archive created by the Backup utility, and stored on a MobileMe user's mounted iDisk
- D.another Macintosh computer that is connected in target disk mode to the computer where Migration Assistant is running

**Answer: C**

11.Which procedure will display a list of recently installed software updates on a Mac OS X v10.7 computer?

- A.Open Software Update and click Receipts.
- B.Open Installer and choose Show Items from the File menu.
- C.Open Software Update preferences and click Installed Software.
- D.Open Console, click Show Log List, and choose Software Update.log under /Library/Logs.
- E.Start up the computer from the Mac OS X v10.7 Install DVD and choose Show Items from the File menu.

**Answer: C**

12.You need to update several networked iMacs running Mac OS X v10.7 with the latest system update from Apple.Which statement describes a valid method of using a single computer to begin this task?

- A.Choose Copy Update to Multiple Computers from the Update menu in Software Update on one computer, and click Download.
- B.Choose Download Only from the Update menu in Software Update on one computer, and then distribute the updates to the target iMacs over the network.
- C.Download the updates on one computer, and store them in the computer's /Network/Software Updates/ folder; Software Update will automatically search this folder first when it runs on the target iMacs.
- D.Identify available updates using Software Update, use Safari to download the updates from the Apple Support website on one computer, and then distribute the updates to the target iMacs over the network.

E.Run Software Update on one computer, then turn on Software Update Sharing in the Sharing preferences; when Software Update runs on the other computers, it will preferentially download updates from the local computer.

**Answer: D**

13.You are configuring a Mac OS X v10.7 computer that will be located in a public space.You want anyone to be able to log in and use Safari, but you do NOT want their Safari browser history to remain on the computer after users log out.Which action will let the computer function in the desired manner?

- A.Create a Guest account.
- B.Enable the Guest account.
- C.Create a Sharing Only account.
- D.Enable the Sharing Only account.
- E.Create a managed account with Parental Controls.

**Answer: B**

14.Review the screenshot, and then answer the question below.



You perform a default installation of Mac OS X v10.7, and then create an account for Chris.The Chris account is a member of which group?

- A.staff
- B.chris
- C.wheel
- D.admin

E.workgroup

**Answer: A**

15.Review the screenshots of the My Account pane of Accounts preferences, and a Finder window, and then answer the question below.



A Mac OS X v10.7 computer has three local users configured as shown above.Bill Sykes has lost the password to his account.Which procedure will let you reset the password?

- A.Log in as Bill Sykes using the root password, then reset Bill Sykes' password from Accounts preferences.
- B.Log in as Samuel Pickwick, then open Reset Password from the Utilities folder, and reset Bill Sykes' password.
- C.Restart the computer from the Mac OS X Install DVD, then open Reset Password from the Utilities menu, and reset Bill Sykes' password.
- D.Log in as Samuel Pickwick, open Directory preferences and enable the root user, then authenticate as the root user in Accounts preferences, and reset Bill Sykes' password.

**Answer: C**

16.Which of these is an attribute in a user record for a Mac OS X v10.7 user account?

- A.Access ID (AID)
- B.Security ID (SID)
- C.Service Profile ID (SPID)
- D.Generated Unique ID (GUID)

**Answer: D**

17.The primary role of the master password in Mac OS X v10.7 is to let you \_\_\_\_\_.

- A.access all the passwords stored in a local keychain
- B.reset the password of an account that has FileVault enabled
- C.change the startup device by holding down the Option key while the computer starts up

D.connect to any password-protected web server whose password is stored in a local keychain

**Answer: B**

18.When a user logs into her computer, she cannot access her login keychain.What would explain this?

A.In a previous login session, the user removed Keychain Access from her login items.

B.In a previous login session, the user changed her account password using Accounts preferences.

C.In a previous login session, the user enabled FileVault on her account, and then changed her account password using Accounts preferences.

D.Prior to the current login session, the user changed her account password using the Reset Password utility on the Mac OS X v10.7 Install DVD.

**Answer: D**

19.A standard user enabled FileVault on his account, and did not enter a hint for his account password in Accounts preferences.Now he has lost his account password.Which procedure can an admin user follow to let this user log in again?

A.Log in to the admin user account, open Keychain Access, open the user's login keychain, and then let the user view the account password.

B.Select the standard user account at the Login window, click the Reset Password button, enter the master password, and then reset the account password.

C.Log in to the admin user account, open Accounts preferences, click the Reset Password button, enter the admin user's password, and then reset the standard user's account password.

D.Log in to the admin user account, change the privileges on the user's home folder, mount the home folder image using Disk Utility, and then reset the password in Accounts preferences.

**Answer: B**

20.Which Mac OS X v10.7 tool can help you create a strong password?

A.Security Audit, accessible from Directory Utility

B.Password Audit, accessible from Security preferences

C.Password Assistant, accessible from Accounts preferences

D.Password Checking, accessible from Parental Controls preferences

**Answer: C**