

IT 认证电子书



质 量 更 高 服 务 更 好

半年免费升级服务

<http://www.itrenzheng.com>

Exam : 9L0-420

**Title : Mac Integration Basics
10.10 Exam**

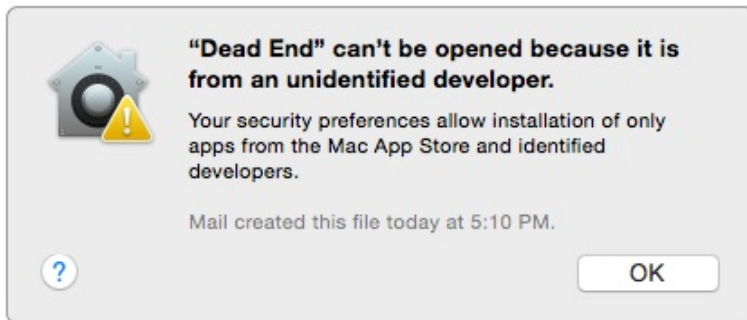
Version : DEMO

1.Where can Time Machine store backup files?

- A. DVD-R disc
- B. Internal startup volume
- C. External FireWire hard disk
- D. iCloud

Answer: C

2.Review the screenshot, then answer the question below.



You try to open an application called Dead End, but you get the alert shown above. You know the application comes from a trusted source. How can you open the Dead End application?

- A. Open Security & Privacy preferences, click the Gatekeeper tab, click the Add (+) button beneath the Authorized Applications list, and enter Dead End.
- B. Control-click the application, choose Open from the shortcut menu, then click Open in the dialog that appears.
- C. Option-click the application.
- D. Open Security & Privacy preferences, click the Gatekeeper tab, click the Add (+) button beneath the Developers list, and enter Houdini.

Answer: B

3.You've installed Boot Camp and Windows on your Mac. Which Windows tool can you use to set up the Mac to start up in OS X by default?

- A. Boot Camp Wizard
- B. Mac OS Startup utility
- C. Windows Startup control panel
- D. Windows Boot Camp control panel

Answer: A

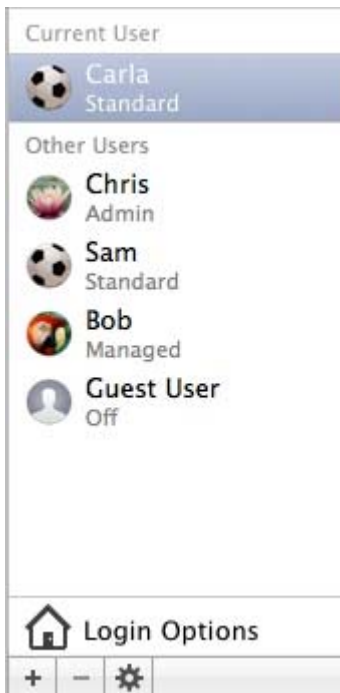
4.You connected a new USB hard drive to your Mac. Which action will configure Time Machine to back up your data to the USB drive?

- A. Dragging the USB hard disk icon from the desktop onto the Time Machine icon in the Dock.
- B. Dragging the USB hard disk icon from the desktop onto the Time Machine icon in the /Applications/Utilities/ folder.
- C. Clicking Time Machine in System Preferences, then clicking Select Backup Disk, selecting the USB hard disk, and clicking "Use Disk."
- D. Clicking the Time Machine icon in the Dock, selecting the new USB hard disk as the backup

destination, choosing ZIP from the Backup Format list, and clicking Start.

Answer: C

5.Review the screenshot then answer the question below.



You have a Mac with the user accounts shown in the screenshot. To configure the Mac to connect to an Active Directory server, you must authenticate as which user?

- A. Chris
- B. Carla
- C. Sam
- D. Bob

Answer: A