

# IT 认证电子书



质 量 更 高 服 务 更 好

半年免费升级服务

<http://www.itrenzheng.com>

**Exam : A4040-129**

**Title : Assessment: IBM i 7.1  
Administration**

**Version : Demo**

1.A batch job runs daily in the QBATCH subsystem with a run priority of 50. The job normally takes an hour to complete and no other batch jobs run during this time. The administrator needs to reduce the run time and requests the run priority be lowered to 40. However1 after the change, run time does not decrease.

What is the likely reason that the run time did not decrease?

- A. The run priority applies to only interactive jobs.
- B. D82 Symmetric Multiprocessing has not been installed.
- C. The run priority represents only the relative importance of the job.
- D. The system value QPFRADJ (Performance Adjustment) is set to "No adjustment."

**Answer: C**

2.Which graphical tool will help identity additional details about activity on the system, to isolate the root cause of performance problems?

- A. PEX
- B. iDoctor
- C. Performance Monitor
- D. Communications Trace

**Answer: B**

3.The threshold limit has been reached for the system ASP on a system running IBM i 7.1 . There are some disk units configured to a user ASP available. Business continuing policy prevents the administrator from stopping the system.

How could the system administrator correct the storage problem in the system ASP?

- A. Increase the ASP threshold above the currently utilized storage.
- B. Concurrently remove available disk units from user ASP using the "Remove units from configuration" SST option and add them to system ASP.
- C. Switch to the backup system using an HA solution and restart the original system to DST. Remove the available disk units from user ASP and add them to system ASP.
- D. Initiate a control panel function 21 to activate DST on the system console for the affected partition. Use the DST feature to compress the parity stripe to increase available storage.

**Answer: B**

4.An administrator needs to restore a physical file DATALIB/SMALLFILE from a Save 21 backup of library DATALIB. DATALIB has several hundred large database files plus other objects. The administrator has the job log and output from the last full save of DATALIB.

What should the administrator do to restore SMALLFILE in the shortest time?

- A. Run the RST command for object "/QSYS.LIB/DATALIB.LIB/SMALLFILE.FILE"
- B. Delete SMALLFILE, run RSTLIB specifying \*NEW objects, and specify library DATALIB as the starting library.
- C. Run RSTLIB for library DATALIB specifying the position parameter for SMALLFILE in library DATALIB from the output of the save.
- D. Run RSTOBJ for DATALIB/SMALLFILE specifying the position and sequence number for SMALLFILE in library DATALIB from the output of the save.

**Answer: D**

5.What are the key benefits provided by database journaling?

- A. Can send updates concurrently to a second system Can back out incomplete transactions Can reduce system I/O workload
- B. Can reduce application complexity Can back out incomplete transactions Can maintain database integrity in the case of an unexpected outage
- C. Can send updates concurrently to a second system Can increase performance Can maintain database integrity in the case of an unexpected outage
- D. Can send updates concurrently to a second system Can back out incomplete transactions and commitment control Can maintain database integrity in the case of an unexpected outage

**Answer: D**

6.Journaling of a large library is running on SYSTEMA and the journal is system managed. Remote journaling to SYSTEMB has been configured. Due to a communications problem between SYSTEMA and SYSTEMB, remote journaling is not working and cannot be quickly restarted. Disk utilization on SYSTEMA is increasing rapidly. To reduce disk utilization the administrator tries to delete journal receivers on SYSTEMA.

Attempts fail and the following message displays:

CPF705F: Receiver not replicated to 1 remote journals.

What must the administrator do to delete journal receivers on SYSTEMA?

- A. Delete and recreate only the journal, and then delete the receivers.
- B. Stop journaling, as this must be ended first, and then delete the receivers.
- C. Use the DLTJRNRCV command and change the delete option parameter to ignore target receivers.
- D. Use the CHGJRN command to change the Manage Receivers parameter to allow user management of journal receivers and then delete the receivers.

**Answer: C**

7.Due to an application problem, management has requested the IPL of a partition running IBM i 7.1. The administrator initiates the IPL, and during the restart phase notices the IPL is running in manual mode even though the HMC partition settings indicate B NORMAL.

Why is the IPL running in manual mode?

- A. The PWRDWN SYS command restart parameter is set to \*MANUAL.
- B. Manual is the default IPL mode when there is a console problem.
- C. The QIPLTYPE system value is set to "Attended IPL, Console in debug mode".
- D. Manual is the default IPL mode when the previous system end indicator is abnormal.

**Answer: C**

8.An administrator has been asked to update an IBM i 7.1 system to the most current Technology Refresh available from IBM.

Which method is the most appropriate to achieve the update?

- A. Perform a D-mode IPL using the Technology Group PTF package SF99707.
- B. Perform a slip install using the most current 1\_Base\_01 resave media available.
- C. Perform a scratch install using the most current 1\_Base\_01 resave media available.
- D. Perform an install of the Technology Group PTF package SF99707 using the GO PTF menu.

**Answer: D**

9.A company has just purchased a new POWER7 server running IBM i 7.1 to replace an older system running V5R4M5. Due to a mistake by a programmer on the V5R4 system, data was accidentally deleted. To recover, the administrator backs up the deleted data to virtual tape on the 7.1 server and attempts to restore it on the V5R4 server. The restore on the V5R4 server fails with a message stating the data was saved from a more recent release of the operating system.

Which option will solve this problem?

- A. Save the data to physical media.
- B. Set the target release parameter to V5R4M0 when saving the data.
- C. ETP the virtual tape image catalog from the 7.1 server using binary mode.
- D. Use the target release parameter \*RECOVER and the access path parameter set to VSR4MO.

**Answer: B**

10.A disaster recovery test is being performed, using backups from a production system.

The backup process is as follows:

Full system save, using GO SAVE Option 21, for weekly backup

SAVCHGOBJ LIB(\*ALL) is used for daily library backup, in addition to DLO and IFS saves

The disaster recovery test is at the point where libraries are ready to be restored

Which pair of actions will restore the libraries to the most recent save point, in the minimum amount of time?

- A. Use RSTLIB(\*NONSYS) to restore all libraries and object from the SAVE 21 weekly save. For each daily tape, run a RSTLIB for each library saved by SAVCHGOBJ.
- B. Use RSTLIB(\*NONSYS) to restore all libraries and object from the SAVE 21 weekly save. Then run a RSTOBJ for each library saved by SAVCHGOBJ on the most recent daily tape.
- C. Run RSTOBJ for each library saved by SAVCHGOBJ on the most recent daily tape. Then run RSTLIB(\*NONSYS) OPTION(\*NEW) to restore the remaining libraries and objects from the SAVE 21 weekly save.
- D. For each daily tape, run RSTOBJ for each library saved by SAVCHGOBJ on the daily tapes. Then run RSTOBJ(\*NONSYS) OPTION(\*NEW) to restore the remaining libraries and objects from the SAVE 21 weekly save.

**Answer: B**

11.An administrator maintains four image catalogs on a host partition that are used by network-based virtual optical drives. Periodically, images are added or removed from the catalog and it must be re-exported.

What is the simplest method to update the share and NES export?

- A. Create a CL program.
- B. Create a REXX program.
- C. Create a Qshell script.
- D. Run the statements manually as needed.

**Answer: B**

12.Which statement describes server firmware delivery that uses PTF5 on a POWER7 system?

- A. A single IBM i (57703S1) PTF is ordered to update server firmware.

- B. The firmware is ordered using the marker PTF ID, such as MHxxxxx, and is installed with normal IBM i PTE commands.
- C. The server firmware PTE (MFxxxxx) is ordered from the connected HMC and is sent to the service partition for install.
- D. The HIPER PTF group is ordered for the Licensed Internal Code (5770999) and the order is flagged with Include Firmware Update \*YES.

**Answer: A**

13.A Power 720 currently has its firmware update policy set to Os Managed. Which statement is correct?

- A. Server firmware updates will always be disruptive.
- B. IPLing from the A side of any partition will activate the new server firmware.
- C. Only the Service partition needs PTEs to be installed for the new server firmware to be immediately activated.
- D. Only the Managing partition needs PTF5 to be installed for the new server firmware to be temporarily activated.

**Answer: B**

14.A customer is upgrading an HMC to a new release using Recovery DVD5 for the new release level. Which action must be completed before performing the upgrade from DVD process?

- A. Run the 'HMC Management> Back Up HMC Data' to DVD.
- B. Run the 'HMC Management> Save Upgrade Data' to HMC disk.
- C. Run the 'HMC Management> Back Up HMC Data' to NFS server.
- D. Run the 'HMC Management> Save Upgrade Data' to the administrator's PC.

**Answer: B**

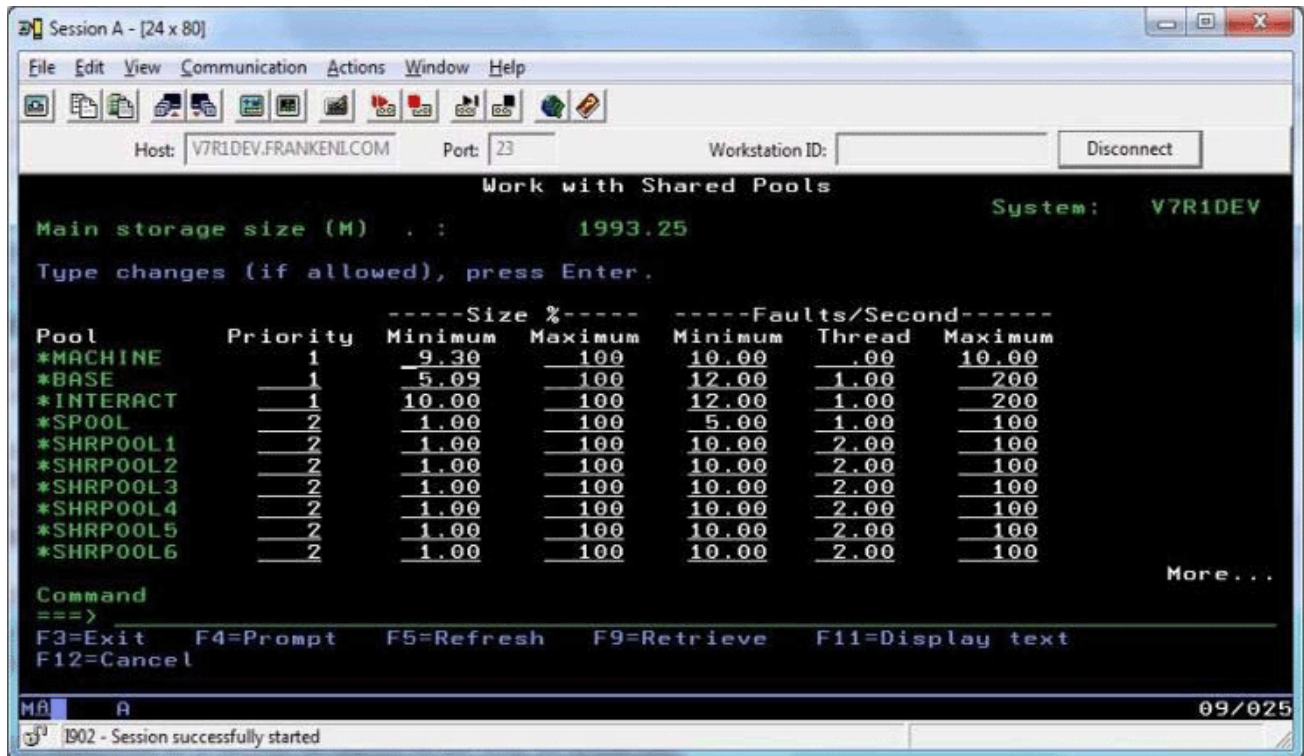
15.Several IBM i partitions at a customer site provide outdated contact information to IBM when problems are reported.

Which command should be used to correct the contact information?

- A. CHGSVCCFG
- B. CHGCNTINF
- C. SNDSRVRQS \*UPD
- D. WRKCNTINE, option 2

**Answer: D**

16.In the Work With Shared Pools panel shown, what is the meaning of the "Minimum" column under the "Size" section?



- A. The minimum amount of main storage that can be assigned to the pool in GB
- B. The minimum percentage of the total main storage that can be assigned to the pool
- C. The minimum amount of main storage that the automatic tuner will assign to the pool in GB
- D. The minimum percentage of the total main storage that the automatic tuner will assign to the pool

**Answer: D**

17. An administrator wants to ensure a job on the scheduler is ignored if the system is in a restricted state at the time it is scheduled to run.

What change will make this occur?

- A. Change the recovery action of the job schedule entry to \*NOSBM.
- B. Change the user profile on the job schedule entry to QRECOVERY.
- C. Change the frequency option of the job schedule entry to \*ACTIVE.
- D. Use the option on the WRKJQBSCDE screen for "hold when restricted."

**Answer: A**

18. A company has acquired a new system to handle data warehousing workload, but its IP address has not yet been added to the DNS server. The administrator added an IP address for this system into host table entry of the local system. When attempting to connect using the host name, the connection fails. Using the IP address to connect works normally.

What will resolve this issue?

- A. Add the gateway IP address to the local host table.
- B. Set the name resolution to \*LOCAL on the TCP/IP Domain screen.
- C. Set the name resolution to \*RMTONLY on the TCP/IP Domain screen.
- D. Specify the fully qualified name of the remote system when attempting to communicate with it.

**Answer: B**

19. An administrator needs to determine the level of firmware running on an IBM i 7.1 system.

How is this done?

- A. Using the DSPFMWSTS command. The firmware levels on the system are presented in the resulting display.
- B. In DST/SST start the Hardware Service Manager. Use P16 to print the hardware configuration. The active firmware level is provided in the report heading.
- C. In DST/SST start the Hardware Service Manager. Select "Packaging Hardware Resources" option. The firmware level is displayed in the heading of the resulting panel.
- D. In Operations Navigator, right-click on the system and select "Properties." On the resulting panel, click the "Service" tab. The firmware level is on the resulting panel.

**Answer: A**

20. An administrator has been asked to install the following PTF packages from DVD.

SF99710 Cumulative PTF Package

SF99627 Electronic Service Agent Group

SF99707 Technology Refresh

SF99708 Group Security

SF99709 Group HIPER

Using Option 8 (Install Program Temporary Fix Package) on the GO PTF menu, how can the administrator install all of the above PTFs in the shortest possible time?

- A. Install all packages as a multiple volume PTF set.
- B. Install SF99710 Cumulative PTF Package as it contains all of the other PTFs.
- C. Load and permanently apply the cumulative package followed by each of the group PTFs.
- D. Install the Technology Refresh first, IPL, then install the remaining packages as a group.

**Answer: A**