

IT 认证电子书



质 量 更 高 服 务 更 好

半年免费升级服务

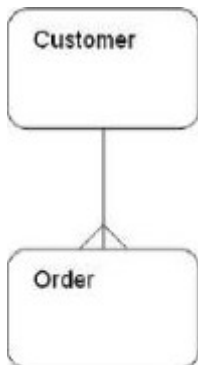
<http://www.itrenzheng.com>

Exam : FCBA

**Title : BCS Foundation Certificate
in Business Analysis**

Version : Demo

1.The entity relationship model below shows the relationship between Customer and Order.
Which of the following business rules is correct?



- A. An order may be placed by many customers.
- B. A customer may place many orders.
- C. A customer may never place an order.
- D. An order need not be placed by a customer.

Answer: B

2.What is the business analyst doing when he or she compares the BAM with the current business situation?

- A. Conceptual modelling.
- B. Analysing perspective.
- C. Gap analysis.
- D. Defining CATVVOE.

Answer: C

3.An IT department needs to upgrade its hardware to run the new version of an established operating system. The cost of this required upgrade is \$2 million. As an alternative, the IT director has suggested that the company should change to a completely different operating system. Although this will cost \$6 million, the change will bring many other benefits, including cheaper maintenance costs and increased security.

What is the avoided cost in his proposal?

- A. \$2 million.
- B. \$4 million.
- C. \$6 million.
- D. \$8 million.

Answer: A

4.Which of the following actions could sustain business change?

- A. Develop the coaching skills of selected staff members.
- B. Establish clear benefits for selected, powerful stakeholders.
- C. Retain the previous system and its associated processes.
- D. Ensure that improved staff performance is not rewarded.

Answer: A

5.As part of an investigation a Business Analyst has devised a form for users of an existing system to use to keep track of the tasks they undertake during their working day.

Which of the following describes this investigation technique?

- A. Special purpose records,
- B. Scenario analysis.
- C. Questionnaires.
- D. Activity sampling.

Answer: A

6.On a class diagram, what do the multiplicities represent?

- A. The number of attributes held within each class.
- B. The minimum and maximum number of operations in each class.
- C. The minimum and maximum number of objects in each class.
- D. The business rules for an association between two classes.

Answer: D

7.A well formed requirement is said to comply with which of the following acronyms?

- A. MOSCOW.
- B. SMART.
- C. OSCAR.
- D. MOST.

Answer: B

8.Which stage in the waterfall model is considered as several separate stages in the V model?

- A. Development.
- B. Analysis.
- C. Testing.
- D. Design.

Answer: C

9.Which of the following terms may be used to describe the attitude of a stakeholder who is NOT in favour of the project but is probably not actively opposed to it?

- A. Opponent.
- B. Neutral.
- C. Critic.
- D. Blocker.

Answer: C

10.It has been suggested that five clerical posts can be abolished when a new computer system is implemented. Under which category of costs or benefits will this be recorded?

- A. Tangible costs.
- B. Tangible benefits.
- C. Intangible costs.
- D. Intangible benefits.

Answer: B

11. During which stage of the Business Analysis Process Model would a gap analysis be carried out?

- A. Define requirements.
- B. Analyse needs.
- C. Evaluate the options.
- D. Investigate situation.

Answer: B

12. A stakeholder has been classified as 'some' on both the power/influence and interest axes of a power/interest grid.

Which of the following would be an appropriate way of managing this stakeholder?

- A. Keep on side.
- B. Keep watching.
- C. Keep informed.
- D. Keep satisfied.

Answer: A

13. What is the first stage of the waterfall systems development lifecycle?

- A. Plan.
- B. Analysis.
- C. Feasibility Study.
- D. Strategic Vision.

Answer: C

14. Different reactions may be observed when a change to working methods is proposed.

These reactions include:

- a. Enthusiasm for the change.
- b. Fear of the change.
- c. Reduced performance on the job.
- d. Reluctant acceptance of the change.

Which of the following represents the typical sequence of these four reactions?

- A. b, d, c and a.
- B. a, b, c and d.
- C. b, c, d and a.
- D. a, b, d and c.

Answer: C

15. Business rules define how actions are to be performed. Under which of the following headings are business rules considered?

- A. Explicit or implicit management statements,
- B. Statutory and internal policies.
- C. Constraints and operational guidance.
- D. Negotiable and non-negotiable limitations.

Answer: C

16.What does the O' stand for in the CATVVOE analysis?

- A. The objectives of the business system under review.
- B. The opportunities for change in the business system under review.
- C. The organisation of the business system under review.
- D. The owner of the business system under review.

Answer: D

17.In a particular organisation it is common practice to call all managers by their first name. It is part of the culture of the organisation. Newcomers are quickly corrected if they do not follow this informal approach. What would knowing about this convention be classified as in Requirements Engineering?

- A. Explicit individual knowledge.
- B. Tacit individual knowledge.
- C. Explicit corporate knowledge.
- D. Tacit corporate knowledge.

Answer: D

18.In which of the following business analysis areas does the traditional systems analyst role primarily operate?

- A. Quantifying costs and benefits.
- B. Defining the needs of the business.
- C. Implementing business changes.
- D. Specifying IT system requirements.

Answer: D

19.A batch program runs every night to raise invoices. The next day these invoices are posted out to customers by a clerk. Customers pay the invoices with cheques.

The cheques are then banked by a clerk. In this scenario, which of the following represents a business event?

- A. System prints invoices.
- B. Clerk sends invoices to customers.
- C. Customer's cheque is received.
- D. Clerk banks the cheque.

Answer: C

20.Which of the following investigation techniques involves following a user for one or two days in order to find out what a particular job entails?

- A. Scenario analysis.
- B. Protocol analysis.
- C. Shadowing.
- D. Activity sampling.

Answer: C