

IT 认证电子书



质 量 更 高 服 务 更 好

半年免费升级服务

<http://www.itrenzheng.com>

Exam : HP0-Y30

**Title : Implementing HP
Networking Technologies**

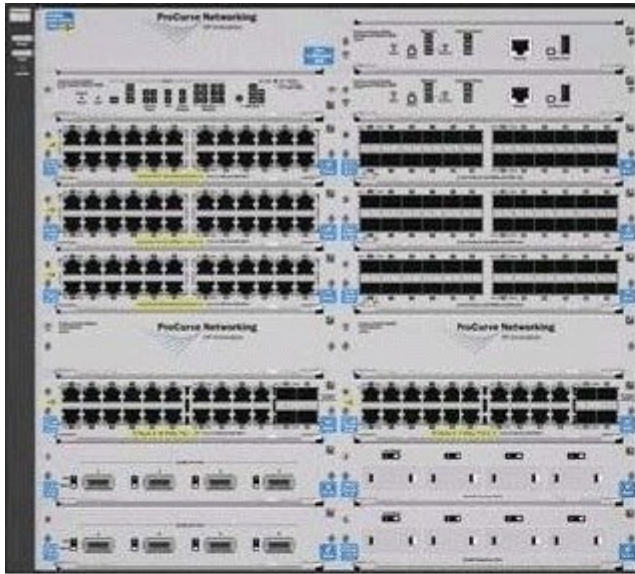
Version : Demo

1.Which A-Series switch is designed for the large data center and the enterprise core?

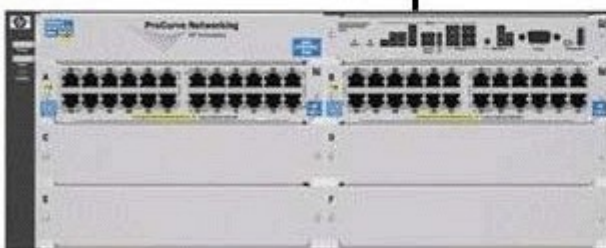
- A. A5820
- B. A7500
- C. A9500
- D. A12500

Answer: D

2.In the configuration shown in the exhibit, which users can access the web management interface of the E5406 zl?



Untagged VLAN 1
Tagged VLANs 21, 22, 23



```
E8212 zl
ip routing
ip authorized-managers 10.3.21.0/24
vlan 1
    ip address 10.3.1.1/24
vlan 21
    ip address 10.3.21.1/24
vlan 22
    ip address 10.3.22.1/24
vlan 23
    ip address 10.3.23.1/24
vlan 24
    ip address 10.3.24.1/24
vlan 21
    untagged C1-C4
vlan 22
    untagged C5-C8
```

```
E5406 zl
ip default-gateway 10.3.1.1
vlan 1
    ip address 10.3.1.2/24
vlan 21
    untagged A1-A4
vlan 22
    untagged A5-A8
Vlan 23
    untagged A9-A12
```

- A. users in VLAN 1 only
- B. users in VLAN 21 only
- C. users in all VLANs directly connected to the E5406 only
- D. users in all VLANs connected to either switch

Answer: D

3.Which unencrypted protocol can be used to back up configuration files for an HP E5400 zl Series switch?

- A. SFTP
- B. SCP
- C. FTP
- D. TFTP

Answer: D

4.You have defined VLANs and IP interfaces on an HP E5412 zl switch. Otherwise, the switch is at default settings.

What is the effect of the following command?

E5412 (config) # spanning-tree

- A. MSTP is enabled globally. The switch will function as if RSTP were enabled until other MSTP parameters are defined.
- B. MSTP is enabled globally. The switch will negotiate its role in the MST region with other switches.
- C. RSTP is enabled globally. To enable MSTP, you must specify the protocol for each VLAN that will be included in the MST region.
- D. STP is enabled globally. A specific Spanning Tree Protocol must be enabled for each VLAN in the IST.

Answer: A

5.What does the output shown in the exhibit indicate about this HP E3500-24G yl switch? (All switches in the Spanning Tree are at default settings.)

```
E3500# show spanning-tree
```

Multiple Spanning Tree (MST) Information

```
STP Enabled      : Yes
Force Version    : MSTP-operation
IST Mapped VLANs : 1-4094
Switch MAC Address : 001635-b620c0
Switch Priority   : 32768
Max Age          : 20
Max Hops         : 20
Forward Delay    : 15
```

```
Topology Change Count : 1
Time Since Last Change : 3 mins
```

```
CST Root MAC Address : 0017a4-750700
CST Root Priority     : 0
CST Root Path Cost    : 40000
CST Root Port        : 23
```

```
IST Regional Root MAC Address : 001635-b620c0
IST Regional Root Priority     : 32768
IST Regional Root Path Cost    : 0
IST Remaining Hops             : 20
```

```
Root Guard Ports      :
TCN Guard Ports       :
BPDU Protected Ports  :
BPDU Filtered Ports   :
PUSH Protected Ports  :
PUSH Filtered Ports   :
```

Port	Type	Cost	Priority	State	Designated Bridge	Hello Time	PtP	Edge
1	100/1000T	200000	128	Forwarding	001635-b620c0	2	Yes	Yes
...								
23	100/1000T	20000	128	Forwarding	00191b-aea640	2	Yes	No
24	100/1000T	Auto	128	Disabled				

```
E3500# █
```

- A. Port 23 is connected to the Root Bridge.
- B. Port 23 is configured with a low Port Priority.
- C. Port 23 is connected to the Root Bridge through an intervening switch.
- D. Port 23 is connected to a switch that does not support Spanning Tree.

Answer: C

6.You must configure Multiple Spanning Tree Protocol (MSTP) on an HP E8212 zl switch and three E5406 zl switches.

What is required to ensure that all of the switches join the same MST region?

- A. The switches must be running the same software version.
- B. The switches must be configured to discard BPDUs from switches using STP or RSTP.
- C. Bridge Priorities on all switches must be configured so that each MST instance has a different Root Bridge.
- D. The switches must be configured with identical MST config-names, config-revisions, and VLAN-to-instance mappings.

Answer: D

Explanation:

MST region

A multiple spanning tree region (MST region) consists of multiple devices in a switched network and the network segments among them.

These devices have the following characteristics:

- All are MSTP-enabled
- They have the same region name
- They have the same VLAN-to-instance mapping configuration
- They have the same MSTP revision level configuration
- They are physically linked with one another

7.While examining switch configurations at a customer site, you notice that an edge switch serving a single office is the Root Bridge in a single-instance Spanning Tree. This has led to the development of inefficient forwarding paths because some switches are now forwarding traffic toward this switch and away from the network core.

What is an accurate explanation for this finding?

- A. The two switches are configured for different Spanning Tree Protocols.
- B. The core switch is configured to support edge ports.
- C. The edge switch is running a newer software version than the core switch.
- D. The core switch is configured with a higher Bridge Priority value than the edge switch.

Answer: D

Explanation:

The priority of a device determines whether it can be elected as the root bridge of a spanning tree. A lower value indicates a higher priority.

8.After configuring MSTP on HP switches at a customer site, you learn that users in VLAN 44 can no longer access a server that was available immediately before Spanning Tree was enabled. Which statement explains this situation?

- A. The server and the users are connected to switches in different MST regions.
- B. The edge switches that support users in VLAN 44 do not support MSTP.
- C. There is a break in the VLAN 44 forwarding path.
- D. The switches are not all configured with the same Spanning Tree Protocol.

Answer: C

9.The output of show spanning-tree instance 4 on three HP E5406 zl Series switches indicates that all three switches are the Root of MST instance 4. What is a possible explanation of this result?

- A. The switches have identical Bridge Priorities.
- B. The switches have different MST configuration revisions.
- C. The switches are running different software versions.
- D. The switches have identical Port Priorities for ports associated with the instance.

Answer: B

Explanation:

MST region

A multiple spanning tree region (MST region) consists of multiple devices in a switched network and the network segments among them.

These devices have the following characteristics:

- All are MSTP-enabled
- They have the same region name
- They have the same VLAN-to-instance mapping configuration
- They have the same MSTP **revision level** configuration
- They are physically linked with one another

10.What is the process for installing an HP PCM+ Remote Client?

- A. add the workstation's IP address to the update list on a PCM+ Remote Agent
- B. download software from the PCM+ server
- C. download a client installer from the HP website
- D. select "Client" instead of "Server" in PCM+ installer

Answer: B

Explanation:

Installing Remote Clients

...

- Start a Web browser such as Microsoft Internet Explorer on the computer where the Client will be installed, and enter the IP address of the PCM Server followed by a colon and the port ID 8040. For example, if the IP address of the PCM Server is 10.15.20.25, enter the URL <http://10.15.20.25:8040>
- In the HP ProCurve Manager v3 Available Downloads window, click Download the PCM remote client

11.Which plug-ins are available to enhance HP PCM+ functionality? (Select three.)

- A. Device Inventory Manager
- B. Network Immunity Manager
- C. Identity Driven Manager
- D. Access Control Manager
- E. Storage Network Manager
- F. Mobility Manager
- G. Custom Device Import Manager

Answer: BCF

Explanation:

- Identity Driven Manager (IDM): Add-on Module for PCM+; contains Intranet Network Access Security using 802.1X; compatible to Microsoft Network Access Protection (NAP) since Version IDM V2.3.
- Network Immunity Manager (NIM): Add-On Module for PCM+ v2.2 and above; contains Intranet Intrusion Detection and Network Behavior Anomaly Detection (NBAD) using sFlow.
- ProCurve Mobility Manager (PMM) : Add-on Module for PCM+; contains Element Management for ProCurve Access Points (420/520/530) starting from Version PMM V1; WESM Modules and Radio Ports are supported since Version PMM V2. Since PMM v3, the MSM Access Points and Controllers are now supported.

12.Which features are available after upgrading from HP PCM to HP PCM+? (Select three.)

- A. automatic discovery
- B. VLAN management
- C. device monitoring
- D. traffic monitoring

- E. scheduled software updates
- F. network topology mapping

Answer: BDE

Explanation:

HP ProCurve Manager Plus Features

The ProCurve Manager Plus (PCM+) package includes all of the functionality of PCM, along with advanced functionality that can dramatically improve the performance of an IT organization.

- *Network Traffic Analysis*
- *VLAN Management*
- Configuration Management
- Group and Policy Management
- *Device firmware updates*

13. At a customer site, an HP PCM+ server does not automatically discover any manageable devices except those on the subnet where the server resides.

Which configuration step is necessary to enable wider discovery?

- A. Define a custom group for each subnet with discoverable devices.
- B. Update the SNMP community names on all undiscovered devices.
- C. Add all subnets with discoverable devices to the Managed Subnets list.
- D. Install a PCM+ Remote Agent on all subnets with discoverable devices.

Answer: C

Explanation:

Initially, discovery works only for devices on the same subnet as the Discovery starting device. Once you have started PCM, you can add subnets and devices on your network to the Managed subnets list.

14. In HP PCM+, which privilege is only available to users with the Administrator profile?

- A. manage all devices
- B. manage software updates
- C. manage agents
- D. manage users

Answer: D

15. Port B24 on an HP E5400 zl Series switch is a tagged member of VLAN 101. Ports B21, B22, and B23 are at default settings.

What is the result of the following command?

Switch (config)# trunk B21-B24 trk1

- A. The trunk will automatically become a member of VLAN 101 and of all other VLANs configured for ports B21 through B24.
- B. Port B24 will not be included in the trunk until the trunk is made a tagged member of VLAN 101.
- C. Port B24 will not forward traffic for VLAN 101 because the trunk has not been made a member of VLAN 101.
- D. Port B24 will continue to forward traffic for VLAN 101, but other ports in the trunk will not.

Answer: C

Explanation:

By default, a trunk port carries only VLAN 1.

16.What is the effect of the following command entered at the CLI of an HP E5400 zl Series switch at default settings?

Switch (config) # trunk a20-a24 trk4

- A. A static LACP link is defined.
- B. A trunk is defined with no protocol.
- C. trk4 can carry traffic for multiple VLANs.
- D. A dynamic LACP link is defined.

Answer: B

Explanation:

Настройка статического транка

sw(config)# trunk 21-25 trk1 trunk

После того как порты добавлены в трнк, в настройках конфигурируетимя транка, например ssas

17.What is the default protocol when a link aggregation group is defined on an HP A-Series switch?

- A. no protocol
- B. static LACP
- C. dynamic LACP
- D. HP Port Trunking

Answer: A

18.By default, which criteria are used for load-sharing of Layer 2 traffic over aggregated links configured on HP A-Series switches?

- A. LACP flow classifiers
- B. ingress port
- C. source and destination MAC address
- D. source and destination IP address

Answer: C

19.What is the effect of the following command, entered at the CLI of an HP A9500 switch?

[A9500-GigabitEthernet2/0/1] stp root-protection

- A. The switch will listen for Spanning Tree BPDUs only on port 2/0/1.
- B. The switch will maintain 2/0/1 as its Root Port regardless of changes in the Spanning Tree topology.
- C. The switch will transition instantly to Root if it stops receiving BPDUs through port 2/0/1.
- D. The switch will not allow another switch to promote itself as Root on port 2/0/1.

Answer: D

20.You must configure link aggregation on an HP A-Series switch.

Which view should you enter to create the link aggregation group?

- A. user
- B. LAG
- C. system
- D. interface

Answer: C

Explanation:

Configuring a dynamic aggregation group

1. Enter system view system-view

...

Configuring a static aggregation group

1. Enter system view system-view

...