

IT 认证电子书



质 量 更 高 服 务 更 好

半年免费升级服务

<http://www.itrenzheng.com>

Exam : HP0-Y46

**Title : Implementing HP Network
Technologies**

Version : V8.02

1.What are HP Cloud Maps?

- A. HP software that automates routine IT tasks within a cloud environment
- B. HP business best practices that help organizations transition from traditional computing to cloud computing
- C. HP templates that make applications such as Oracle and Microsoft SharePoint ready for push-button deployment
- D. HP information management technology that helps users analyze location-based data often found in large data sets

Answer: C

Explanation:

Reference: <http://www8.hp.com/us/en/business-solutions/solution.html?compURI=1216661#.Uin7SGQS2Qk> (see the bulleted points on the page)

2.HOTSPOT

Match each IMC module to the correct description.

Implements policies for environments that support "bring your own device" (BYOD)

User Behavior Module (UBM) ▼

User Behavior Module (UBM)
Service Operation Manager (SOM)
Endpoint Admission Defense (EAD)
User Access Manager (UAM)
Branch Intelligent Management Software (BIMS)

Prevents devices infected with malware from spreading the infection to other devices on the network

User Behavior Module (UBM) ▼

User Behavior Module (UBM)
Service Operation Manager (SOM)
Endpoint Admission Defense (EAD)
User Access Manager (UAM)
Branch Intelligent Management Software (BIMS)

Detects and eliminates threats in HTTP, FTP, and SMTP connections

User Behavior Module (UBM) ▼

User Behavior Module (UBM)
Service Operation Manager (SOM)
Endpoint Admission Defense (EAD)
User Access Manager (UAM)
Branch Intelligent Management Software (BIMS)

Securely manages customer premise equipment (CPE) in wide area networks (WANs)

User Behavior Module (UBM) ▼

User Behavior Module (UBM)
Service Operation Manager (SOM)
Endpoint Admission Defense (EAD)
User Access Manager (UAM)
Branch Intelligent Management Software (BIMS)

Helps manage the entire IT lifecycle

User Behavior Module (UBM) ▼

User Behavior Module (UBM)
Service Operation Manager (SOM)
Endpoint Admission Defense (EAD)
User Access Manager (UAM)
Branch Intelligent Management Software (BIMS)

Answer:

Implements policies for environments that support "bring your own device" (BYOD)

User Behavior Module (UBM) ▼

- User Behavior Module (UBM)
- Service Operation Manager (SOM)
- Endpoint Admission Defense (EAD)
- User Access Manager (UAM)
- Branch Intelligent Management Software (BIMS)

Prevents devices infected with malware from spreading the infection to other devices on the network

User Behavior Module (UBM) ▼

- User Behavior Module (UBM)
- Service Operation Manager (SOM)
- Endpoint Admission Defense (EAD)
- User Access Manager (UAM)
- Branch Intelligent Management Software (BIMS)

Detects and eliminates threats in HTTP, FTP, and SMTP connections

User Behavior Module (UBM) ▼

- User Behavior Module (UBM)
- Service Operation Manager (SOM)
- Endpoint Admission Defense (EAD)
- User Access Manager (UAM)
- Branch Intelligent Management Software (BIMS)

Securely manages customer premise equipment (CPE) in wide area networks (WANs)

User Behavior Module (UBM) ▼

- User Behavior Module (UBM)
- Service Operation Manager (SOM)
- Endpoint Admission Defense (EAD)
- User Access Manager (UAM)
- Branch Intelligent Management Software (BIMS)

Helps manage the entire IT lifecycle

User Behavior Module (UBM) ▼

- User Behavior Module (UBM)
- Service Operation Manager (SOM)
- Endpoint Admission Defense (EAD)
- User Access Manager (UAM)
- Branch Intelligent Management Software (BIMS)

Explanation:

Implements policies for environments that support 'bring your own device' (BYOD) – User access manager (UAM)

Prevents devices infected with malware from spreading the infection to other devices on the network – Endpoint Admission Defense (EAD)

Detects and eliminates threats in HTTP, FTP, SMTP connections – User Behavior Module

Securely manages customer premise equipment (CPE) in wide area networks (WANs) – Branch Intelligent Management Software (BIMS)

Helps manage the entire IT lifecycle – Service operation Manager (SOM)

3.Which FlexArchitecture component uses Virtual Connect in blade server systems?

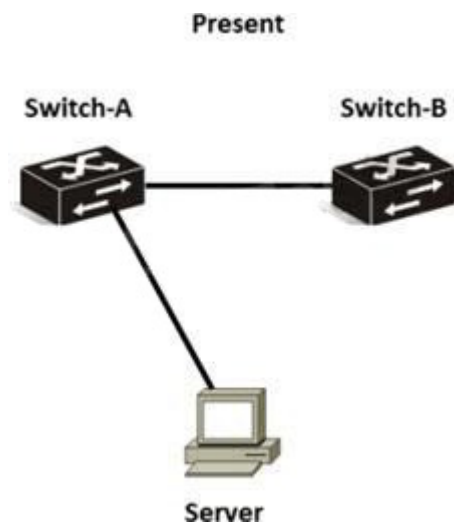
- A. FlexFabric
- B. FlexDataCenter
- C. FlexCampus
- D. FlexManagement

Answer: A

Explanation:

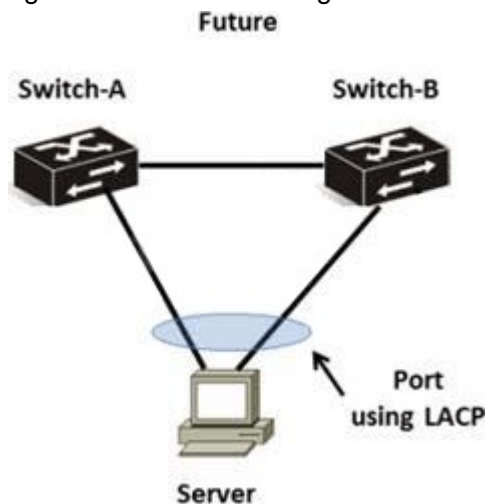
Reference: http://h18004.www1.hp.com/products/quickspecs/13652_div/13652_div.pdf

4.Refer to the network exhibit.



A network administrator has a server with a single link to the network

The company is concerned about redundancy and wants to implement a solution like that shown in the right-hand side of the diagram.



Which solution meets the company's needs?

- A. HP Comware or HP Provision switches using IRF
- B. HP Comware switches using IRF only
- C. HP Comware switches using meshed IRF or meshed stacking
- D. HP Comware switches using distributed trunking only
- E. HP Comware switches using distributed trunking or IRF

Answer: E

5.A network administrator views this message on the console of an HP Comware switch:

```
%Apr 29 13:22:54:969 2012 Comware-2 RM/3/RMLOG:OSPF-NBRCHANGE: Process 1, Neighbor  
10.1.100.1(Vlan-interface100) from Loading to Full
```

What is the significance of this message?

- A. The switch has shared routes with the DR

- B. The switch has become the BDR
- C. The switch has received routes from a DROTHER
- D. The switch has become the DR

Answer: B

6.Which statements are correct about HP StoreOnce Backup? (Select two.)

- A. It is a modular, branch-in-a-box solution that reduces the cost of remote installations.
- B. It provides high-speed data backup using a 3U rack enclosure with multiple tape arrays.
- C. It provides long term data retention using tape backup libraries with LTO-6 technology.
- D. It reduces bandwidth and storage media use with deduplication technology.
- E. It transfers only unique data across the network and stores it on the remote backup devices.

Answer: C,D

7.Which additional OSPF states does an OSPF router go through when forming an adjacency with a DR or BDR that it does not go through with a DROTHER? (Select three.)

- A. init state
- B. down state
- C. two-way state
- D. full state
- E. loading state
- F. exchange state

Answer: D,E,F

Explanation:

The correct answers are D, E and F. Choices a, d, and e are incorrect because an OSPF router will go through these three states with all OSPF routers: DROTHERs, DRs, and BDRs

8.Which Software-Defined Network (SDN) layer includes HP Provision and HP Comware switches?

- A. application
- B. operational
- C. control
- D. infrastructure

Answer: D

Explanation:

Reference:

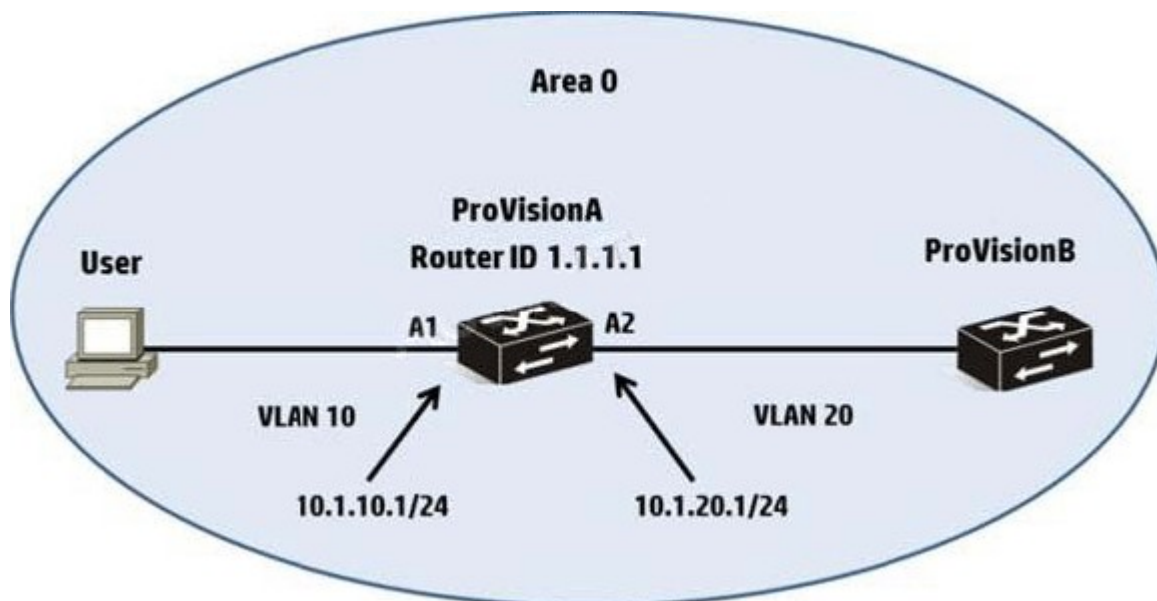
<http://h17007.www1.hp.com/us/en/networking/solutions/technology/sdn/index.aspx#.UirynGQS2Qk>
(refer to the diagram)

9.Which modules provide connectivity for blade servers installed in the HP BladeSystem c-Class enclosure to external switches? (Select two.)

- A. Virtual Connect module
- B. HP 6120XG module
- C. 8200zl module
- D. MSR900 module
- E. 5830AF module

Answer: A

10.Refer to the network exhibit.



A network administrator needs to ensure that no adjacency is formed with the User device. Based on the topology shown in the exhibit, which configuration successfully configures OSPF for ProVisionA?

- A ☐ ip routing
ip router-id 1.1.1.1
router ospf
area 0
exit
vlan 10
ip ospf area 0
ip ospf passive
exit
vlan 20
ip ospf area 0
exit
- B ☒ ip routing
ip router-id 1.1.1.1
router ospf
area 0
vlan 10 area 0
vlan 20 area 0
vlan 10 passive
exit
- C ☐ ip routing
router ospf 1.1.1.1
area 0 vlan 10
area 0 vlan 20
passive-interface vlan 10
exit
- D ☐ router ospf router-id 1.1.1.1
area 0
exit
vlan 10
ip ospf area 0
ip ospf passive
exit
vlan 20
ip ospf area 0
exit

- A. Option A
B. Option B
C. Option C
D. Option D

Answer: B

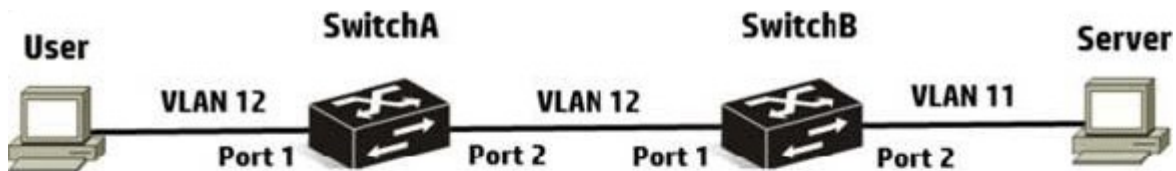
11. In which Flex Architecture modules would MPLS and DSL connections commonly be terminated?
(Select two.)

- A. FlexCampus
B. FlexRemote

- C. FlexWAN
- D. FlexDataCenter
- E. FlexBranch

Answer: A,E

12.Refer to the network and ARP table exhibit.



ARP Table

Device	IP Address	MAC Address
User	10.1.12.12	0001.0012.0012
SwitchA	10.1.12.2	0001.0012.0002
SwitchB	10.1.12.1	0001.0012.0001
SwitchB	10.1.11.1	0001.0011.0002
Server	10.1.11.11	0001.0011.0011

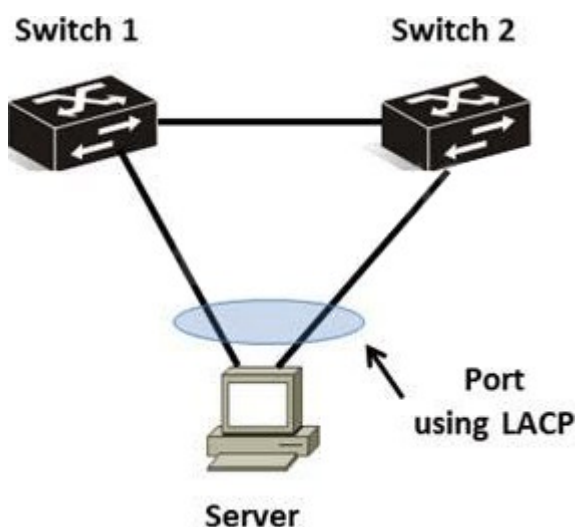
The user on the left side of the exhibit wants to build a connection to the server on the right. Assume that SwitchA and SwitchB are HP Comware switches.

For which IP address does the user generate an ARP?

- A. The user generates an ARP for the MAC address that corresponds to 10.1.11.1.
- B. The user generates an ARP for the MAC address that corresponds to 10.1.12.1.
- C. The user generates an ARP for the MAC address that corresponds to 10.1.11.11.
- D. The user generates an ARP for the MAC address that corresponds to 10.1.12.2.

Answer: C

13.Refer to the network exhibit.



The external server shown in the exhibit requires redundancy that uses link aggregation with LACP. Which solution meets this criteria?

- A. Comware switches that use IRF or Provision switches, which use distributed trunking
- B. Comware switches that use distributed trunking, or Provision switches that use meshed stacking
- C. Comware switches that use IRF or Provision switches, which use meshed stacking
- D. Comware or Provision switches that use distributed trunking

Answer: D

Explanation:

The correct answer is d. Choice a is incorrect because meshed stacking does not support distributed LACP. Choices b and c are incorrect because Comware switches do not support distributed trunking.

14.Which item is different between the IEEE 802.3z and 802.3ae standards?

- A. Duplexing
- B. Link aggregation
- C. Support of copper and fiber cabling
- D. Frame sizes

Answer: A

15.A network administrator is expanding part of the data center in a hospital network. Three new racks of equipment need to be added, with an HP Comware 5820 series switch at the top of each rack. The Comware 5820 series switch needs to connect back to two core Comware 12500 switches using 10Gb connections. The distance between the three racks and the Comware 12500 switches is approximately 40 meters; however, the network administrator is concerned about electromagnetic and other types of interferences to electrical signals.

Which solutions protect against interference and are cost-effective for this scenario? (Select two.)

- A. 10GBase-2R
- B. 10GBase-SR
- C. 10GBase-ER
- D. 10GBase-LX4
- E. 10GBase-T

Answer: D,E