

IT 认证电子书



质 量 更 高 服 务 更 好

半年免费升级服务

<http://www.itrenzheng.com>

Exam : IBMSPSSMPRO

**Title : IBM SPSS Modeler
Professional Certification**

Version : DEMO

1.Which key items must be identified before a data mining project is started? (Select all that apply)

- A.A business problem or question
- B.Data quality problem
- C.Available data
- D.Available expertise on the data and business

Answer: B

2.Given the following Output Table to create a select node which includes vehicles from both groups A and B, click on A and on B (as shown) and select from the menu.?

	Policyholder age	Vehicle group	Vehicle age	Average cost of claims	Number of claims
1	17-20	A	0-3	259	8
2	17-20	A	4-7	262	6
3	17-20	A	8-9	133	4
4	17-20	A	10+	160	1
5	17-20	B	0-3	372	10
6	17-20	B	4-7	249	26
7	17-20	B	8-9	280	1
8	17-20	B	10+	11	1
9	17-20	C	0-3	199	9
10	17-20	C	4-7	265	13
11	17-20	C	8-9	179	1
12	17-20	C	10+	\$null	0
13	17-20	D	0-3	763	3
14	17-20	D	4-7	880	2
15	17-20	D	8-9	\$null	0
16	17-20	D	10+	\$null	0
17	21-24	A	0-3	302	10
18	21-24	A	4-7	194	31
19	21-24	A	8-9	135	10
20	21-24	A	10+	106	4

- A.Generate ...- Select Node“Or”)
- B.Generate ...- Select Node“And”)

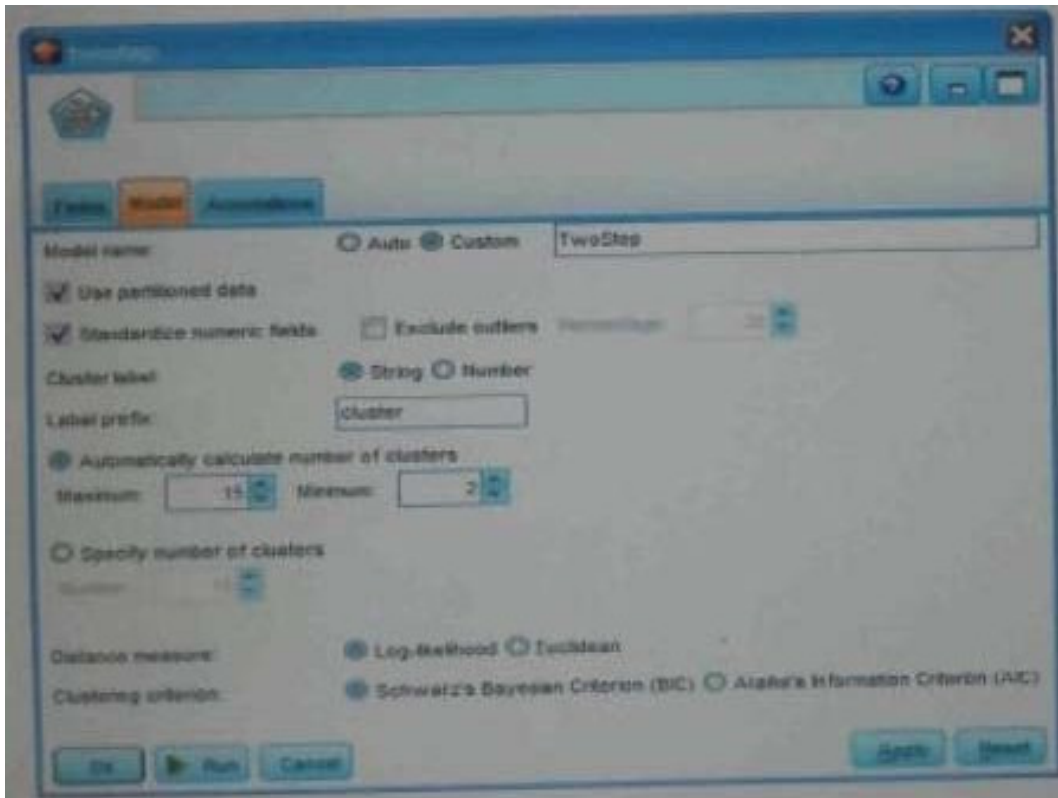
Answer: B

3.Which nodes are best suited for revealing relationship between categorical (nominal, ordinal) fields? (Select all that apply)

- A.Means node
- B.Matrix node
- C.Distribution node
- D.Table node

Answer: A,C

4.In two step node shown below, what does standardize numeric fields mean?



- A. Eliminate outliers to improve results.
- B. Transform the numeric fields to a scale with a mean of zero and variance of one.
- C. Limit the number of created clusters.
- D. Use only the numeric fields scale.

Answer: B

5. Which statement is correct regarding the sample node dialogue shown below?



- A.It will select every 60th record from the data.
- B.It will randomly select exactly 60% of all the record.
- C.It will select approximately 60% of the records.This is, each record will have a 60% probability of being selected.
- D.It will always draw the same 60% of records each time this sample node is run.

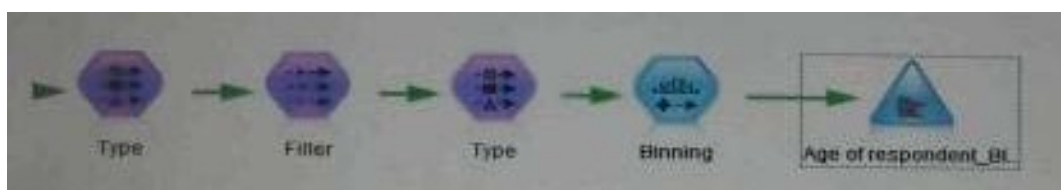
Answer: C

6.Which statements are true of the Feature Selection node? (Select all that apply)

- A.Input fields can be selected on the basis of importance.
- B.The Target fields can be either categorical or continuous measurement.
- C.The Input fields can only be continuous measurement.
- D.When a target field is not specified then it will create a generalized output.

Answer: A,B

7.What is the reason that the three nodes in the following figure have been colored purple?



- A.The purple nodes were pushed back to the database.
- B.IBM SPSS Modeler is running out of memory.

- C.The purple nodes will be executed later.
- D.There are multiple type nodes in a row.

Answer: A

8.On the PCA/Factor node when doing a Principle Component analysis without rotation, the values reported on the Component Matrix represents the correlation between each field and factor.

- A.True
- B.False

Answer: B

9.As a default, the Evaluation node provides a graph of the first category of your target field.To change the category, you need to modify which sector?



- A.User defined hit
- B.User defined score
- C.Include business rule
- D.Export results to file

Answer: A

10.Which Model nodes can have a categorical target field? (Select all that apply)

- A.Discriminant node
- B.Linear node
- C.Neutral Net node
- D.C & R Tree node

Answer: A,B