

# IT 认证电子书



质 量 更 高 服 务 更 好

半年免费升级服务

<http://www.itrenzheng.com>

**Exam** : **4A0-114**

**Title** : Nokia Border Gateway  
Protocol Fundamentals for  
Services

**Version** : DEMO

1.Click the exhibit.



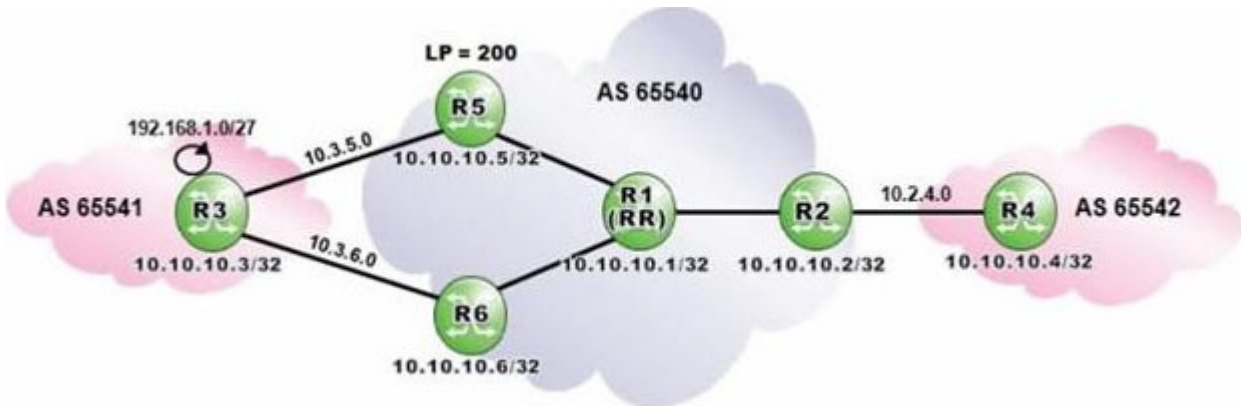
Which of the following is a valid confederation configuration for Router R2?

- A. R2>config>router# info  
-----  
autonomous-system 65540  
confederation 65540 members 65541 65542
- B. R2>config>router# info  
-----  
autonomous-system 65542  
confederation 65540 members 65541
- C. R2>config>router# info  
-----  
autonomous-system 65542  
confederation 65540 members 65541 65542
- D. R2>config>router# info  
-----  
autonomous-system 65540  
confederation 65542 members 65541

- A. Option A
- B. Option B
- C. Option C
- D. Option D

**Answer: C**

2.Click the exhibit.



Router R1 is a route reflector with clients R2, R5 and R6. Prefixes advertised by router R5 have a local preference of 200. Router R3 advertises the prefix 192.168.1.0/27 to routers R5 and R6. Assuming that none of the routers in AS 65540 is configured with "advertise-external", what is the expected output of "show router bgp routes" on router R5?

A. Flag Network

	LocalPref	MED
Nexthop As-Path	Path-Id	VPNLabel
u*>i 192.168.1.0/27 10.3.5.3 65541	200 None	None -

B. Flag Network

	LocalPref	MED
Nexthop As-Path	Path-Id	VPNLabel
u*>i 192.168.1.0/27 10.3.5.3 65541	None None	None -
i 192.168.1.0/27 10.10.10.5 65541	200 None	None -
i 192.168.1.0/27 10.10.10.6 65541	100 None	None -

C. Flag Network

	LocalPref	MED
Nexthop As-Path	Path-Id	VPNLabel
u*>i 192.168.1.0/27 10.3.5.3 65541	None None	None -
i 192.168.1.0/27 10.10.10.5 65541	200 None	None -

D. Flag Network

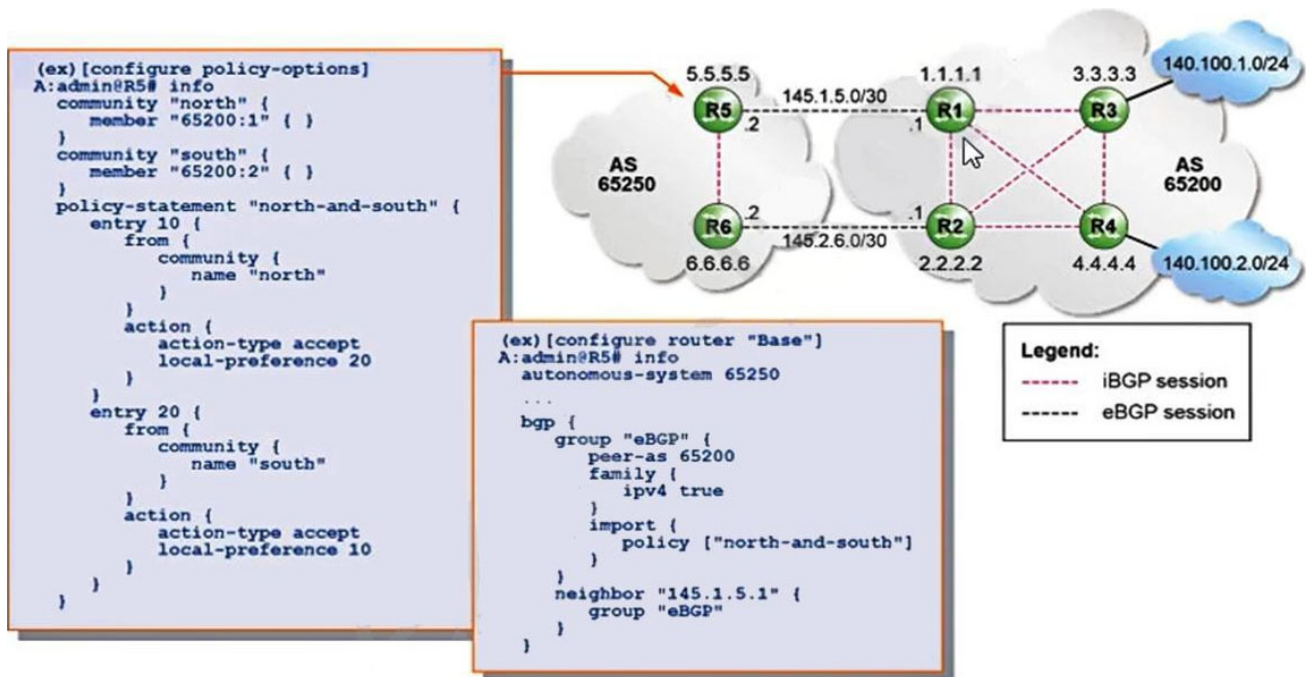
	LocalPref	MED
Nexthop As-Path	Path-Id	VPNLabel
u*>i 192.168.1.0/27 10.10.10.5 65541	200 None	None -
i 192.168.1.0/27 10.10.0.6 65541	100 None	None -

- A. Option A
- B. Option B
- C. Option C
- D. Option D

**Answer: C**

3.In the diagram, the BGP import policy "north-and-south" is applied to router R5. Router R1 advertises the prefix 140.100.1.0/24 with a community set to "65200:1".

Which of the following statements about how router R5 processes the received route update for prefix 140.100.1.0/24 is TRUE?



- A. The prefix is rejected.
- B. The prefix's local preference is set to 20.
- C. The prefix's community value is removed.
- D. The prefix's community value is modified to 65200:2.

**Answer: D**

4.Which of the following statements about BGP is FALSE?

- A. Peers need to be IP reachable to establish a BGP session.
- B. Route reflectors can reduce the number of iBGP sessions required.
- C. iBGP peers have to be adjacent to each other.
- D. The multihop parameter needs to be configured when eBGP peers are not adjacent to each other.

**Answer: C**

5.A BGP session is stuck in the "Connect" state.

Which of the following is the most likely reason?

- A. The remote BGP peer is properly configured but the local router is not.
- B. The local router is properly configured but the remote BGP peer is not.
- C. The BGP protocol is administratively disabled on the local router.
- D. The BGP protocol is administratively disabled on the remote BGP peer.

**Answer: B**