

IT 认证电子书



质 量 更 高 服 务 更 好

半年免费升级服务

<http://www.itrenzheng.com>

Exam : **642-143**

Title : **Communications IP
Telephony Express Exam**

Version : **DEMO**

1.You want to classify and mark the packets that are received by a router from a Catalyst 2900 XL. Your supervisor wants you to retag the packets at the router. The connection from the switch to the router must be a trunk in order to carry the Layer 2 CoS markings. The router interface is a Fast Ethernet interface. Which three steps will you use to correctly map 802.1p to DSCP on this L2 switch to accomplish this task? (Choose three.)

- A.router(config)#class-map match-any CoS5 router(config-cmap)#match cos 5
- B.router(config)# policy-map dot1p-to-DSCP router(config-pmap)# class CoS5 router(config-pmap-c)#set dot1p dscp AF11
- C.router(config)# interface fa0.1 router(config-subif)#encapsulation 802.1p router(config-subif)#service-policy input DSCP-to-CoS
- D.router(config)#class-map match-any 802.1p router(config-cmap)#match dscp 5
- E.router(config)# policy-map CoS-to-DSCP router(config-pmap)# class CoS5 router(config-pmap-c)#set ip dscp AF11
- F.router(config)# interface fa0/0.1 router(config-subif)#encapsulation isl 1 router(config-subif)#service-policy input CoS-to-DSCP

Correct:A E F

2.The Clinton Howe Weights and Measures Company wants to send CDRs to a syslog server. Which two options are required? (Choose two.)

- A.The CDR collection must be enabled from the CLI.
- B.The syslog server IP address must be configured using the logging command.
- C.The CDRs must be sent to the syslog server using the gw-accounting syslog command.
- D.The logging file must be initialized using the logging buffered command.

Correct:B C

3.Which protocol is required for an IP Phone to register with Cisco CallManager Express?

- A.TFTP
- B.DHCP
- C.NTP
- D.FTP
- E.AAA

Correct:A

4.The Acme Rocket Corporation is integrating their existing Octel voice mail system with Cisco CallManager Express. The Octel voice mail system has four ports and a voice mail pilot point of 53222. How should the CallManager Express be configured to support this integration?

- A.A separate VoIP dial peer needs to be configured for the four pilot point numbers.
- B.Four dial peers need to be configured with the same pilot point number.
- C.Four ephone-dns and four ephones need to be configured with the same pilot point number.
- D.Four ephones and four dial peers need to be configured with the same pilot point number.

Correct:B

5.A user dials 95551234. Which of the following configurations will send the digits 4085551234 to the PSTN?

- A.dial-peer voice 1 pots destination-pattern 9555? prefix 408 port 1/0:23
- B.dial-peer voice 1 pots destination-pattern 9555? forward-digits 10 port 1/0:23
- C.num-exp 555? 408555? dial-peer voice 1 pots destination-pattern 9555? port 1/0:23
- D.translation-rule 5 rule 1 ^9555 408555 dial-peer voice 1 pots destination-pattern 9555?

translate-outgoing called 5 forward-digits all port 1/0:23

Correct:D

6.You wish to verify that the pilot point number has been configured correctly in your CUE module. Using the show ccn trigger command provides the following output: cue-10-0-0# show ccn trigger Name: 6800 Type: SIP Application: voicemail Locale: en_US Idle Timeout: 5000 Enabled: yes Maximum number of sessions: 8 Name: 6700 Type: SIP Application: autoattendant Locale: en_US Idle Timeout: 5000 Enabled: yes Maximum number of sessions: 8 cue-10-0-0# What pieces of information can you derive from this output? (Choose two.)

- A.The voice-mail pilot point number is 6800.
- B.The number of ports available is 16.
- C.The idle timeout is 5 seconds.
- D.The operator can be reached at extension 6800.
- E.The voice-mail application is enabled.

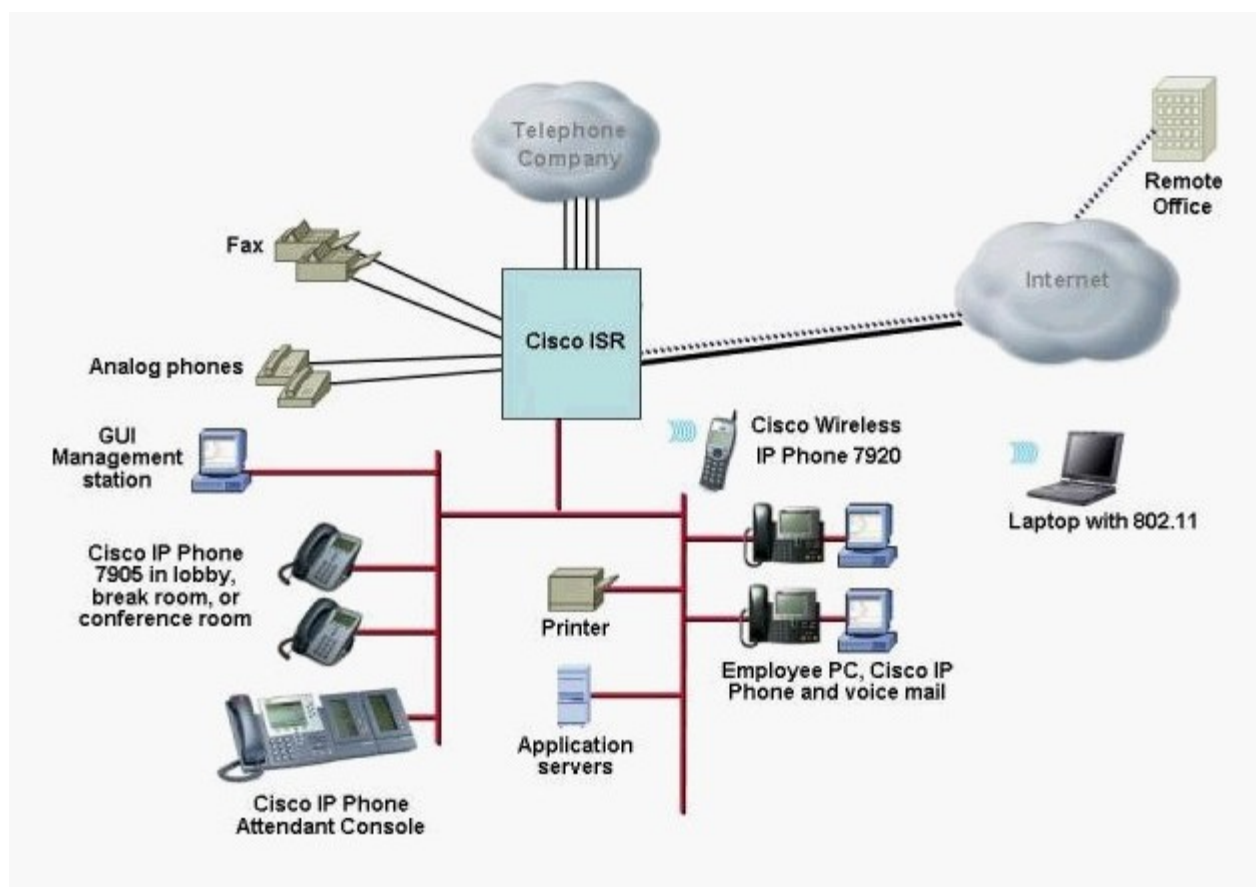
Correct:A E

7.The system administrator at Knox Booksellers wants to connect to the PSTN via FXO port 1/0/0. The number assigned to this line by the telco is 408-555-1212. Which configuration will route all incoming calls to a shared line with an extension of 2000?

- A.voice-port 1/0/0 description 408 555-1999 connection plar 4085551999 2000
- B.voice-port 1/0/0 description FXO 4085551999 connection plar 2000
- C.voice-port 1/0/0 description FXO 4085551999 translate incoming-called 4085551999 2000
- D.voice-port 1/0/0 description 408 555-1999 connection plar ephone-dn 2000

Correct:B

8.In this diagram, Cisco CallManager Express is being integrated with a SIP network. Which two integration principles apply? (Choose two.)



- A.The SIP server must be configured for E.164 numbers that are going to register with the Cisco CallManager Express database.
- B.SIP support in IOS is a function of localized call processing integrated with CUE.
- C.Use the notify-based DTMF relay mechanism that is proprietary to Cisco.
- D.SIP support in dial peers is an IOS function.
- E.Use either the notify-based DTMF relay mechanism that is proprietary to Cisco or the RFC-based DTMF relay.

Correct:D E

9.Cisco CallManager Express is being implemented in a standalone environment with PSTN interfaces. Which two of these represent valid options for fax support? (Choose two.)

- A.Make the fax machine appear to be an SIP device by connecting it to an ATA.
- B.Make the fax machine appear to be an H.323 device by connecting it to an ATA.
- C.Make the fax machine appear to be an SCCP device by connecting it to an ATA.
- D.Connect the fax to an FXO port of the Cisco CallManager Express router.
- E.Connect the fax to an FXS port of the Cisco CallManager Express router.

Correct:C E

10.What are two main purposes of QoS marking? (Choose two.)

- A.Sort traffic into different service classes for QoS treatment.
- B.Signal network devices about which QoS mechanism should be employed to meet the requirements of a particular service class.
- C.Set fields in IP packets and identify packets as belonging to specific classes of service.
- D.Allow edge devices to select the QoS level on an application-by-application basis.

Correct: B C