

IT 认证电子书



质 量 更 高 服 务 更 好

半年免费升级服务

<http://www.itrenzheng.com>

Exam : **642-311**

Title : Cisco Optical SONET Exam
(SONET)

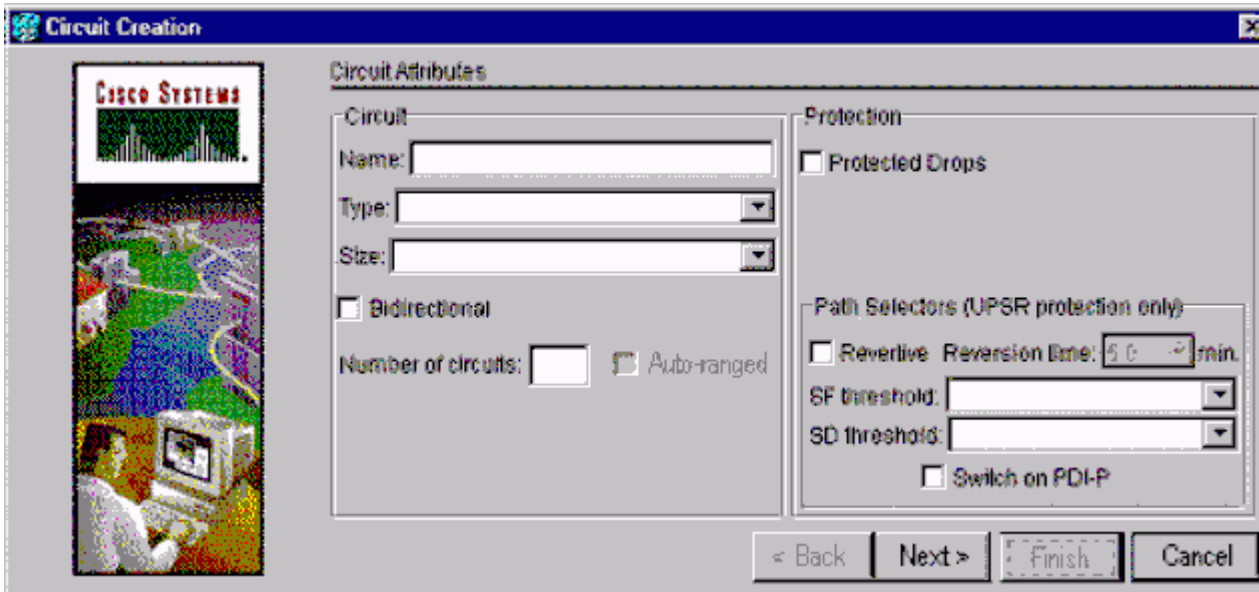
Version : DEMO

1. You are installing a Cisco ONS 15454 in a service provider site. A DS3 cable is to be connected to a digital cross-connect system. What is the maximum distance allowed between the two?

- A. 225 ft
- B. 450 ft
- C. 655 ft
- D. 900 ft

Correct: B

2. Click the Exhibit button. Within an ONS 15454, you are provisioning a circuit on an unprotected UPSR ring. In the exhibit, which two must you configure? (Choose two.)



- A. revertive
- B. circuit type
- C. circuit size
- D. bidirectional
- E. protected drops
- F. switch on PDI-P

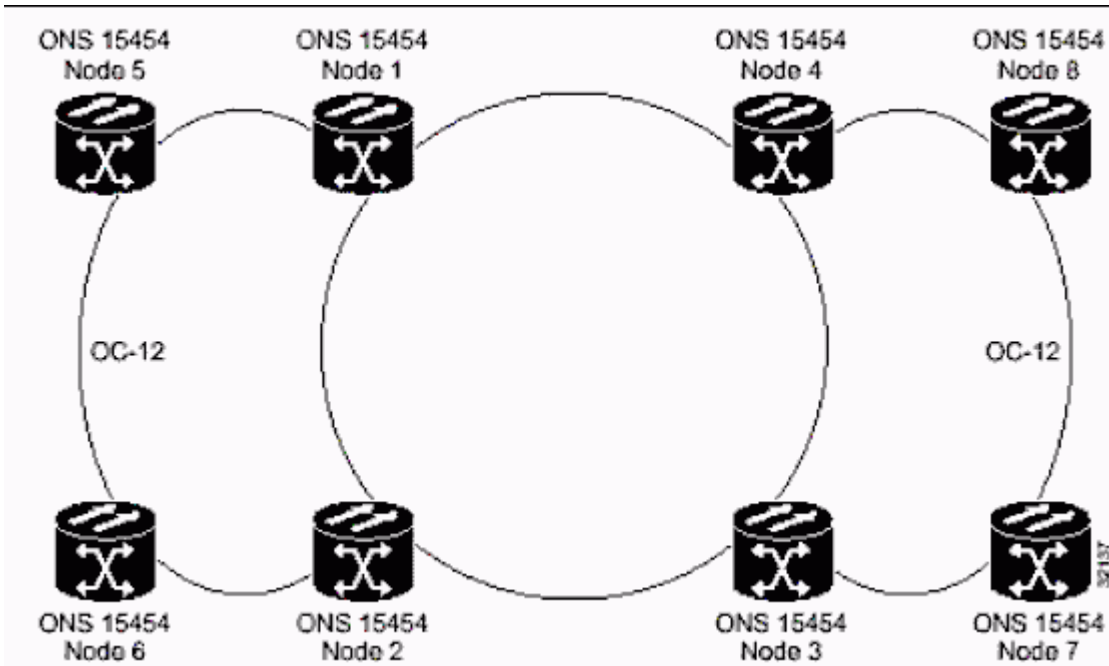
Correct: B C

3. With R4.0, how many total DCC tunnel connections can each ONS 15454 support using the TCC+ card?

- A. 10
- B. 32
- C. 64
- D. 84
- E. 96

Correct: B

4. Click the Exhibit button. A customer has several interconnected core rings (see exhibit). They want to create several virtual rings utilizing their OC-192 backbone (nodes 1,2,3,4). What should you recommend?



- A.PPMN with BLSR rings
- B.PPMN with UPSR rings
- C.1:N protection on all core circuits
- D.multi-ring interconnect with BLSR rings

Correct:B

5.Which three timing modes are supported on the ONS 15454 shelf? (Choose three.)

- A.line timing
- B.loop timing
- C.internal timing
- D.through timing
- E.external timing

Correct:A C E