

IT 认证电子书



质 量 更 高 服 务 更 好

半年免费升级服务

<http://www.itrenzheng.com>

Exam : **642-821**

Title : CCNP's Building Cisco
Remote Access Networks
(BCRAN)

Version : DEMO

1. Single choice

Refer to the exhibit. Online Incorporated is an Internet game provider. The game service network has recently added an additional facility to connect to an already configured central site. As a remote site technician you will be required to configure the VPN connection at the remote site for secure communication between the central and remote LAN segments. Using the physical topology and the show output provided from the commands **show crypto isakmp policy**, **show crypto isakmp key**, **show crypto ipsec sa**, and **show crypto ipsec transform-set** on the central router, answer the following questions:

This item contains several questions that you must answer. In order to complete these questions, you may need to refer to a tool that is not currently visible, or access the topology that accompanies this scenario. To gain access to either the topology or the device tool, click on the button to left side of the screen that corresponds to the section you wish to access. When you are done using the tool you can return to your questions by clicking on the *Questions* button to the left.

1 Which authentication method must be configured for the IKE policy on the Remote router?

- 2 Remote(config-isakmp)# authentication rsa-sig
3 Remote(config-isakmp)# authentication rsa-encr
4 Remote(config-isakmp)# authentication pre-share
 Remote(config-isakmp)# hash md5
 Remote(config-isakmp)# hash sha

This item contains several questions that you must answer. In order to complete these questions, you may need to refer to a tool that is not currently visible, or access the topology that accompanies this scenario. To gain access to either the topology or the device tool, click on the button to left side of the screen that corresponds to the section you wish to access. When you are done using the tool you can return to your questions by clicking on the *Questions* button to the left.

1 Which key and address must be identified for the IKE policy in the crypto isakmp key global configuration command on the remote router? (Choose two.)

- 2 ispgames02
3 ispgames08
4 ispgames09
 192.168.12.5
 192.168.12.33
 192.168.12.37

This item contains several questions that you must answer. In order to complete these questions, you may need to refer to a tool that is not currently visible, or access the topology that accompanies this scenario. To gain access to either the topology or the device tool, click on the button to left side of the screen that corresponds to the section you wish to access. When you are done using the tool you can return to your questions by clicking on the *Questions* button to the left.

1 Which access-list statement would be used for identifying local and remote VPN traffic to be encrypted at the remote site?

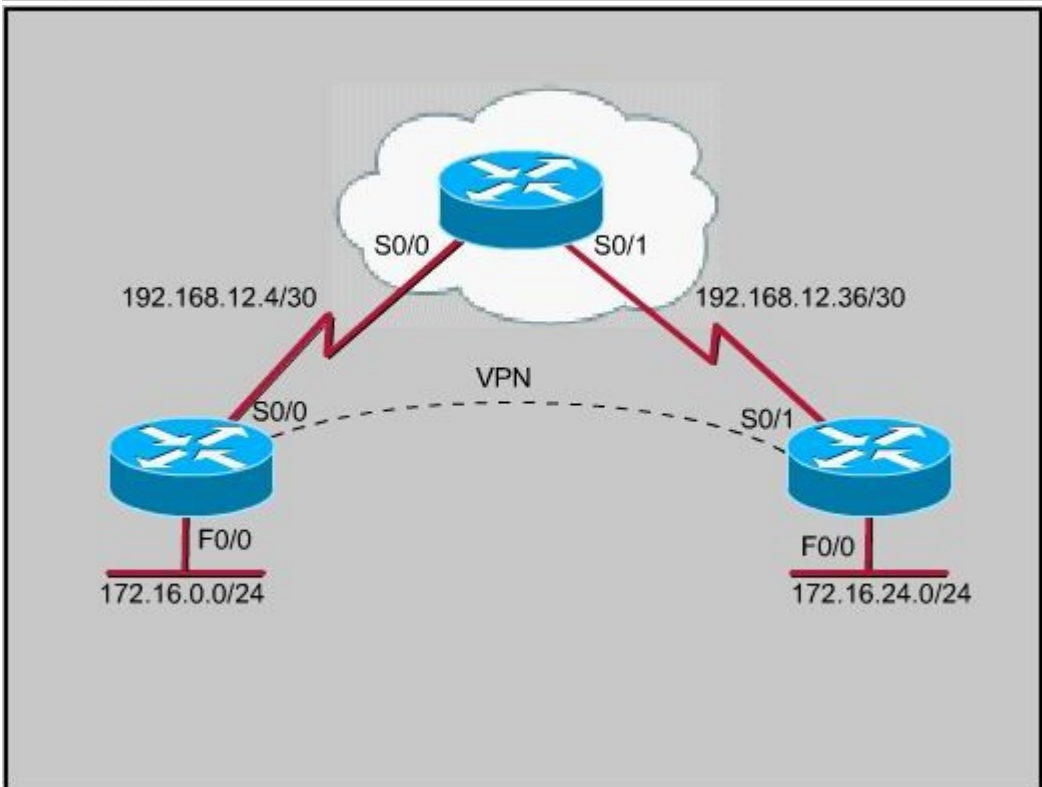
- 2 access-list 110 permit ip 172.16.0.0 0.0.0.255 172.16.24.0 0.0.0.255
3 access-list 110 permit ip 172.16.24.0 0.0.0.255 172.16.0.0 0.0.0.255
4 access-list 110 permit ip 192.168.12.4 0.0.0.3 192.168.12.36 0.0.0.3
 access-list 110 permit ip 192.168.12.36 0.0.0.3 192.168.12.4 0.0.0.3

This item contains several questions that you must answer. In order to complete these questions, you may need to refer to a tool that is not currently visible, or access the topology that accompanies this scenario. To gain access to either the topology or the device tool, click on the button to left side of the screen that corresponds to the section you wish to access. When you are done using the tool you can return to your questions by clicking on the *Questions* button to the left.

Which transform-set and peer address need to be configured within the IPSec policy on the remote router? (Choose two.)

- 1
- 2
- 3
- 4

- 192.168.12.5
- 192.168.12.37
- GAMES
- GAMEDB
- esp-des
- esp-null



```

Central# show crypto isakmp policy
Protection suite of priority 110
  encryption algorithm:  DES - Data Encryption Standard (56 bit keys).
  hash algorithm:        Secure Hash Standard
  authentication method: Pre-Shared Key
  Diffie-Hellman group:  #1 (768 bit)
  lifetime:              06400 seconds, no volume limit
Default protection suite
  encryption algorithm:  DES - Data Encryption Standard (56 bit keys).
  hash algorithm:        Secure Hash Standard
  authentication method: Rivest-Shamir-Adleman Signature
  Diffie-Hellman group:  #1 (768 bit)
  lifetime:              86400 seconds, no volume limit

Central# show crypto isakmp key
Hostname/Address      Preshared Key
192.168.12.9          ispgames02
192.168.12.13         ispgames03
192.168.12.17         ispgames04
192.168.12.21         ispgames05
192.168.12.25         ispgames06
192.168.12.33         ispgames08
192.168.12.37         ispgames09
192.168.12.41         ispgames10
192.168.12.45         ispgames11
192.168.12.49         ispgames12

Central# show crypto ipsec sa

```

```

interface: Serial0/0
  Crypto map tag: GAMES, local addr. 192.168.12.5

  local ident (addr/mask/prot/port): (172.16.0.0/255.255.255.0/0/0)
  remote ident (addr/mask/prot/port): (172.16.24.0/255.255.255.0/0/0)
  current_peer: 192.168.12.37
    PERMIT, flags={origin_is_acl,}
    #pkts encaps: 0, #pkts encrypt: 0, #pkts digest 0
    #pkts decaps: 0, #pkts decrypt: 0, #pkts verify 0
    #pkts compressed: 0, #pkts decompressed: 0
    #pkts not compressed: 0, #pkts compr. failed: 0, #pkts decompress failed: 0
    #send errors 0, #recv errors 0

  local crypto endpt.: 192.168.12.5, remote crypto endpt.: 192.168.12.37
  path mtu 1500, ip mtu 1500, ip mtu interface Serial0/0
  current outbound spi: 0

  inbound esp sas:

  inbound ah sas:

  inbound pcp sas:

Central# show crypto ipsec transform-set
Transform set GAMEDB: { esp-des }
  will negotiate = { Tunnel, },

```

2. Which two of the following events will occur when the router command `backup load 60 5` is used?

(Choose two.)

- A. The backup link activates when the primary link exceeds 60 percent of bandwidth.
- B. The backup link activates when the primary link exceeds 60 kbps.

- C. The backup link deactivates when the primary link falls to 5 percent bandwidth.
- D. The backup link deactivates when the combined load falls to 5 percent bandwidth.
- E. The backup link deactivates when the combined load falls to 5 kbps.

Answer: AD

3. Which three items are correct about the IPSec ESP security protocol? (Choose three.)

- A. Authentication is mandatory and the whole packet including the header is authenticated.
- B. Authentication is optional and the outer header is not authenticated.
- C. IP packet is expanded by transport mode:37 bytes(3DES) or 63 bytes(AES); tunnel mode:57 bytes(3DES) or 83 bytes(AES)
- D. IP packet is expanded by: transport mode 24 bytes; tunnel mode 44 bytes
- E. The ESP security protocol provides data confidentiality.
- F. The ESP security protocol provides no data confidentiality.

Answer: BCE

4. Given the configuration command shown in the exhibit, which statement is true?

```
Router(config-if)# ip tcp header-compression passive
```

- A. All incoming TCP packets will be compressed
- B. All outgoing TCP packets will be compressed
- C. Incoming TCP packets will be compressed only if outgoing TCP packets on the same interface are compressed
- D. Outgoing TCP packets will be compressed only if incoming TCP packets on the same interface are compressed
- E. All incoming and outgoing TCP packets will be compressed.

Answer: D

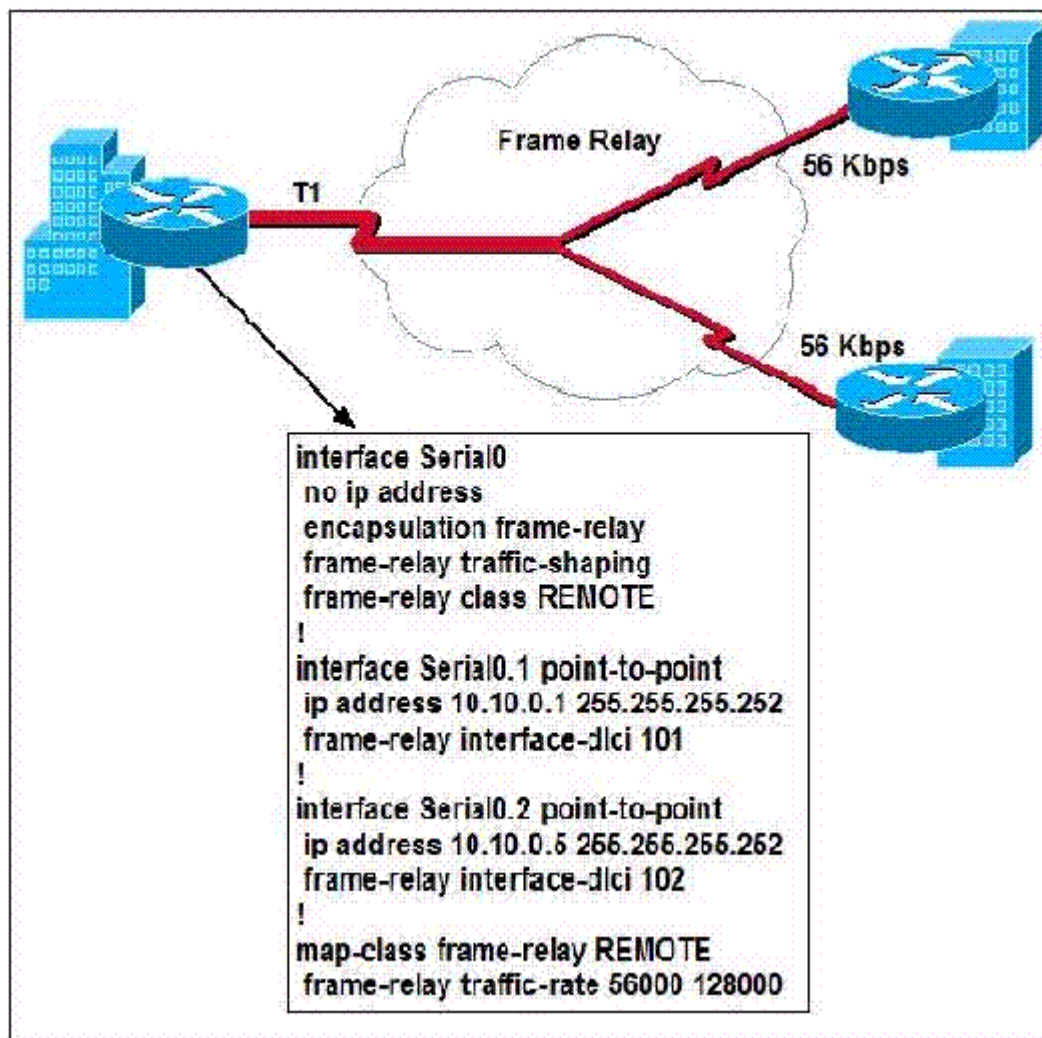
5. Based on the above configuration, which statement is true?

```
Router(config)# interface serial 1/1
Router(config-if)# backup interface bri0/0
Router(config-if)# backup load 80 10
```

- A. The backup interface will be used when traffic reaches 80 kbps on the primary interface.
- B. The backup interface will be disabled when the combined load on the primary and backup interfaces is less than 10%
- C. The backup interface will be disabled when the combined load on the primary and backup interfaces is less than 80 kbps.
- D. The backup interface will be disabled when the load on the primary interface is less than 10%.
- E. The backup interface will be disabled when the load on the primary interface is less than 80 kbps.

Answer: B

6. What does the command `frame-relay traffic-rate 56000 128000` accomplish as configured on the indicated router?



- A. It enables the average and peak rate for traffic received on the interface.
- B. It enables the average and peak rate for traffic sent out a virtual circuit.
- C. It does nothing until the REMOTE class is assigned to a sub-interface.
- D. It configures the interface default bandwidth and peak rate for traffic sent.

Answer: B

7. Which IPSEC protocol negotiates security associations?

- A. AH
- B. ESP
- C. IKE
- D. SSH

Answer: C

8. Which two queuing methods allow for strict priority queuing of delay sensitive applications? (Choose two.)

- A. Flow-based WFQ
- B. Class-based WFQ
- C. LLQ
- D. CQ
- E. PQ

Answer: CE

9. Refer to the output of the debug frame-relay lmi command shown in the graphic, what is the status of DLCI 100?

```
Serial10/0(in): Status, myseq 72
RT IE 1, length 1, type 0
KA IE 3, length 2, yourseq 73, myseq 72
PVC IE 0x7, length 0x3, dlcid 100, status 0x0
PVC IE 0x7, length 0x3, dlcid 200, status 0x2
Serial10/0(out): StEnq, myseq 73, yourseen 73, DTE up
datagramstart = 0x1346F34, datagramsize = 14
FR encap = 0x00010308
00 75 95 01 01 01 03 02 49 49
```

- A. active
- B. init
- C. inactive
- D. down
- E. deleted

Answer: C

10. Which two statements are true about the use of the backup load 65 10 command on a router? (Choose two.)

- A. The secondary line will terminate when the load of the primary line drops to 10% of the bandwidth of the primary line.
- B. The secondary line will terminate when the aggregate load of the primary and backup lines drops to 10% of the primary line bandwidth

- C. The secondary line will come up 10 seconds after traffic on the primary line reaches 65% of the bandwidth of the primary line.
- D. The secondary line will come up when the traffic on the primary line reaches 65% of the bandwidth of the primary line.
- E. The backup interface will come up 65 seconds after the primary link goes down.
- F. The secondary interface will terminate the connection 10 seconds after the primary link comes up.

Answer: BD

11. Which two commands assign multiple ISDN BRI interfaces to a single hunt group? (Choose two.)

- A. dialer-group
- B. multilink ppp
- C. interface dialer
- D. dialer hunt-group
- E. dialer rotary-group

Answer: CE

12. A network administrator would like to use an existing ISDN line as a backup for a Frame Relay line connected on interface serial0.

Which statement is correct based on the following configuration of the Cisco Router?

```
interface serial0
ip address 192.168.10.1 255.255.255.0
backup interface bri0
backup delay 5 10
interface bri0
ip address 192.168.11.2 255.255.255.0
dialer idle-timeout 900
dialer-group 1
```

- A. The ISDN BRI line will go to "standby" mode 900 seconds after the serial interface reactivates.
- B. The ISDN BRI line will go to "standby" mode 10 seconds after the serial interface reactivates.
- C. The ISDN BRI line will deactivate when the primary line reaches 10% utilization.

D. The ISDN BRI line will go to standby mode after 900 seconds, but will reactivate if the primary line reaches 10% utilization

Answer: B

13. Which statement is true about payload compression?

A. Payload compression can be used in conjunction with link compression.

B. The payload compression algorithm uses Predictor or STAC to compress traffic into another data link layer such as PPP.

C. Payload compression is appropriate for virtual network services such as Frame Relay and ATM.

D. With payload compression the complete packet is compressed and the switching information in the header is not available.

Answer: C

14. By default, what is the maximum percentage of bandwidth CBWFQ allocates for all classes of traffic?

A. 25

B. 50

C. 75

D. 90

Answer: C

15. What will happen to the priority queue if the queue is full and more priority queue traffic is matched?

A. Priority traffic will be restrained to its allocated queue size, and packets will be dropped.

B. WRED will start dropping packets from other queues.

C. Priority queue packets will be placed in the class-default queue.

D. WRED will start dropping packets from the priority queue.

Answer: A

16. Given the partial configuration, what function does the command dialer watch-group 8 have?

```
interface BRI0
ip address 172.20.10.2 255.255.255.0
encapsulation ppp
dialer idle-timeout 30
dialer watch-disable 15
dialer load-threshold 1 outbound
dialer map ip 172.20.10.1 name RouterB broadcast 5551111
dialer map ip 172.22.53.0 name RouterB broadcast 5551111
dialer watch-group 8
dialer-group 8
isdn switch-type basic-ni
isdn spid1 51255522220101 5552222
isdn spid2 51255522230101 5552223
ppp authentication chap
ppp multilink
!
dialer watch-list 8 ip 172.22.53.0 255.255.255.0
access-list 101 remark Define Interesting Traffic
access-list 101 deny ospf any any
access-list 101 permit ip any any
dialer-list 8 protocol ip list 101
```

- A. Any IP traffic, except OSPF traffic, will cause interface BRI0 to dial RouterB.
- B. When the watched route, 172.22.53.0/24, is removed from the routing table and there is no other valid route, dialer watch then initiates a call to RouterB.
- C. When the watched route, 172.22.53.0/24, is removed from the routing table, regardless of whether there is another valid route pointing to an interface other than interface BRI0, dialer watch initiates the call to RouterB.
- D. When the load threshold is met and any IP traffic, except OSPF traffic, is destined for 172.22.53.0/24 network, the dialer watch will initiate the call to RouterB.

Answer: B

17. What are three LCP options that are supported by PPP? (Choose three.)

- A. authentication
- B. multilink
- C. protocol multiplexing
- D. compression

- E. dynamic address allocation
- F. dynamic address translation

Answer: ABD

18. Which two features are enhancements that IKE provides for IPsec? (Choose two.)

- A. supports multicast traffic
- B. allows the changing of encryption keys during an IPsec session
- C. allows the SA to have a specified lifetime
- D. supports multiple protocols
- E. allows dynamic authentication of peers
- F. eliminates the need to manually specify all the IPsec security parameters in the crypto maps at both peers.

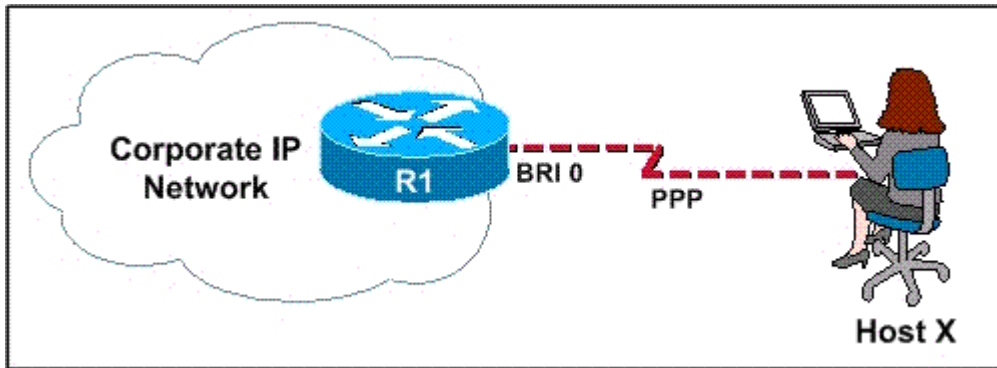
Answer: BC

19. Which router command specifies the RADIUS server that will authenticate dial-up clients?

- A. aaa radius server
- B. radius-server host
- C. ip aaa radius host
- D. aaa authentication radius-server

Answer: B

20. Refer to the diagram. Host X is unable to establish an ISDN connection with R1 using PPP. Which commands can be used on R1 to troubleshoot the LCP and NCP negotiation between these two hosts? (Choose two.)



- A. debug ppp negotiation
- B. debug ppp authentication
- C. debug dialer
- D. debug isdn q931
- E. debug isdn q921

Answer: AB