

IT 认证电子书



质 量 更 高 服 务 更 好

半年免费升级服务

<http://www.itrenzheng.com>

Exam : **9A0-063**

Title : Adobe Acrobat Professional
8.0 ACE Exam

Version : DEMO

1. Which information can you preview by Selecting Preview Separations from the Output Preview dialog box?

- A.Resolution
- B.Halftone screens
- C.Emulsion options
- D.One or more process plates

Answer: D

2. You are creating a PDF document from a Microsoft Word document. You want to automatically include the metadata from the Word document in the PDF document. Which option in the Acrobat PDFMaker dialog box should you select?

- A.Add Links to Adobe PDF
- B.Add Bookmarks to Adobe PDF
- C.Convert Document Information
- D.Prompt for Adobe PDF file name

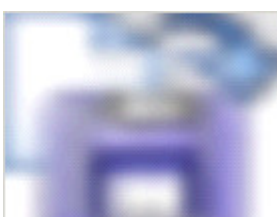
Answer: C

3. You want to use the Attachments panel to add an attachment to a PDF document. Which icon displays the Add Attachment dialog box?

A.



B.



C.



D.



Answer: D

4. You are using the Review Tracker to send out an email review. You have sent out the initial email.

Which two Review Tracker features are available? (Choose two.)

- A.Add Reviewers
- B.Import Comments
- C.Migrate Comments
- D.Email All Reviewers
- E.Summarize Comments

Answer: AD

5. Which statement about security envelopes is true?

- A.Only PDF files can be protected with a security envelope
- B.Security envelopes are only compatible with Acrobat 8 and Reader 8
- C.They contain the protected file as an attachment to the envelope PDF
- D.You can not use a policy server or Adobe Document Center policy with them

Answer: C

6. You want to collaboratively edit a PowerPoint presentation. Which method should you use?

- A.Conduct an e-mail-based review
- B.Send the PowerPoint slides in a PDF Package

- C.Attach the PowerPoint slides to a Shared Review
- D.Collaborate via the Web with Adobe Acrobat Connect

Answer: D

7. Which feature is enabled for a Participant in an Adobe Acrobat Connect session?

- A.Polling pods
- B.The Note pod
- C.Screen Sharing
- D.The Camera pod

Answer: D

8. What does right-clicking (Windows) or control-clicking (Mac OS) on a toolbar allow you to do?

- A.Undock and redock the toolbar
- B.Add or delete items from a toolbar
- C.Hide or show button labels on the toolbar
- D.Create or delete new tools with JavaScript

Answer: B

9. Which statement about toolbars is true?

- A.You can hide tools on a toolbar
- B.You can add any tool to any toolbar
- C.You can combine two toolbars together
- D.You can only dock default toolbars in the interface above the document window

Answer: A

10. You want to allow users to add a digital signature to your document by using Adobe Reader 8. Which command should you choose?

- A.Advanced > Security Settings
- B.Advanced > Sign & Certify > Place Signature
- C.Advanced > Enable Usage Rights in Adobe Reader

D.Advanced > Document Processing > Set Document Actions

Answer: C

11. You have saved a PDF document by using the Enable Usage Rights command Which two features are available when the file is opened in Adobe Reader? (Choose two.)

A.Saving form data

B.Applying a password to a PDF document

C.Using commenting and drawing mark-up tools

D.Applying restrictions for printing and copying the PDF document

E.Saving the PDF document as a Microsoft Word document, retaining the layout, fonts, formatting, and tables

Answer: AC

12. You want to export your PDF document to a file format that will retain the layout and allow you to edit the text. Which format should you choose?

A.TIFF

B.JPEG

C.XML 1.0

D.Word Document

Answer: D

13. You want to edit the text of a PDF document. Which command should you choose to convert the PDF document into a document that you can edit?

A.File > Export > XML 1.0

B.Document > Extract Pages

C.File > Export > Word Document

D.File > Save As and choose PostScript from the format list

Answer: C

14. You want to export all the images in a PDF document to separate JPEG files. Which command should you choose?

- A.File > Save As > JPEG
- B.Document > Extract Pages
- C.File > Export > Image > JPEG
- D.Advanced > Document Processing > Export All Images

Answer: D

15. You want to create a separate archive of all the images in your PDF document. Which command should you choose?

- A.Document > Extract Pages
- B.File > Export > Image > JPEG
- C.Tools > Advanced Editing > TouchUp Object Tool
- D.Advanced > Document Processing > Export All Images

Answer: D

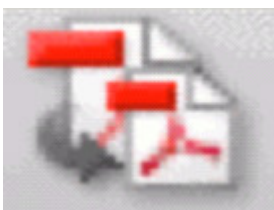
16. Which Print Production tool allows you to convert all of the spot colors in a document to process colors?

- A.Ink Manager
- B.Trap Presets
- C.PDF Optimizer
- D.Output Preview

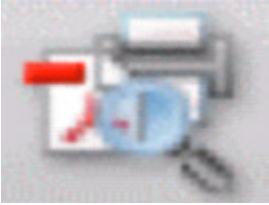
Answer: A

17. You want to examine and make corrections to your PDF document for common output problems, compatibility issues, and conformance to standards. Which should you choose?

A.



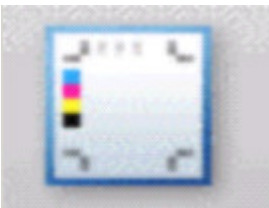
B.



C.



D.



Answer: B

18. Which tool on the Print Production toolbar can be accessed from the Output Preview dialog box?

- A. Ink Manager
- B. Crop Pages
- C. Trap Presets
- D. Add Printer Marks

Answer: A

19. What does Total Ink Coverage preview display?

- A. Spot colors that overlap process color areas
- B. The total percentage of a page covered by any ink
- C. The percentage of a process-color ink in a solid-color object
- D. Areas that exceed the maximum amount of ink coverage allowed by a printer

Answer: D

20. You want to use the Output Preview dialog box to show the areas of your document that have a total ink coverage of 280% or higher. Which should you choose?

A.Ink Manager

B.Simulate Black Ink

C.Total Area Coverage

D.Simulate Paper Color

Answer: C