

# IT 认证电子书



质 量 更 高 服 务 更 好

半年免费升级服务

<http://www.itrenzheng.com>

**Exam** : **HP0-K02**

**Title** : **Implementing HP  
BladeSystem**

**Version** : **DEMO**

1. Which function does the Onboard Administrator perform in the BladeSystem c-Class? (Select two.)

- A. configures and troubleshoots the server blade
- B. manages connections to the interconnect modules
- C. activates Remote Deployment Pack (RDP) when an in-service server fails
- D. automates the process of deploying server operating systems and software
- E. drives all management features through the Inter-Integrated Circuit (I2C) and Intelligent Chassis Management Bus (ICMB) interfaces

Answer: BE

2. Which options properly power down a c-Class blade server? (Select two.)

- A. Use the virtual power button selection through iLO2.
- B. Remove the c-Class blade server from the enclosure.
- C. Use the virtual power button selection through RILOE II.
- D. Switch off the power supplies on the back of the c7000 enclosure.
- E. Press and hold the Power On/Standby button for more than 4 seconds.

Answer: AE

3. What happens if you install extra fans in bays of a c7000 BladeSystem enclosure in such a way that they do not meet the next higher fan rule?

- A. The enclosure will shut down.
- B. The new fans will spin up and run at full speed.
- C. The red LED will start blinking on the new fans.
- D. The new fans will be marked with location errors.

Answer: D

4. Which LED indicator shows a fan failure?

- A. solid blue
- B. solid red
- C. solid green
- D. solid amber

Answer: D

5. What is the correct way of removing an active cool fan from a c-Class enclosure?

- A. Lift the handle upwards and pull the fan from the enclosure.
- B. Turn the handle on the fan counterclockwise and remove the fan.
- C. Remove the four screws securing the fan and lift it out of the enclosure.
- D. Remove the power connector from the fan and lift the fan out of the chassis.

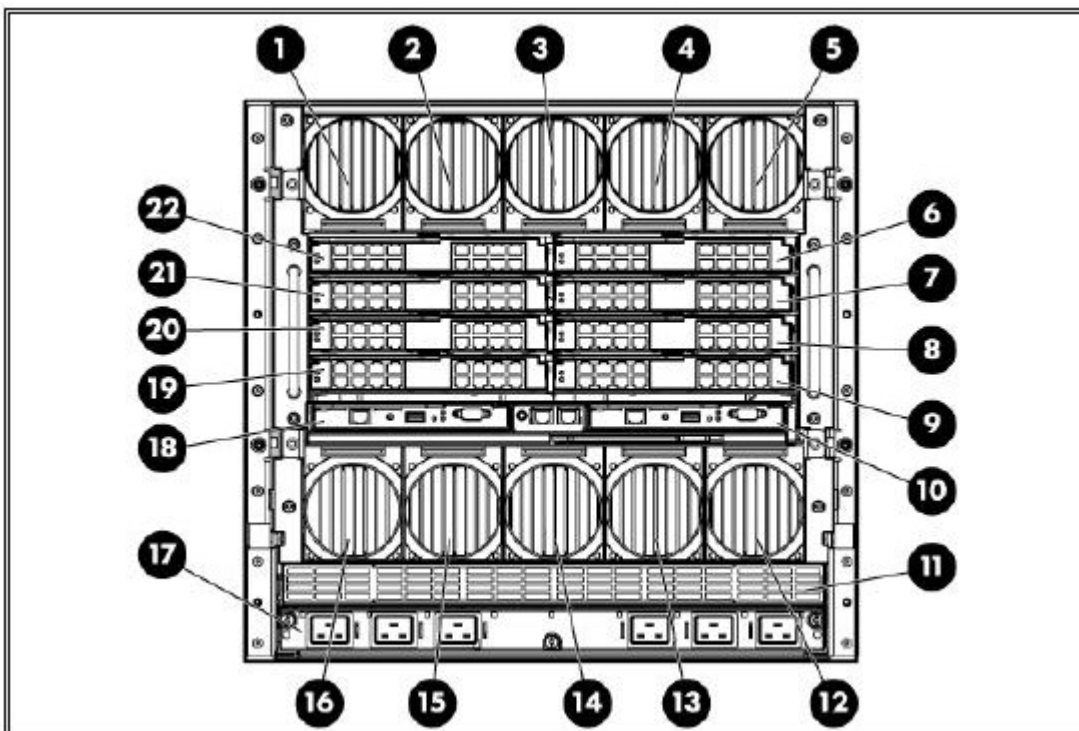
Answer: B

6. Which port on a BladeSystem c-Class enclosure serves as a service port for temporary connection to a PC?

- A. USB port
- B. serial port
- C. enclosure link-up port
- D. enclosure link-down port

Answer: C

7. Click the Exhibit button.



You want to enable direct FC SAN connectivity on a c7000 enclosure. Where must you install the primary

fabric switch?

- A. Position 6
- B. Position 18
- C. Position 21
- D. Position 22

Answer: C

8. Which features are available in Instant Support Enterprise Edition (ISEE) Advanced? (Select three.)

- A. monthly OS update and patch downloads
- B. real-time hardware event monitoring and automated notification to the HP 3rd level support
- C. event management and fault detection to enhance Support Point of Presence (SPOP) availability
- D. comprehensive enterprise view of open incidents, history, installed clients, client status, and contact information
- E. convenient central point of administration through an HP owned and maintained Support Point of Presence (SPOP) server installed at the customer site

Answer: CDE

9. Which HP service offering provides a two-hour response time for software issues and a four-hour response time for hardware issue resolution?

- A. Proactive 24
- B. HP Support Plus
- C. HP Support Plus 24
- D. Software Plus Support Service

Answer: A

10. What should a customer do before calling for service during the warranty period?

- A. Install the ISEE software to automatically log the event.
- B. Order a Care Pack online to have service on the same day.
- C. Download the maintenance and service guide for the server.
- D. Run diagnostics and install the latest firmware, drivers and patches.

Answer: D

11. Which hardware support services can be offered by HP Care Packs? (Select three.)

- A. 2nd-Day Service
- B. Pick-up and Return
- C. Next Day Exchange
- D. 2-Hour Call-to-Repair
- E. 6-Hour Call-to-Repair

Answer: BCE

12. Which option is valid when running the First Time Wizard in HP SIM?

- A. Configure email options in the Email options page.
- B. Configure access rights in the SNMP options page.
- C. Configure certificate security in the WBEM options page.
- D. Configure the discovery options page to select manageable routers.

Answer: A

13. What is the default TCP port used by the Rapid Deployment Pack for client/server file transfer?

- A. 21
- B. 80
- C. 403
- D. 4300

Answer: D

14. HP BladeSystem Integrated Manager provides a consolidated view of which components? (Select two.)

- A. NIC port interfaces
- B. interconnect switches
- C. server blade enclosures
- D. RAID configured memory

E. RAID configured hard drives

Answer: BC

15. Which ProLiant Essentials value pack is the primary replacement for Rapid Deployment Pack - Linux edition?

A. Insight Control Data Center Edition

B. ProLiant Essentials Server Migration Pack

C. HP Insight Control Linux Edition for HP BladeSystem

D. ProLiant Essentials Virtualization Management Software

Answer: C

16. Which details in HP BladeSystem Integrated Manager are shown only for c-Class enclosures? (Select three.)

A. Fan Redundancy

B. Onboard Administrator

C. Aggregate Event Status

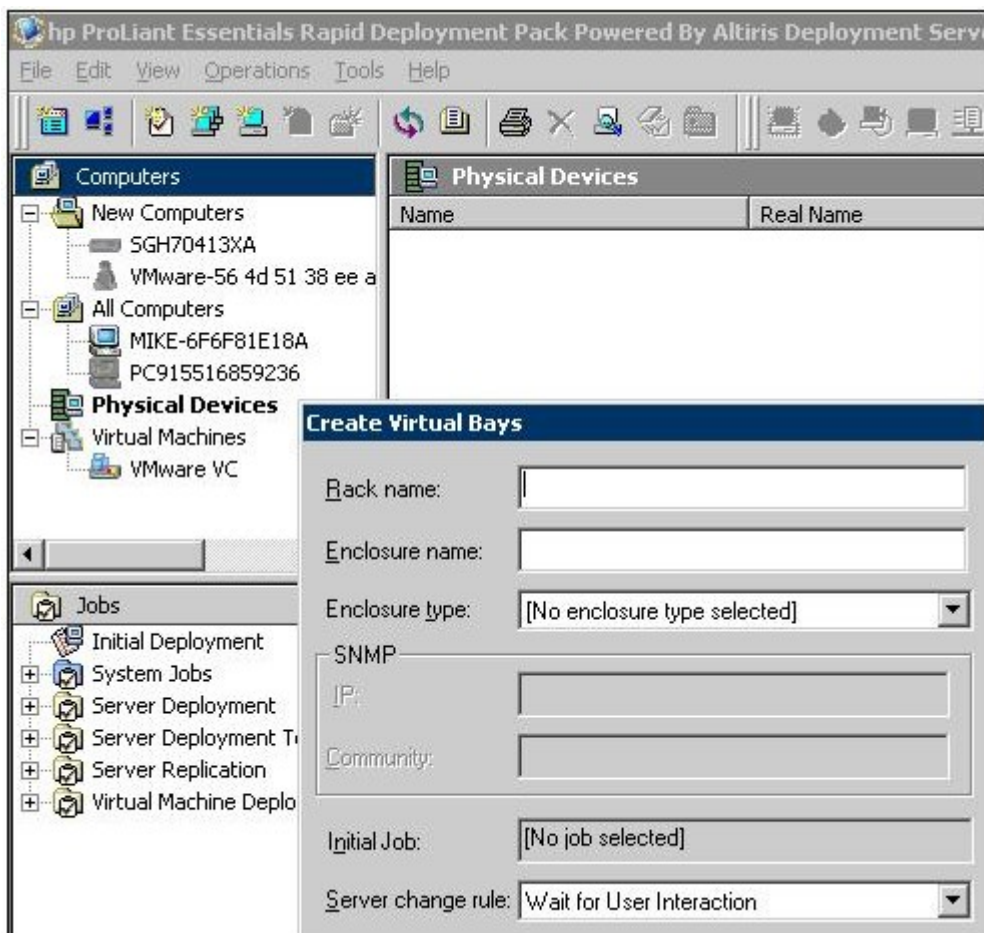
D. Virtual Connect Manager

E. Provisioning and Recovery Status

F. Current temperature of the enclosure

Answer: ABD

17. Click the Exhibit button.



Which type of information do you enter in the "Enclosure name" box?

- A. hardware MAC address of the Onboard Administrator network port
- B. name of each blade server module retrieved from the iLO 2 server homepage
- C. serial number of the primary Onboard Administrator of your c-Class enclosure
- D. exact name of your c-Class BladeSystem enclosure from Onboard Administrator or Insight Display

Answer: D

18. What are the components of Rapid Deployment Pack (RDP)? (Select three.)

- A. Altiris Deployment Solution
- B. ProLiant Integration Module
- C. virtual floppy and CD-ROM
- D. HP SmartStart Scripting Toolkit
- E. schema-free Active directory integration
- F. remote capability for administrative functions



Answer: ABD

19. Which HP SIM plug-ins require SSH? (Select four.)

- A. Server Migration Pack
- B. Insight Power Manager
- C. Rapid Deployment Pack
- D. Integrated Lights-Out Pack
- E. Open Service Event Manager
- F. Performance Management Pack
- G. Vulnerability & Patch Management
- H. BladeSystem Integrated Manager
- I. Integrated Lights-Out Advanced Pack

Answer: CEFG

20. Which HP product lowers the risk of security attacks on managed systems?

- A. Rapid Deployment Pack (RDP)
- B. Virtual Machine Manager (VMM)
- C. Workload Management Pack (WMP)
- D. Performance Management Pack (PMP)
- E. Vulnerability and Patch Management pack (VPM)

Answer: E