

# IT 认证电子书



质 量 更 高 服 务 更 好

半年免费升级服务

<http://www.itrenzheng.com>

**Exam** : **HP0-M35**

**Title** : Implementing HP TRIM 7.x  
Software

**Version** : Demo

1.Which HP TRIM function allows you to select the fields to "export" record metadata to a Word, Word Perfect, or tab-delimited file?

- A. TRIMPort
- B. Print Merge
- C. SuperCopy
- D. Copy

**Answer: B**

2.The Export function supports many different elements of information. Which objects can be exported.? (Select three.)

- A. locations
- B. record types
- C. electronic documents
- D. shortcut keys
- E. metadata
- F. document queues

**Answer: A,C,E**

3.Which action should you perform before importing data?

- A. update locations
- B. validate index
- C. back up datasets and document stores
- D. take dataset offline

**Answer: C**

4.What is the difference between the Check Out and Edit functions in HP TRIM?

- A. Check Out shows that a document is checked out to a user and shows the check out in the Assignee field; Edit allows you to edit an electronic document.
- B. Check Out provides document revision/replacement option during Check In; Edit automatically creates a revision with no user interaction.
- C. Check Out acts as a placeholder for a document and prevents other users from viewing it if it is checked out; Edit allows you to select the application that will be used to make changes in the document.
- D. Check Out cannot be used on a document; Edit allows you to change the metadata properties of a HP TRIM record.

**Answer: B**

5.How do you add activities to the Workflow template?

- A. Select Tools > Add Activity.
- B. Right-click, then select Add Activity.
- C. Select Edit > New Activity.
- D. Select File > New > Activity.

**Answer: B**

6.For what purpose would you use the Print Report function?

- A. to produce electronic documents
- B. to generate barcode labels
- C. to print workflows
- D. to create HTML documents

**Answer: B**

7. When creating a new document record for HP TRIM via Windows Explorer, the user should highlight the document, right-click and select what?

- A. Send to HP TRIM
- B. New to HP TRIM
- C. Open with HP TRIM
- D. Properties for HP TRIM

**Answer: A**

8. Once a record is authorized for destruction, how should you change the status from Active to Destroyed in HP TRIM?

- A. Locate the record, right-click and select Properties. In the Title field, add the word Destroyed before the title.
- B. Locate the record, right-click and select Administrative Tools > Retention. Click the Disposition tab and select the options to change disposition to Destroyed.
- C. Locate the record and change the Home Assignee Locations to Destroyed for the record container.
- D. Locate the record, right-click and select Record Type. Click on the record type that holds Destroyed records, and then click OK.

**Answer: B**

#### 9 HOTSPOT

Click the Task button. Click on the menu option you should select to administer a SharePoint document in HP TRIM, while allowing users to edit and use this document within SharePoint.

Point and click.

Click on the menu option you should select to administer a SharePoint document in HP TRIM, while allowing users to edit and use this document in SharePoint.

The screenshot shows the SharePoint Library Tools ribbon with the 'Library' tab selected. The 'HP TRIM' dropdown menu is open, displaying several options. The document 'Master Project Plan 0.2' is highlighted in the list below. The 'Done' button is visible at the bottom right of the ribbon.

Type	Name
Document	Business Requirements
Document	Conceptual Design
Document	Deployment Plan
Document	Development Plan
Document	Master Project Plan 0.2
Document	Microsoft Support Plan
Document	Migration Plan
Document	Operations Requirements
Document	Test Plan
Document	User Requirements

Library Tools

Documents Library

Open & Check Out

Check Out  
Check In  
Discard Check Out

View Properties  
Edit Properties

HP TRIM

Version History  
Document Permissions  
Delete Document

E-mail a Link

Manage with HP TRIM  
Manage selected item(s) using HP TRIM.

Finalize  
Finalize selected item(s) in HP TRIM.

Relocate to HP TRIM  
Relocate selected item(s) to HP TRIM.

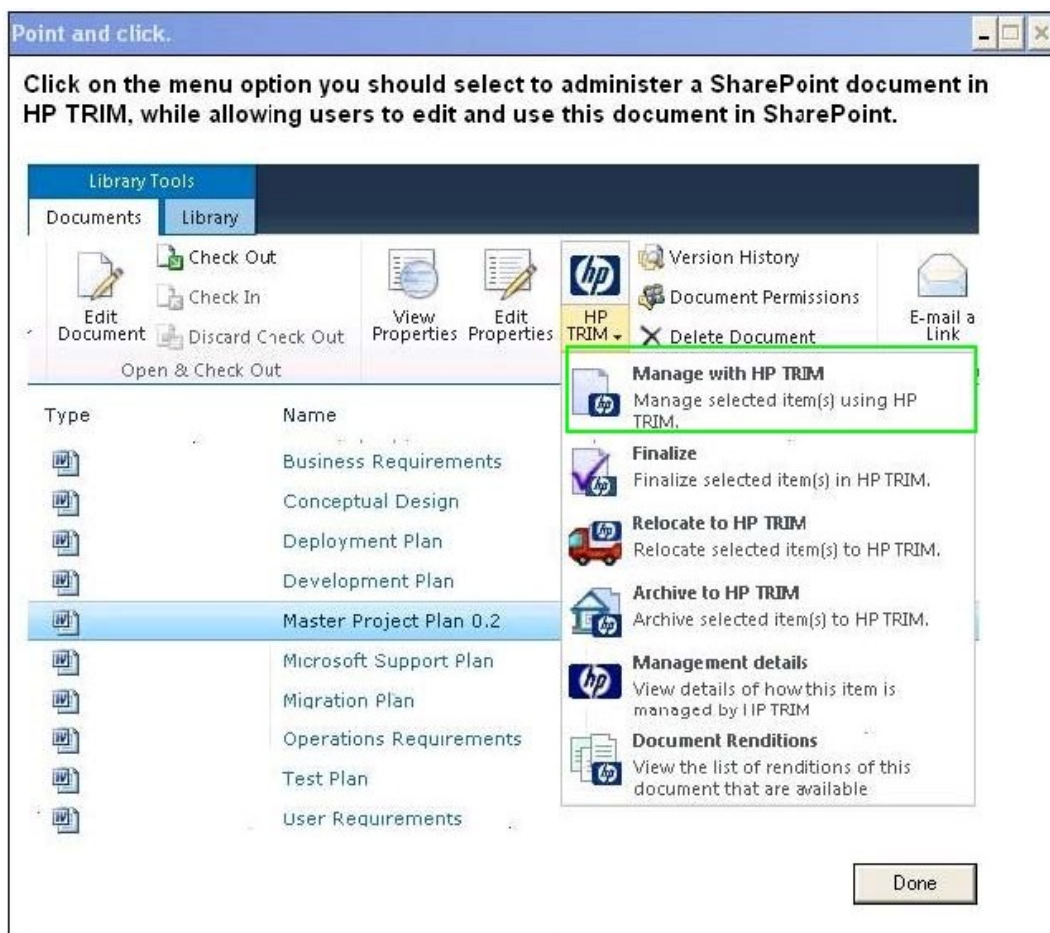
Archive to HP TRIM  
Archive selected item(s) to HP TRIM.

Management details  
View details of how this item is managed by HP TRIM

Document Renditions  
View the list of renditions of this document that are available

Done

Answer:



10. Users have the ability to perform a Record Request in HP TRIM, which places an electronic request in the Record Request screen, accessed by Tools > Record > Record Request. Other than manually deleting the Record Request, how is the Record Request removed from the Record Request screen?

- A. by double clicking on the Record Request to fulfill the Request
- B. by changing the record's assignee to the requestor's name
- C. by right-clicking on the record and selecting Locations > Request
- D. by changing the record's home location to the requestor's name

**Answer: B**