

IT 认证电子书



质 量 更 高 服 务 更 好

半年免费升级服务

<http://www.itrenzheng.com>

Exam : **PEGAPCRSA80V1_2019**

Title : Pega Certified Robotics
System Architect (PCRSA)
80V1 2019

Version : DEMO

1. Select two statements that correctly describe adapters. (Choose two.)

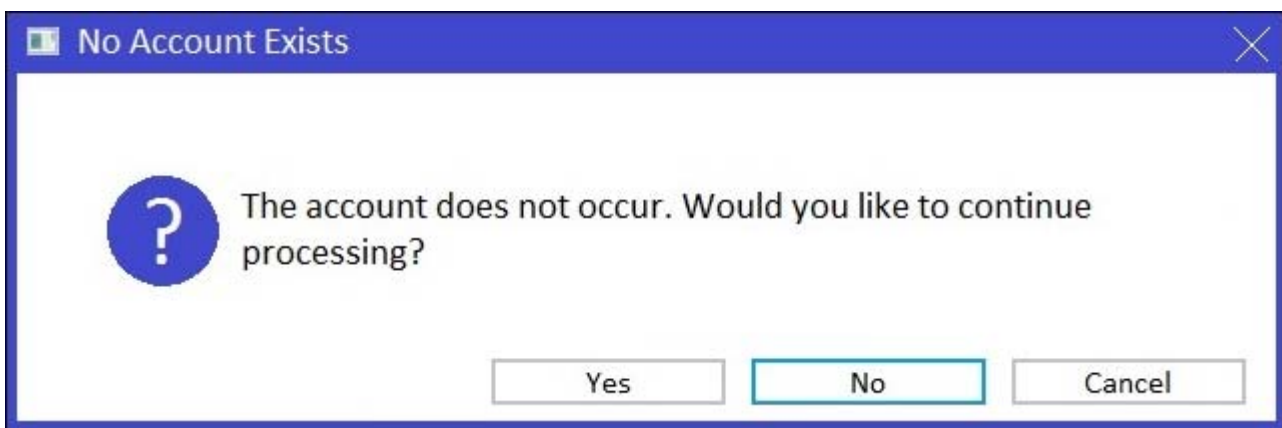
- A. Adapters have accessible properties, methods, and events that launch, monitor, and expose enterprise applications for automation.
- B. An adapter allows users to integrate with an application built on a specific platform.
- C. An adapter orchestrates the deployment of a robotic solution and monitors the robots of the robot worker pool.
- D. An adapter integrates with Windows applications by using a self-hosted REST service through application JavaScript.

Answer: AB

Explanation:

Reference: <https://community1.pega.com/community/product-support/question/adaptor-pega-robotics>

2. You add a MessageDialog component to an automation.



Based on the following image, which option shows the configuration settings that generates the message dialog?

A)

i messageDialog2
⌵

● Show
●

● *The account does not occur. ...*
●

● caption
●

⊞ Result
●

Appearance	
Buttons	YesNoCancel
Caption	
DefaultButton	Button2
Icon	Question
Behavior	
TopMost	True
Data	
Message	
Design	
(Name)	messageDialog2

B)

	<table border="1"> <tr><td colspan="2">[-] Appearance</td></tr> <tr><td>Buttons</td><td>YesNoCancel</td></tr> <tr><td>Caption</td><td></td></tr> <tr><td>DefaultButton</td><td>Button2</td></tr> <tr><td>Icon</td><td>Question</td></tr> <tr><td colspan="2">[-] Behavior</td></tr> <tr><td>TopMost</td><td>True</td></tr> <tr><td colspan="2">[-] Data</td></tr> <tr><td>Message</td><td></td></tr> <tr><td colspan="2">[-] Design</td></tr> <tr><td>(Name)</td><td>messageDialog2</td></tr> </table>	[-] Appearance		Buttons	YesNoCancel	Caption		DefaultButton	Button2	Icon	Question	[-] Behavior		TopMost	True	[-] Data		Message		[-] Design		(Name)	messageDialog2
[-] Appearance																							
Buttons	YesNoCancel																						
Caption																							
DefaultButton	Button2																						
Icon	Question																						
[-] Behavior																							
TopMost	True																						
[-] Data																							
Message																							
[-] Design																							
(Name)	messageDialog2																						

C)

	<table border="1"> <tr><td colspan="2">[-] Appearance</td></tr> <tr><td>Buttons</td><td>YesNoCancel</td></tr> <tr><td>Caption</td><td></td></tr> <tr><td>DefaultButton</td><td>Button2</td></tr> <tr><td>Icon</td><td>None</td></tr> <tr><td colspan="2">[-] Behavior</td></tr> <tr><td>TopMost</td><td>True</td></tr> <tr><td colspan="2">[-] Data</td></tr> <tr><td>Message</td><td></td></tr> <tr><td colspan="2">[-] Design</td></tr> <tr><td>(Name)</td><td>messageDialog2</td></tr> </table>	[-] Appearance		Buttons	YesNoCancel	Caption		DefaultButton	Button2	Icon	None	[-] Behavior		TopMost	True	[-] Data		Message		[-] Design		(Name)	messageDialog2
[-] Appearance																							
Buttons	YesNoCancel																						
Caption																							
DefaultButton	Button2																						
Icon	None																						
[-] Behavior																							
TopMost	True																						
[-] Data																							
Message																							
[-] Design																							
(Name)	messageDialog2																						

D)

	<table border="1"> <tr><td colspan="2">[-] Appearance</td></tr> <tr><td>Buttons</td><td>YesNoCancel</td></tr> <tr><td>Caption</td><td></td></tr> <tr><td>DefaultButton</td><td>Button1</td></tr> <tr><td>Icon</td><td>Question</td></tr> <tr><td colspan="2">[-] Behavior</td></tr> <tr><td>TopMost</td><td>True</td></tr> <tr><td colspan="2">[-] Data</td></tr> <tr><td>Message</td><td></td></tr> <tr><td colspan="2">[-] Design</td></tr> <tr><td>(Name)</td><td>messageDialog2</td></tr> </table>	[-] Appearance		Buttons	YesNoCancel	Caption		DefaultButton	Button1	Icon	Question	[-] Behavior		TopMost	True	[-] Data		Message		[-] Design		(Name)	messageDialog2
[-] Appearance																							
Buttons	YesNoCancel																						
Caption																							
DefaultButton	Button1																						
Icon	Question																						
[-] Behavior																							
TopMost	True																						
[-] Data																							
Message																							
[-] Design																							
(Name)	messageDialog2																						

- A. Option A
- B. Option B
- C. Option C
- D. Option D

Answer: D

3.You are designing an automation that adds new customers to an online insurance web site. If a customer exists, a pop-up window is displayed with an error message, which closes automatically after 35 seconds.

While debugging the automation, you notice that you are receiving a control not created exception message in the Add Customer procedure after a page navigation occurs.

How do you resolve the exception?

- A. Add a missing created event in the Add Customer procedure.
- B. Ensure the waitForCreate timeout is longer than 35 seconds in the Add Customer procedure.
- C. Ensure the isCreated timeout is longer than 35 seconds in the Add Customer procedure.
- D. Add a missing waitForEvent.Exists method in the Add Customer procedure.

Answer: D

4.Pega Robotic Coding Standards suggest organization of project components. You have added the _GC_CRM project item to the CRMPj.

Which three components are recommended to be placed in the _GC_CRM project item? (Choose three.)

- A. ForLoop
- B. Switch
- C. stringUtils
- D. messageDialog
- E. dateTimeUtils

Answer: CDE

5.Which of the following controls cannot be added to the Windows form?

- A. ComboBox
- B. ProgressBar
- C. Pointer
- D. PictureBox

Answer: C