

IT 认证电子书



质 量 更 高 服 务 更 好

半年免费升级服务

<http://www.itrenzheng.com>

Exam : **VCP-510**

Title : VMware Certified
Professional on VSphere 5

Version : Demo

1.Which VMware solution uses the security of a vSphere implementation and provides linked-clone technology to virtual desktops?

- A. VMware ACE
- B. VMware View
- C. VMware Workstation
- D. VMware ThinApp

Answer: B

Explanation:

Reference: <http://www.vmware.com/files/pdf/VMware-View-4-Composer-DS-EN.pdf> (page 1, last paragraph)

2.An administrator has recently upgraded their Update Manager infrastructure to vSphere 5.x. Several hosts and virtual machines have not been upgraded yet.

Which vSphere component when upgraded will have the least impact to the existing environment?

- A. Virtual Machine Hardware
- B. ESX Hosts
- C. VMFS datastores
- D. VMware Tools

Answer: D

3.An administrator is using Update Manager 5.x to update virtual appliances in a vSphere environment. The environment is using the vCenter Server Virtual Appliance (vCSA).

What would cause the remediation to fail?

- A. Updating of the appliance can only be done if the vCenter Server Virtual Appliance (vCSA) has been put into Maintenance Mode.
- B. Remediation must be configured on the Appliance Administration page before use.
- C. Remediation of the vCenter Server Virtual Appliance (vCSA) with Update Manager is not supported.
- D. Remediation requires the hosts to be connected to vCenter using an IPv4 address.

Answer: D

4.An administrator is working to update the hosts and virtual machines in a vSphere 5.x deployment using Update Manager Baselines.

Other than host patches, which three items require a separate procedure or process to update? (Choose three.)

- A. Operating system patches
- B. Virtual Appliance updates
- C. Virtual Machine Virtual Hardware upgrades
- D. VMware Tools on machines without VMware Tools already installed
- E. Application patches within the virtual machine

Answer: A,D,E

5.A series of Auto Deploy ESXi 5.x hosts which utilize vSphere Standard Switches are unable to boot. In prior testing, all of the hosts were able to boot successfully.

Which two conditions might cause this issue? (Choose two.)

- A. The Hosts are unable to connect to the SAN.
- B. The TFTP server is down.
- C. The DNS server is down.
- D. The DHCP server is down.

Answer: B,D

6.An administrator wants to monitor the health status of an ESXi 5.x host. However, when the administrator clicks the Hardware Status tab the following error is displayed. This program cannot display the webpage

What might cause this problem?

- A. The VMware VirtualCenter Management Webservices Service is not started.
- B. The required plug-in is not enabled.
- C. The VMware ESXi Management Webservices Service is not started
- D. The name of the vCenter Server system could not be resolved.

Answer: A

7.An administrator would like to have vCenter take action any time a virtual machine is using over 90% of its available resources for five minutes or longer.

Which three actions can be taken by vCenter Server in response to the trigger without running a script? (Choose three.)

- A. Power on a VM
- B. Reboot Guest on VM
- C. Increase Virtual Machine Memory
- D. Migrate a VM
- E. Increase Virtual Machine CPU Shares

Answer: A,B,D

8.An administrator has purchased a new 10GB Converged Network Adapter (CNA) for installation in a system that is running ESXi 5.x. The administrator has downloaded the latest driver from the hardware vendor and wants to include the driver in an image. The image profile acceptance level is set to VMwareSupported. The acceptance level of the driver is VMwareSupported.

Which two statements are true about the inclusion of this driver in the image? (Choose two.)

- A. Support calls for the driver will be directed to the partner.
- B. The image can be built, but the driver will not be included in the image.
- C. The image can be built and the driver will be included.
- D. Support calls for the driver will be handled by VMware.

Answer: A,C

Explanation:

9.What are the three service offerings provided by a VMware-powered public cloud? (Choose three.)

- A. Committed
- B. Transient
- C. Dedicated
- D. Highly Elastic

E. Basic

Answer: A,C,E

10.An administrator has been tasked with upgrading an existing host from ESX 4.1 to ESXi 5.x. The existing host has only vSwitch0 with all the default settings.

The upgraded host will have the following new requirements.

1. 116 virtual machines will be connected.
2. Four uplinks configured for port-based load balancing.
3. The switch will include a secondary heartbeat network for HA.

Which two statements are true about this configuration? (Choose two.)

- A. The Service Console Port will be removed during the upgrade
- B. The configuration requires only one VMkernel Port
- C. The default vSwitch0 is sufficient for this configuration
- D. A change to vSwitch0 Properties is required

Answer: A,D

11.When would a license server be configured for vCenter Server 5.x?

- A. When managing ESX 3.x servers
- B. When the vCenter Server Virtual Appliance (vCSA) is used
- C. Within the first 60 days
- D. A standalone license server is installed by default

Answer: A

12.What two Advanced IP Allocation Schemes are available? (Choose two.)

- A. Fixed
- B. DHCP
- C. OVF Environment
- D. Transient

Answer: B,C

13.A company is planning an upgrade from vSphere 4.x to vSphere 5. They currently have three dual CPU servers licensed for ESXi 4.1 Advanced

Each server has 256GB of RAM installed.

Their virtual machines are sized three ways.

Light. 1v CPU, 4GB RAM

Medium. 2v CPU, 8GB RAM

Heavy. 4 vCPU, 12GB RAM

The Production workload consists of.

20 Light servers

20 Medium servers

2 Heavy servers

The Development workload consists of.

10 Light servers

10 Medium servers

How will vSphere 5 licensing impact their upgrade? (Choose two.)

- A. They will need to purchase additional ESXi licenses.
- B. They will be able to reduce their power consumption.
- C. They will be restricted from powering on additional virtual machines.
- D. A license upgrade will be needed to add vCPUs to the Heavy servers.

Answer: B,C

14.What is a benefit of vCenter Linked-Mode?

- A. Allows the vCenter Server Virtual Appliance (vCSA) to manage multiple sites
- B. Pools vRAM entitlement
- C. Increases vCenter security
- D. Increases vCenter reliability

Answer: B

15.What virtual machine action listed below can be performed on a template?

- A. Power on
- B. Clone
- C. Edit Settings
- D. Migrate

Answer: B

16.Which functions can be performed with the Plug-in Manager? (Choose two.)

- A. Enable an installed plug-in
- B. Remove permissions for a plug-in
- C. View the status of installed plug-ins
- D. Uninstall a plug-in

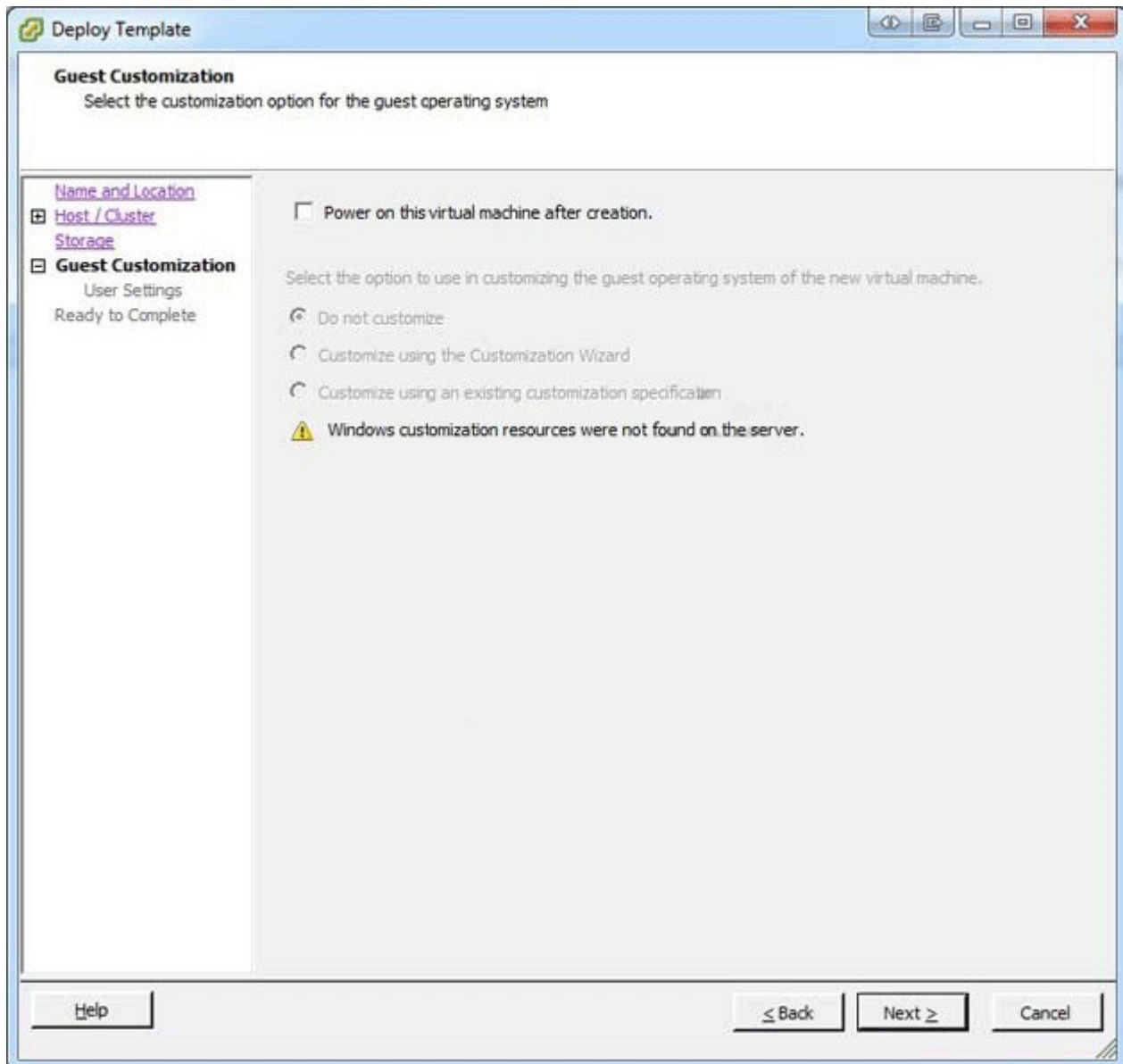
Answer: A,C

17.An administrator plans to deploy ESXi 5.x, but does not want to use CD or DVD media.
What are two alternate ways to provide the ESXi 5.x installation script to the host? (Choose two.)

- A. PXE
- B. FTP
- C. HTTP
- D. IPMI

Answer: B,C

18.Click the Exhibit button.



An administrator has implemented a new vSphere 5 environment and is deploying their first Windows 2008 R2 template. When running the Deploy Template wizard, the error shown in the exhibit appears. What can be done to correct the problem?

- A. Select the correct guest OS setting for the virtual machine.
- B. Windows 2003 x64 cannot be customized.
- C. Download and install the Microsoft Sysprep tool into the virtual machine to be customized.
- D. Download the Microsoft Sysprep tool to the appropriate vCenter Server directory.

Answer: A

Explanation:

<http://communities.vmware.com/thread/45830>

See also the table at:

http://kb.vmware.com/selfservice/microsites/search.do?language=en_US&cmd=displayKC&externalId=1005593 sysprep is not applicable for Windows vista/2008/7

19. What is a valid example of a vSphere Update Manager upgrade?

- A. A VMware Tools upgrade on a Fault Tolerant machine with automatic snapshots.
- B. Upgrading and patching multiple ESXi hosts simultaneously in a selected cluster.
- C. Upgrading an ESX 4.1 host to ESXi 5.x with a sufficient boot partition.
- D. An ESXi 5.x host update with automatically deleted snapshots.

Answer: C

20. Which three tasks can be selected from the home page of an ESXi 5.x host? (Choose three.)

- A. Browse objects managed by the host
- B. Browse NFS mounts for this host
- C. Download VMware vCenter or the vSphere client from vmware.com
- D. Shutdown or restart the host
- E. Download the PowerCLI installer

Answer: A,B,C